

**Name: anti-RANGAP1 mouse monoclonal antibody, clone OT1B4 (formerly 1B4)****Catalog: TA501265****Product Data Sheet - TRUEMAB**

<b>Components:</b>	<ul style="list-style-type: none"><li>• anti-RANGAP1 mouse monoclonal antibody, clone OT1B4 (formerly 1B4) (TA501265)</li><li>• WB positive control also available: 20ug myc-DDK tagged RANGAP1 HEK293T over-expression lysate lyophilized in RIPA buffer (LC401016). (Reconstitute into 20ul of 1x SDS sample buffer before loading; load 5ul per lane as WB control or as desired)</li></ul>
<b>Amount:</b>	100ul
<b>Immunogen:</b>	Full length human recombinant protein of human RANGAP1 (NP_002874) produced in HEK293T cell.
<b>Host:</b>	Mouse
<b>Isotype:</b>	IgG2a
<b>Species Reactivity:</b>	Human , Dog , Rat
<b>Guaranteed Applications:</b>	WB, IHC, IF, FC
<b>Suggested Dilutions:</b>	WB 1:1000~2000, IHC 1:50, IF 1:100, FLOW 1:100
<b>Concentration:</b>	0.81 mg/ml
<b>Buffer:</b>	PBS (pH 7.3) containing 1% BSA, 50% glycerol and 0.02% sodium azide.
<b>Purification:</b>	Purified from mouse ascites fluids by affinity chromatography
<b>Storage Condition:</b>	Shipped at -20C or with ice packs. Upon delivery store at -20C. Dilute in PBS (pH7.3) if necessary. Stable for 12 months from date of receipt. Avoid repeated freeze-thaws.

## Target

<b>Target Name:</b>	Homo sapiens Ran GTPase activating protein 1 (RANGAP1), transcript variant 2
<b>Alternative Name:</b>	Fug1; RANGAP; SD
<b>Database Link:</b>	<a href="#">NP_002874</a> <a href="#">Entrez Gene 5905 Human</a> <a href="#">Entrez Gene 362965 Rat</a> <a href="#">Entrez Gene 481234 Dog</a>
<b>Function:</b>	RanGAP1, is a homodimeric 65-kD polypeptide that specifically induces the GTPase activity of RAN, but not of RAS by over 1,000-fold. RanGAP1 is the immediate antagonist of RCC1, a regulator molecule that keeps RAN in the active, GTP-bound state. The RANGAP1 gene encodes a 587-amino acid polypeptide.

***This product is to be used for laboratory only. Not for diagnostic or therapeutic use.***

The sequence is unrelated to that of GTPase activators for other RAS-related proteins, but is 88% identical to Fug1, the murine homolog of yeast Rna1p. RanGAP1 and RCC1 control RAN-dependent transport between the nucleus and cytoplasm. RanGAP1 is a key regulator of the RAN GTP/GDP cycle. [provided by RefSeq]

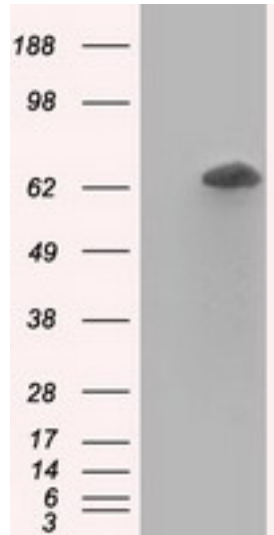
---

***This product is to be used for laboratory only. Not for diagnostic or therapeutic use.***

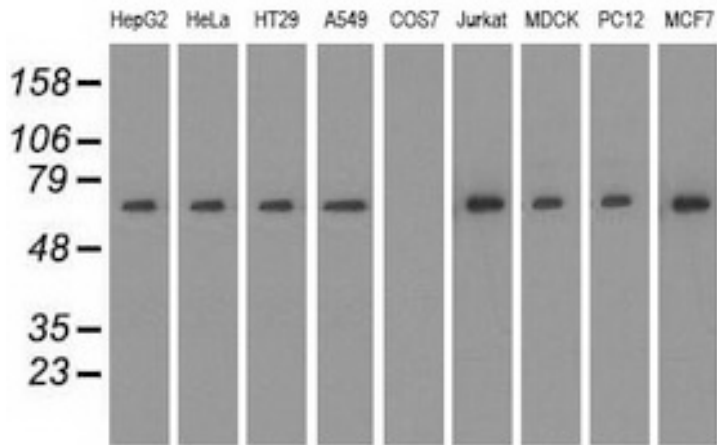
© 2017 OriGene Technologies, Inc. 9620 Medical Center Dr., Suite 200, Rockville, MD 20850

---

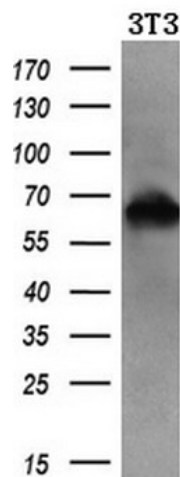
## Validation Data



HEK293T cells were transfected with the pCMV6-ENTRY control (Left lane) or pCMV6-ENTRY RANGAP1 (RC204223, Right lane) cDNA for 48 hrs and lysed. Equivalent amounts of cell lysates (5 ug per lane) were separated by SDS-PAGE and immunoblotted with anti-RANGAP1.



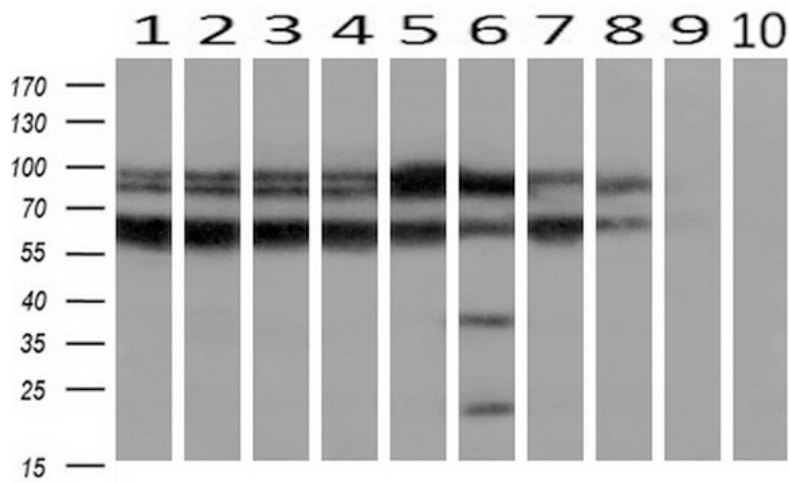
Western blot analysis of extracts (35ug) from 9 different cell lines by using anti-RANGAP1 monoclonal antibody.



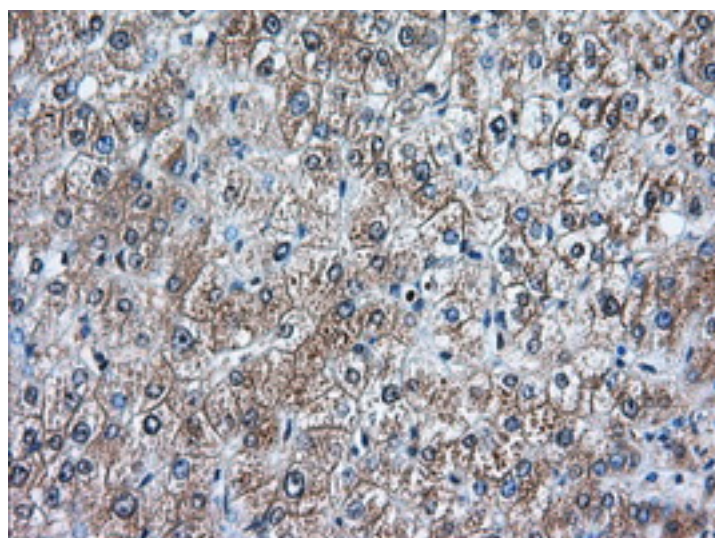
Western blot analysis of extracts (10ug) from a mouse cell line by using anti-RANGAP1 monoclonal antibody.(1:200)

***This product is to be used for laboratory only. Not for diagnostic or therapeutic use.***

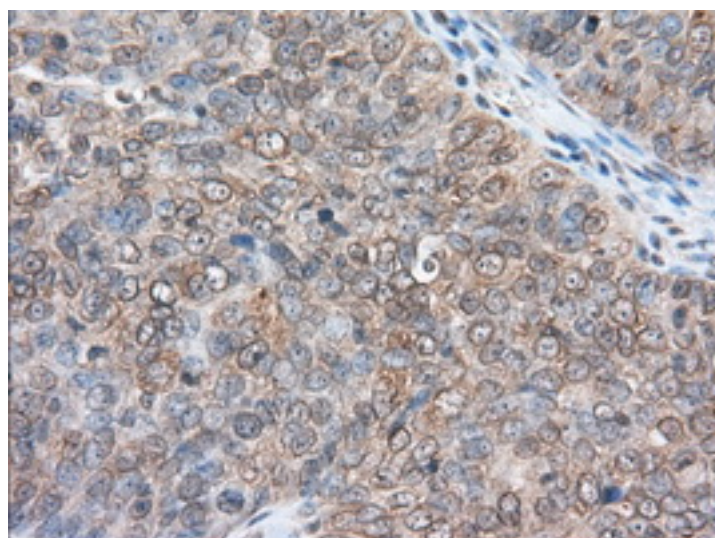
© 2017 OriGene Technologies, Inc. 9620 Medical Center Dr., Suite 200, Rockville, MD 20850



Western blot analysis of extracts (10ug) from 10 Human tissue by using anti-RANGAP1 monoclonal antibody at 1:200 (1: Testis; 2: Omentum; 3: Uterus; 4: Breast; 5: Brain; 6: Liver; 7: Ovary; 8: Thyroid gland; 9: colon; 10: spleen).



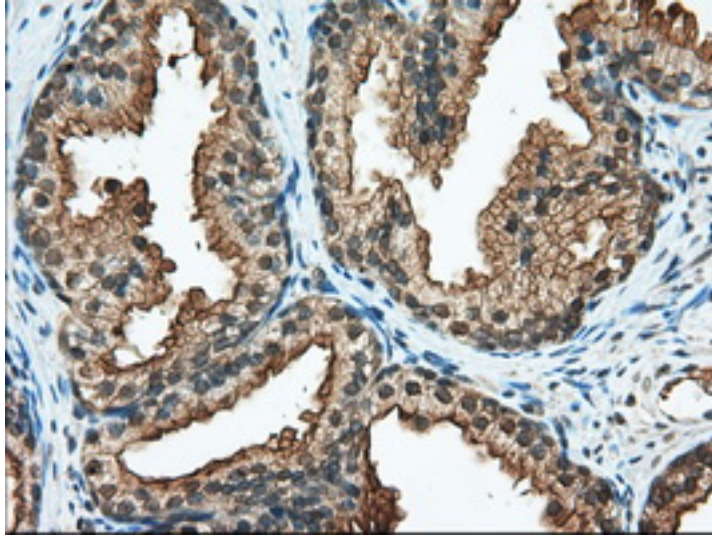
Immunohistochemical staining of paraffin-embedded Human liver tissue within the normal limits using anti-RANGAP1 mouse monoclonal antibody. (Heat-induced epitope retrieval by 10mM citric buffer, pH6.0, 100C for 10min, TA501265, Dilution 1:50)



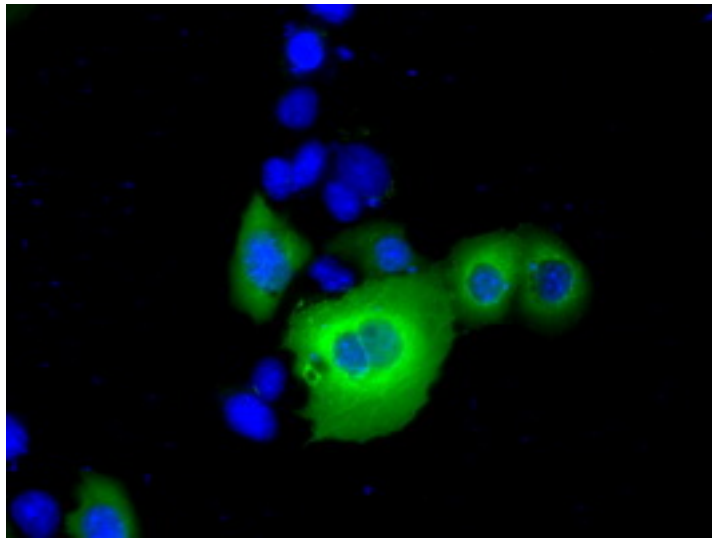
Immunohistochemical staining of paraffin-embedded Adenocarcinoma of Human ovary tissue using anti-RANGAP1 mouse monoclonal antibody. (Heat-induced epitope retrieval by 10mM citric buffer, pH6.0, 100C for 10min, TA501265, Dilution 1:50)

***This product is to be used for laboratory only. Not for diagnostic or therapeutic use.***

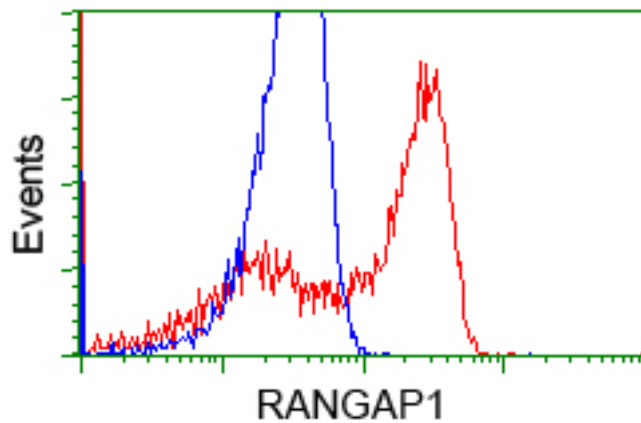
© 2017 OriGene Technologies, Inc. 9620 Medical Center Dr., Suite 200, Rockville, MD 20850



Immunohistochemical staining of paraffin-embedded Human prostate tissue within the normal limits using anti-RANGAP1 mouse monoclonal antibody. (Heat-induced epitope retrieval by 10mM citric buffer, pH6.0, 100C for 10min, TA501265, Dilution 1:50)



Anti-RANGAP1 mouse monoclonal antibody (TA501265) immunofluorescent staining of COS7 cells transiently transfected by pCMV6-ENTRY RANGAP1(RC204223).

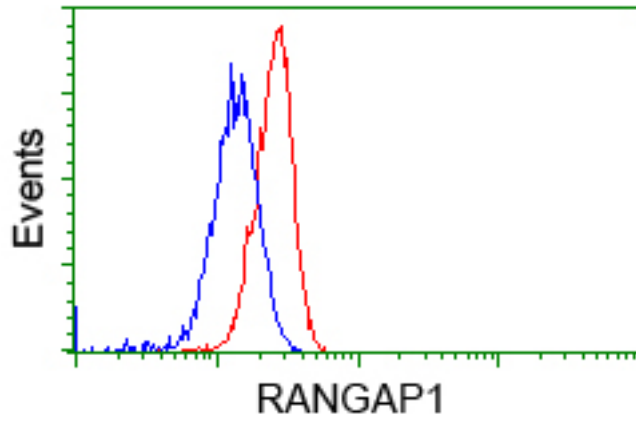


HEK293T cells transfected with either RC204223 overexpress plasmid(Red) or empty vector control plasmid(Blue) were immunostained by anti-RANGAP1 antibody(TA501265), and then analyzed by flow cytometry.

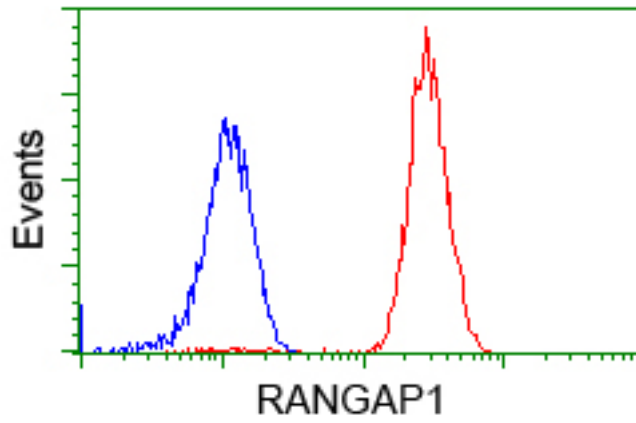
Flow cytometric Analysis of HeLa cells, using anti-RANGAP1 antibody(TA501265),(Red), compared to a

***This product is to be used for laboratory only. Not for diagnostic or therapeutic use.***

© 2017 OriGene Technologies, Inc. 9620 Medical Center Dr., Suite 200, Rockville, MD 20850



nonspecific negative control antibody(TA50011),(Blue).



Flow cytometric Analysis of Jurkat cells, using anti-RANGAP1 antibody(TA501265),(Red), compared to a nonspecific negative control antibody(TA50011),(Blue).

\* More validation images may be available on our website: <http://www.origene.com/antibody/TA501265.aspx>

***This product is to be used for laboratory only. Not for diagnostic or therapeutic use.***

© 2017 OriGene Technologies, Inc. 9620 Medical Center Dr., Suite 200, Rockville, MD 20850