



Goat (polyclonal) Anti-Human Amyloid Precursor Protein C-Terminal Peptide Antiserum

PRODUCT ANALYSIS SHEET

Catalog Number:	AHB0131
Lot Number:	See product label
Quantity/Volume:	100 µL
Form of Antibody:	Processed whole goat serum
Preservation:	0.1% sodium azide (Caution: sodium azide is a poisonous and hazardous substance. Handle with care and dispose of properly.)
Immunogen:	A synthetic peptide corresponding to aa sequence 681-695 (681GYENPTYKFFEQMQN ₆₉₅) of the C-terminus of human Amyloid Precursor Protein.
Target:	This antibody recognizes the C-terminus of the Amyloid Precursor Protein (APP), a protein with M _r =100 kDa. The smaller APP C-terminal fragment β (CTFβ; ~8 kDa) is rapidly degraded and not detected by Western blot analysis of brain cell lysates. The APP is a large transmembrane protein which is constitutively expressed by many cell types. Within the Golgi apparatus and endosome, APP is oriented such that its N-terminus is within the lumen while the C-terminus extends into the cytoplasm. Cleavage of APP by β-secretase (BACE) generates the N-terminus of the β amyloid peptide within C99, the C-terminal fragment. Further cleavage by γ-secretase yields the β amyloid peptide. β amyloid is released into the extracellular space. This antibody may cross-react with Amyloid Precursor-Like Protein2 (APLP2). This antiserum can routinely be used without further purification.
Species Reactivity:	Human. Other species were not tested.
Applications:	This antiserum is suitable for use in ELISA and Western blot analysis.
Suggested Working Dilutions:	For ELISA, a dilution of ≥ 1:25,000 is recommended. For Western blots, a dilution of ≥ 1:5,000 is recommended. The optimal concentration should be determined for each specific application.
Recommended Positive Control:	Neuronal cell lysate.
Storage:	Store at 2-8°C. For long term storage, apportion into working aliquots and store at -20°C. Avoid repeated freeze-thaw cycles to prevent denaturing the antibody.
Expiration Date:	Expires one year from date of receipt when stored as instructed.
References:	Selkoe, D. J., <i>et al.</i> (1988) β-Amyloid precursor protein of Alzheimer's disease occurs as 110 to 135 kD membrane-associated proteins in neural and nonneural tissues. Proc. Nat'l. Acad. Sci. USA 85:7341-7345.

This product is for research use only. Not for use in diagnostic procedures.

www.invitrogen.com

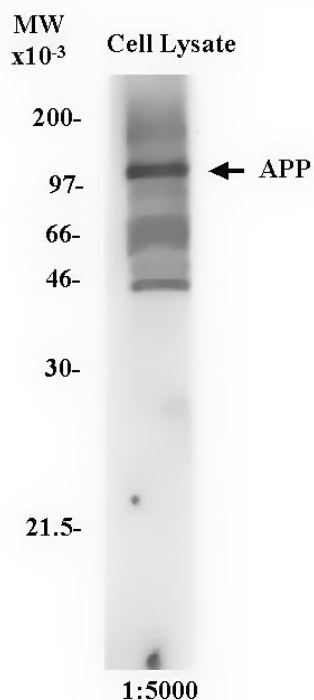
Invitrogen Corporation • 542 Flynn Rd • Camarillo • CA 93012 • Tel: 800.955.6288 • E-mail: techsupport@invitrogen.com

PI AHB0131

(Rev 10/08) DCC-08-1089

Important Licensing Information - These products may be covered by one or more Limited Use Label Licenses (see the Invitrogen Catalog or our website, www.invitrogen.com). By use of these products you accept the terms and conditions of all applicable Limited Use Label Licenses. Unless otherwise indicated, these products are for research use only and are not intended for human or animal diagnostic, therapeutic or commercial use.

APP C-terminal Antiserum



Western blot of neuronal cell lysate using Amyloid Precursor Protein C-terminal antiserum at 1:5,000 dilution.

This product is for research use only. Not for use in diagnostic procedures.

www.invitrogen.com

Invitrogen Corporation • 542 Flynn Rd • Camarillo • CA 93012 • Tel: 800.955.6288 • E-mail: techsupport@invitrogen.com

PI AHB0131

(Rev 10/08) DCC-08-1089

Important Licensing Information - These products may be covered by one or more Limited Use Label Licenses (see the Invitrogen Catalog or our website, www.invitrogen.com). By use of these products you accept the terms and conditions of all applicable Limited Use Label Licenses. Unless otherwise indicated, these products are for research use only and are not intended for human or animal diagnostic, therapeutic or commercial use.