



**Rabbit (polyclonal)
Anti-ZAP-70 [pYpY^{315/319}]
Phosphospecific Antibody, Unconjugated**

PRODUCT ANALYSIS SHEET

Catalog Number:	44-232G (10 mini-blot size)
Volume:	100 μ L
Form of Antibody:	Rabbit polyclonal immunoglobulin in Dulbecco's phosphate buffered saline (without Mg ²⁺ and Ca ²⁺), pH 7.3 (+/- 0.1), 50% glycerol, with 1.0 mg/mL BSA (IgG, protease free) as a carrier.
Preservative:	0.05% sodium azide (Caution: sodium azide is a poisonous and hazardous substance. Handle with care and dispose of properly.)
Purification:	Purified from rabbit serum by sequential epitope-specific chromatography. The antibody has been negatively preadsorbed using a non-phosphopeptide corresponding to the site of phosphorylation to remove antibody that is reactive with non-phosphorylated ZAP-70. The final product is generated by affinity chromatography using a ZAP-70-derived peptide that is phosphorylated at tyrosines 315 and 319.
Immunogen:	The antiserum was produced against a chemically synthesized phosphopeptide derived from the region of human ZAP-70 that contains tyrosines 315 and 319. The sequence is conserved in mouse.
Target Summary:	Zeta-associated protein (ZAP-70), a 70 kDa member of the Syk tyrosine kinase family, plays a central role in lymphocyte activation and development, and is implicated in several immune disorders. Upon T-cell antigen receptor (TCR) engagement, ZAP-70 is phosphorylated on tyrosines 292, 315 and 319 in the interdomain B, located between the SH2 and kinase domains. Phosphorylation of both tyrosines 315 (a Vav-binding site) and 319 (a Lck binding site) enhances ZAP-70 function in mediating lymphocyte signaling, while tyrosine 292 terminates the transient activation of ZAP-70 and attenuates lymphocyte signaling. Phosphorylation of tyrosines 315 and 319 plays an important role in mediating the positive and negative selection of T cells in thymus.
Reactivity:	Human ZAP-70. Mouse ZAP-70 (100% homologous) has not been tested, but is expected to react. Syk (85% homologous) may cross react in some cell systems.
Applications:	The antibody has been used for Western blotting applications.
Suggested Working Dilutions:	For Western blotting applications, we recommend using the antibody at a 1:1000 dilution. The optimal antibody concentration should be determined empirically for each specific application.
Storage:	Store at -20°C . We recommend a brief centrifugation before opening to settle vial contents. Then, apportion into working aliquots and store at -20°C . For shipment or short-term storage (up to one week), $2-8^{\circ}\text{C}$ is sufficient.
Expiration Date:	Expires one year from date of receipt when stored as instructed.
Positive Control Used:	Jurkat cells treated with H ₂ O ₂ .

This product is for research use only. Not for use in diagnostic procedures.

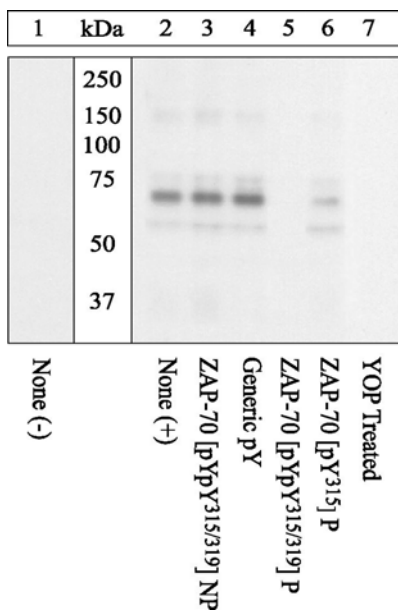
www.invitrogen.com

Invitrogen Corporation • 542 Flynn Rd • Camarillo • CA 93012 • Tel: 800.955.6288 • E-mail: techsupport@invitrogen.com
This antibody is manufactured under a licensed process covered by Patent # 5, 599, 681.

PI44232G

(Rev 11/08) DCC-08-1089

Important Licensing Information - These products may be covered by one or more Limited Use Label Licenses (see the Invitrogen Catalog or our website, www.invitrogen.com). By use of these products you accept the terms and conditions of all applicable Limited Use Label Licenses. Unless otherwise indicated, these products are for research use only and are not intended for human or animal diagnostic, therapeutic or commercial use.

Related Products:**Antibodies:**ZAP-70 [pY²⁹²], Cat. # 44-230GBLNK [pY⁸⁴], Cat. # 44-220SLP-76 [pY¹⁴⁵], Cat. # 44-222LAT [pY¹³²], Cat. # 44-224LAT [pY¹⁹¹], Cat. # 44-228CREB [pSpS^{129/133}], Cat. # 44-297GVav1 [pY¹⁶⁰], Cat. # 44-482Pyk2 [pY⁴⁰²], Cat. # 44-618GPLCγ-1 [pY⁷⁸³], Cat. # 44-696NFκB [pS⁵²⁹], Cat. # 44-711GIKKα [pSpS^{176/180}], Cat. # 44-714IκBα [pSpS^{32/36}], Cat. # 44-726GLck [pY¹⁹²], Cat. # 44-844NFAT-1 [pS⁵⁴], Cat. # 44-944PKCθ [pT⁵³⁸], Cat. # 44-960PKCθ [pT⁶⁹⁵], Cat. # 44-979Cofilin [pS³], Cat. # 44-1072G**Peptides:** ZAP-70 [pYpY^{315/319}] control peptides, Cat. # 04-232Z**References:**Orchard, J.A., et al. (2004) ZAP-70 expression and prognosis in chronic lymphocytic leukaemia. *Lancet* 363(9403):105-111.Sakaguchi, N., et al. (2003) Altered thymic T-cell selection due to a mutation of the ZAP-70 gene causes autoimmune arthritis in mice *Nature* 426(6965):454-460.Bottini, N., et al. (2002) Activation of ZAP-70 through specific dephosphorylation at the inhibitory Tyr-292 by the low molecular weight phosphotyrosine phosphatase (LMPTP). *J. Biol. Chem.* 277(27):24220-24224.Di Bartolo, V., et al. (2002) Tyrosine 315 determines optimal recruitment of ZAP-70 to the T cell antigen receptor. *Eur. J. Immunol.* 32(2):568-575.Magnan, A., et al. (2001) T cell development and T cell responses in mice with mutations affecting tyrosines 292 or 315 of the ZAP-70 protein tyrosine kinase. *J. Exp. Med.* 194(4):491-505.Gong, Q., et al. (2001) Requirement for tyrosine residues 315 and 319 within zeta chain-associated protein 70 for T cell development. *J. Exp. Med.* 194(4):507-518.Wu, J., et al. (1997) The Vav binding site (Y315) in ZAP-70 is critical for antigen receptor-mediated signal transduction. *J. Exp. Med.* 185(10):1877-1882.Kong, G., et al. (1996) Distinct tyrosine phosphorylation sites in ZAP-70 mediate activation and negative regulation of antigen receptor function. *Mol. Cell. Biol.* 16(9):5026-5035.**Peptide Competition and Phosphatase Treatment**

Lysates prepared from Jurkat cells left untreated (1) or treated with H₂O₂ (2-6) were resolved by SDS-PAGE on a 10% polyacrylamide gel and transferred to PVDF. Membranes were either left untreated (1-6) or treated with YOP phosphatase (7), blocked with a 5% BSA-TBST buffer for one hour at room temperature, and incubated with ZAP-70 [pYpY^{315/319}] antibody for two hours at room temperature in a 3% BSA-TBST buffer, following prior incubation with: no peptide (1, 2, 6), the non-phosphopeptide corresponding to the immunogen (3), a generic phosphotyrosine-containing peptide (4) the phosphopeptide immunogen (5) or, the phosphopeptide corresponding to ZAP-70 [pY³¹⁵] (6). After washing, membranes were incubated with goat F(ab')₂ anti-rabbit IgG HRP conjugate (Cat. # ALI4404) and bands were detected using the Pierce SuperSignal™ method.

The data show that only the peptide corresponding to ZAP-70 [pYpY^{315/319}] completely blocks the antibody signal. The data also show that phosphatase stripping eliminates the signal, verifying that the antibody is phospho-specific.

This product is for research use only. Not for use in diagnostic procedures.

www.invitrogen.com

Invitrogen Corporation • 542 Flynn Rd • Camarillo • CA 93012 • Tel: 800.955.6288 • E-mail: techsupport@invitrogen.com

This antibody is manufactured under a licensed process covered by Patent # 5, 599, 681.

PI44232G

(Rev 11/08) DCC-08-1089

Important Licensing Information - These products may be covered by one or more Limited Use Label Licenses (see the Invitrogen Catalog or our website, www.invitrogen.com). By use of these products you accept the terms and conditions of all applicable Limited Use Label Licenses. Unless otherwise indicated, these products are for research use only and are not intended for human or animal diagnostic, therapeutic or commercial use.

Western Blotting Procedure

1. Lyse approximately 10^7 cells in 0.5 mL of ice cold Cell Lysis Buffer (formulation provided below). This buffer, a modified RIPA buffer, is suitable for recovery of most proteins, including membrane receptors, cytoskeletal-associated proteins, and soluble proteins. This cell lysis buffer formulation is available as a separate product which requires supplementation with protease inhibitors immediately prior to use (Cat. # FNN0011). Other cell lysis buffer formulations, such as Laemmli sample buffer and Triton-X 100 buffer, are also compatible with this procedure. Additional optimization of the cell stimulation protocol and cell lysis procedure may be required for each specific application.
2. Remove the cellular debris by centrifuging the lysates at 14,000 x g for 10 minutes. Alternatively, lysates may be ultracentrifuged at 100,000 x g for 30 minutes for greater clarification.
3. Carefully decant the clarified cell lysates into clean tubes and determine the protein concentration using a suitable method, such as the Bradford assay. Polypropylene tubes are recommended for storing cell lysates.
4. React an aliquot of the lysate with an equal volume of 2x Laemmli Sample Buffer (125 mM Tris, pH 6.8, 10% glycerol, 10% SDS, 0.006% bromophenol blue, and 130 mM dithiothreitol [DTT]) and boil the mixture for 90 seconds at 100°C.
5. Load 10-30 μ g of the cell lysate into the wells of an appropriate single percentage or gradient minigel and resolve the proteins by SDS-PAGE.
6. In preparation for the Western transfer, cut a piece of PVDF membrane slightly larger than the gel. Soak the membrane in methanol for 1 minute, then rinse with ddH₂O for 5 minutes. Alternatively, nitrocellulose may be used.
7. Soak the PVDF membrane, 2 pieces of Whatman paper, and Western apparatus sponges in transfer buffer (formulation provided below) for 2 minutes.
8. Assemble the gel and membrane into the sandwich apparatus.
9. Transfer the proteins at 140 mA for 60-90 minutes at room temperature.
10. Following the transfer, rinse the membrane with Tris buffered saline for 2 minutes.
11. Block the membrane with blocking buffer (formulation provided below) for one hour at room temperature or overnight at 4°C.
12. Incubate the blocked blot with primary antibody at a 1:1000 dilution in Tris buffered saline supplemented with 3% BSA and 0.1% Tween 20 for one hour at room temperature or overnight at 4°C.
13. Wash the blot with several changes of Tris buffered saline supplemented with 0.1% Tween 20.
14. Detect the antibody band using an appropriate secondary antibody, such as goat F(ab')₂ anti-rabbit IgG alkaline phosphatase conjugate (Cat. # ALI4405) or goat F(ab')₂ anti-rabbit IgG horseradish peroxidase conjugate (Cat. # ALI4404) in conjunction with your chemiluminescence reagents and instrumentation.

Cell Lysis Buffer

Formulation:

10 mM Tris, pH 7.4
100 mM NaCl
1 mM EDTA
1 mM EGTA
1 mM NaF
20 mM Na₄P₂O₇
2 mM Na₃VO₄
0.1% SDS
0.5% sodium deoxycholate
1% Triton-X 100
10% glycerol
1 mM PMSF (made from a
0.3 M stock in DMSO)
or 1 mM AEBSF (water
soluble version of PMSF)
60 μ g/mL aprotinin
10 μ g/mL leupeptin
1 μ g/mL pepstatin
(alternatively, protease inhibitor cocktail
such as Sigma Cat. # P2714 may be used)

Transfer Buffer

Formulation:

2.4 gm Tris base
14.2 gm glycine
200 mL methanol
Q.S. to 1 liter, then add
1 mL 10% SDS.
Cool to 4°C prior to use.

Tris Buffered Saline

Formulation:

20 mM Tris-HCl, pH 7.4
0.9% NaCl

Blocking Buffer

Formulation:

100 mL Tris buffered saline
5 gm BSA
0.1 mL Tween 20

This product is for research use only. Not for use in diagnostic procedures.

www.invitrogen.com

Invitrogen Corporation • 542 Flynn Rd • Camarillo • CA 93012 • Tel: 800.955.6288 • E-mail: techsupport@invitrogen.com

This antibody is manufactured under a licensed process covered by Patent # 5, 599, 681.

PI44232G

(Rev 11/08) DCC-08-1089

Important Licensing Information - These products may be covered by one or more Limited Use Label Licenses (see the Invitrogen Catalog or our website, www.invitrogen.com). By use of these products you accept the terms and conditions of all applicable Limited Use Label Licenses. Unless otherwise indicated, these products are for research use only and are not intended for human or animal diagnostic, therapeutic or commercial use.

Peptide Competition Experiment

Invitrogen's Phosphorylation Site Specific Antibodies (PSSAs) have been developed to enable the specific and sensitive detection of phosphorylation of particular amino acid residues in target proteins, while circumventing the need for protein purification, phosphopeptide mapping or handling radioactivity. The specificity of a PSSA in each experimental system can be confirmed through peptide competition. In this technique, aliquots of antibody are pre-incubated with peptide containing the sequence of the phosphopeptide immunogen used to raise the PSSA and the corresponding non-phosphopeptide. Following preincubation with the peptide, each antibody preparation is then used as a probe in antibody-based detection methods, such as Western blotting, immunocytochemistry, flow cytometry, or ELISA. With a PSSA specific for the phosphorylated target protein, pre-incubation with an excess of peptide containing the sequence of the phosphopeptide immunogen will block all antigen binding sites, while pre-incubation with the corresponding non-phosphopeptide will not affect the antibody.

Invitrogen has developed a line of control peptides specifically for use in peptide competition experiments with our PSSAs. These peptides, available as separate Invitrogen catalog items, are provided in pairs which contain the sequences of the phosphopeptide immunogen and the corresponding non-phosphopeptide.

In performing the Peptide Competition Experiment, it is important to note that the optimal dilutions of both antibody and peptide should be determined empirically for each specific application. The optimal dilution of antibody in these procedures is below saturating, as determined by previous experiments in your system. If an optimal antibody dilution has not been determined in your system, please refer to the Suggested Working Dilution on the antibody Product Analysis Sheet for guidance on an appropriate starting dilution. The optimal dilution of peptide used in these procedures will depend on the overall affinity or avidity of the antibody, as well as the quantity of the target antigen. A 50-150 fold molar excess of peptide to antibody is found to be effective for most peptide competition experiments.

In the example presented below, the PSSA is used as a dilution of 1:1000 and the peptides are used at a concentration of 333 nM. The total volume of the phosphopeptide and non-phosphopeptide-pre-incubated antibody preparations is 2 mL, sufficient for probing Western blot strips, as well as for use in other antibody-based detection methods. Under these conditions, the molar excess of peptide to antibody is ≥ 50 .

Procedure:

1. Prepare three *identical test samples*, such as identical PVDF or nitrocellulose strips to which the protein of interest has been transferred. The test samples should be blocked using a blocking buffer, such as Tris buffered saline supplemented with 0.1% Tween 20, and either 5% BSA or 5% non-fat dried milk.
2. Prepare 6.5 mL of *working antibody stock solution* (1:1000 in this example) by adding 6.5 μ L of antibody stock solution to 6.5 mL of buffer containing blocking protein, such as TBS supplemented with 0.1% Tween 20, and either 3% BSA or 3% non-fat dried milk.
3. Apportion the unused PSSA into working aliquots and store at -20°C for future use (the stock PSSA contains 50% glycerol and will not freeze at this temperature).
4. Allow the *lyophilized control peptides* to reach room temperature, ideally under desiccation.
5. Reconstitute each of the control peptides (supplied at 0.1 mg/vial) to a concentration of 66.7 μ M with nanopure water. For a peptide with a molecular mass of 1500 (stated on the peptide Product Analysis Sheet), reconstitution with 1 mL water yields a solution with a concentration of 66.7 μ M.
6. Apportion the unused reconstituted peptide solutions into working aliquots and store at -20°C for future use.
7. Label 3 test tubes as follows:
 - tube 1: water only no peptide control
 - tube 2: phosphopeptide
 - tube 3: non-phosphopeptide
8. Into each tube, pipette the following components:
 - tube 1: 2 mL diluted PSSA solution plus 10 μ L nanopure water
 - tube 2: 2 mL diluted PSSA solution plus 10 μ L phosphopeptide
 - tube 3: 2 mL diluted PSSA solution plus 10 μ L non-phosphopeptide
9. Incubate the three tubes for 30 minutes at room temperature with gentle rocking. During this incubation, the peptides have the chance to bind to the combining site of the antibody.
10. At the end of the incubation step, transfer the contents of each of the three tubes to clean reaction vessels containing one of the three identical test samples.

For Western blotting strips:

- Incubate the strips with the pre-incubated antibody preparations for 1 hour at room temperature or overnight at 4°C .
- Wash each strip four times, five minutes each, to remove unbound antibody.
- Transfer each strip to a new solution containing a labeled secondary antibody [e.g., goat F(ab')₂ anti-rabbit IgG alkaline phosphatase conjugate (Cat. # ALI4405) or goat F(ab')₂ anti-rabbit IgG horseradish peroxidase conjugate (Cat. # ALI4404)].
- Remove unbound secondary antibody by thorough washing, and develop the signal using your chemiluminescent reagents and instrumentation.

The signal obtained with antibody incubated with the "Water Only, No Peptide Control" (Tube 1), represents the maximum signal in the assay. This signal should be eliminated by pre-incubation with the "Phosphopeptide" (Tube 2), while pre-incubation with the "Non-Phosphopeptide" (Tube 3) should not impact the signal. If the "Phosphopeptide" only partially eliminates the signal, repeat the procedure using twice the volume of water or peptide solutions listed in Step 8. If partial competition is seen following pre-incubation with the "Non-Phosphopeptide", repeat the procedure using half the volumes of water or peptide solutions listed in Step 8.

This product is for research use only. Not for use in diagnostic procedures.

www.invitrogen.com

Invitrogen Corporation • 542 Flynn Rd • Camarillo • CA 93012 • Tel: 800.955.6288 • E-mail: techsupport@invitrogen.com

This antibody is manufactured under a licensed process covered by Patent # 5, 599, 681.

PI44232G

(Rev 11/08) DCC-08-1089

Important Licensing Information - These products may be covered by one or more Limited Use Label Licenses (see the Invitrogen Catalog or our website, www.invitrogen.com). By use of these products you accept the terms and conditions of all applicable Limited Use Label Licenses. Unless otherwise indicated, these products are for research use only and are not intended for human or animal diagnostic, therapeutic or commercial use.