

CaptureSelect™ Biotin Anti-IgG-Fc (ms) Conjugate

Catalog Number 7102852100 and 7102852500

Pub. No. MAN0010062 Rev. B.0

Cat. no.	Quantity	Contents	Storage conditions
7102852100	100 µg	1 mg/mL protein in PBS, pH 7.4 (no preservatives added)	<ul style="list-style-type: none"> 4°C for short-term storage (up to 1 month) -5°C to -30°C for long-term storage (aliquot to prevent repeated freeze/thaw cycles)
7102852500	500 µg	1 mg/mL protein in PBS, pH 7.4 (no preservatives added)	

WARNING! Read the Safety Data Sheets (SDSs) and follow the handling instructions. Wear appropriate protective eyewear, clothing, and gloves. Safety Data Sheets (SDSs) are available from thermofisher.com/support.

Product description

CaptureSelect™ Biotin Anti-IgG-Fc (ms) Conjugate consists of a 13 kDa Llama antibody fragment (affinity ligand) that specifically binds to the Fc part of IgG from multiple species (see Figure 1).

The affinity ligand is chemically conjugated to biotin via an appropriate spacer that retains the binding reactivity of the ligand when immobilized on streptavidin-functionalized surfaces. The Biotin Anti-IgG-Fc (ms) format allows you to:

- Detect, quantitate, and characterize** — IgG antibodies for multiple species (all subclasses, IgG-specific), multi-species IgG-derived Fc-fusion proteins, recombinant IgG antibodies, and total IgG in plasma and/or serum samples.
- Avoid cross-binding** — Biotin Anti-IgG-Fc (ms) does not cross-bind with other isotypes such as IgA and IgM.

Applications for the CaptureSelect™ Biotin Conjugate include Capture ELISA, Western blot, Gyros™ Gyrolab™-based immunoassays, and label-free detection platforms such as those based on surface plasmon resonance (SPR; Biacore™ and IBIS-MX96 systems) and bio-layer interferometry (BLI; ForteBio™ Octet™ systems).

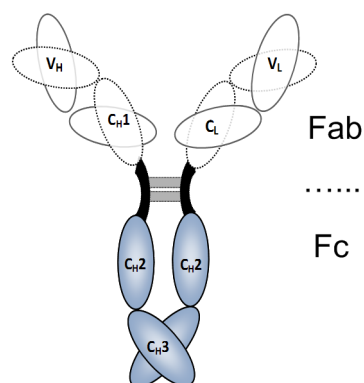


Figure 1 Representation of an IgG antibody. The Fc domain of IgG antibodies (in dark blue) is recognized by Biotin Anti-IgG-Fc (ms).

Binding selectivity: Biotin Anti-IgG-Fc (ms)

Antibody target	Isotype/subclass	Binding selectivity [1]
IgG	All subclasses	✓
	IgG Fc-fusions	✓
Ab isotypes	IgM, IgA, IgE, IgD	-
Ab fragments	IgG Fc	✓
	IgG Fab	-
Ab species	Mouse, rat, rabbit	✓
	Guinea pig, Syrian hamster	✓
	Swine, goat, sheep	✓
	Bovine, donkey	✓
	Dog, cat	✓
	Human, chimpanzee, rhesus, cynomolgus	✓
	Chicken	-

[1] Selectivity analyzed with mono- and/or polyclonal antibodies

Capture ELISA guidelines for use

Note: Use the recommended materials or their equivalents:

- Buffer – PBS, 0.05% (v/v) Tween™ 20, 1% (w/v) BSA.
 - Plates – Nunc MaxiSorp™ flat-bottom 96-well plates. Coat with 1 µg/mL of streptavidin in PBS, 100 µL/well, and let sit overnight at 4°C.
 - Detection antibody – Goat anti-Mouse-IgG (H+L) HRP conjugates, such as those from Bio-Rad™ Laboratories, or any other captured species-specific antibody or conjugate.
1. Prepare CaptureSelect™ Biotin Conjugate (5 µg/mL in buffer), then add 100 µL/well to the streptavidin-coated plates. Let sit for 1 hour at room temperature to immobilize.
 2. Prepare a dilution series of samples that contain, for example, mouse IgG. Add 100 µL/well to the Biotin Anti-IgG-Fc (ms)-functionalized plates. Let sit for 1 hour at room temperature.
 3. Use commercially available detection antibodies to detect bound antibody molecules.
 4. Use TMB/H₂O₂-based substrates (or equivalent substrates suitable for HRP) to generate a color reaction.

Note: To achieve good assay sensitivity or LLOD (lower limit of detection), you must optimize the ELISA conditions. We recommend using antibody-specific conjugates for detection to limit serum-induced background signals. Background signals may vary between serum samples.

Capture ELISA application example

When immobilized on streptavidin-coated microtiter plates, Biotin Anti-IgG-Fc (ms) can be used as a capturing agent in highly sensitive assays to detect and quantitate multispecies IgG antibodies (all subclasses, IgG-specific) and multispecies IgG-derived Fc-fusion proteins, without cross-binding with other isotypes such as IgA and IgM. You can detect captured antibody molecules using commercially available secondary antibody reagents. See Figure 2.

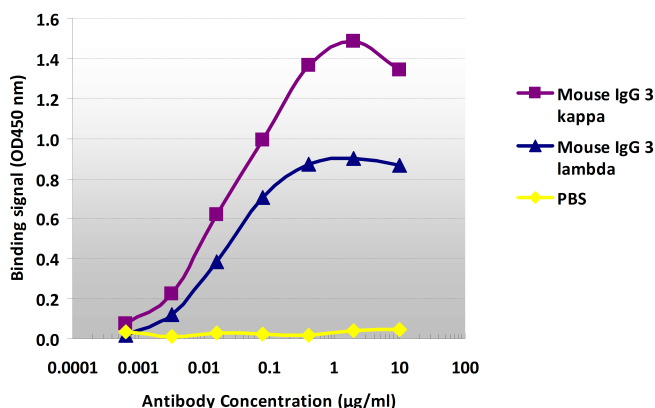


Figure 2 Example dose-response curves for monoclonal mouse IgG3 kappa and lambda in Capture ELISA using Biotin Anti-IgG-Fc (ms) as the capturing agent.

Western blot guidelines for use

Note: Use the recommended materials or their equivalents:

- Buffer – PBS, 1% (w/v) skimmed milk, 0.05% (v/v) Tween™ 20.
1. Run the protein sample(s) of interest by SDS PAGE under non-reducing conditions, then transfer the separated proteins onto an appropriate membrane (for example, by electroblotting).

Note: When protein samples are run under reducing conditions, we have observed poor to no binding with Biotin Anti-IgG-Fc (ms) in Western blot applications.
 2. Block the membrane for 1 hour at room temperature with 2% (w/v) skimmed milk in PBS.
 3. Incubate the blocked membrane with Biotin Anti-IgG-Fc (ms), 1 µg/mL in buffer.
 4. Detect bound Biotin Anti-IgG-Fc (ms) using streptavidin-AP conjugate, 1:2000 in buffer.
 5. Use BCIP/NBT-based substrates (or equivalent substrates suitable for AP) to generate a color reaction.

Western blot application example

In combination with commercially available streptavidin-AP conjugates, the CaptureSelect™ Biotin Conjugate can be used in Western blot for the specific detection of IgG antibodies from multiple species (all subclasses, IgG-specific) or Fc-fusion proteins thereof, without cross-binding with other isotypes such as IgA and IgM. See Figure 3.

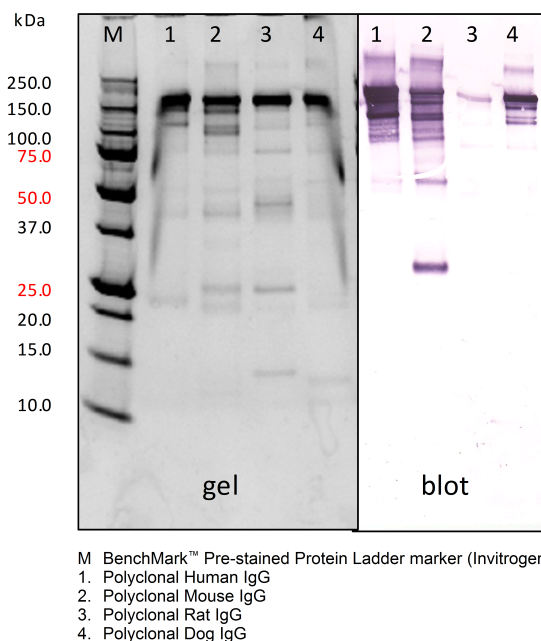


Figure 3 Western blot analysis of different species of IgG antibodies (non-reduced) using Biotin Anti-IgG-Fc (ms). The polyclonal samples have a purity of approximately 97%.

Label-free and real-time binding assays

The CaptureSelect™ Biotin Conjugate can be used in label-free and real-time binding assays such as bio-layer interferometry (BLI) and surface plasmon resonance (SPR). Both systems provide streptavidin-linked biosensors that can immobilize biotinylated affinity ligands for use as capturing agents to measure interactions with IgG antibodies from multiple species.

Bio-layer interferometry (BLI) guidelines for use

Note: Use the recommended materials or their equivalents.

1. Load prepared CaptureSelect™ Biotin Conjugate (5 µg/mL in 200 µL of PBS) on ForteBio™ Streptavidin (SA) Biosensors for 10 minutes at a shake speed of 400 rpm, then wash with PBS for 2.5 minutes.
2. Bind antibody target samples (0.1–250 µg/mL in PBS) for 10 minutes at a shake speed of 1000 rpm, then dissociate with PBS for 10 minutes.
3. (Optional) Regenerate the biosensors with 0.1 M glycine, pH 2, for 5 minutes at a shake speed of 1000 rpm.

BLI application example

The CaptureSelect™ Biotin Conjugate is highly compatible with ForteBio™ Streptavidin (SA) Biosensors, and can be used in a range of applications for antibody analytics on the Octet™ platform. See Figure 4 and Figure 5.

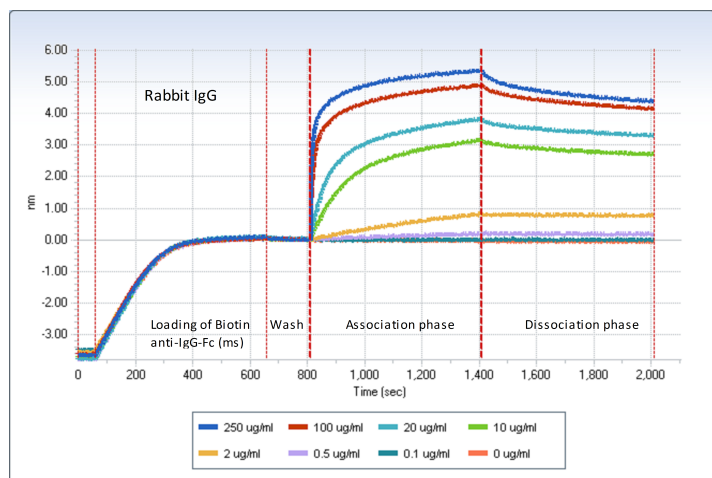


Figure 4 Binding analysis of rabbit IgG demonstrates ForteBio™ Streptavidin (SA) Biosensors (Octet™ QK system) functionalized with Biotin Anti-IgG-Fc (ms) followed by association and dissociation of rabbit IgG samples at different antibody concentrations.

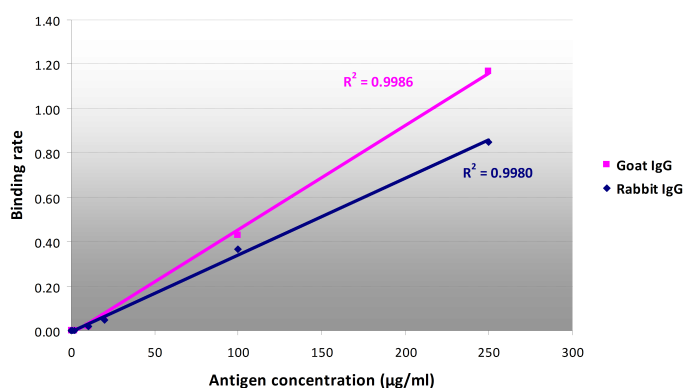


Figure 5 Example calibration curves of goat and rabbit IgG on Biotin Anti-IgG-Fc (ms)-functionalized biosensors. To demonstrate the use of Biotin Anti-IgG-Fc (ms) for quantitation purposes, binding rates were obtained for the first 10 seconds of association.

Surface plasmon resonance (SPR) guidelines for use

Note: Use the recommended materials or their equivalents.

1. Load prepared CaptureSelect™ Biotin Conjugate (10 µg/mL in HBS-EP buffer) onto a Biacore™ Sensor Chip SA (Biacore™ 3000 system) at a flow rate of 10 µL/minute for at least 3 minutes.
2. Bind antibody target samples (10 µg/mL in HBS-EP buffer) at a flow rate of 5 µL/minute for 1 minute.
3. Dissociate in HBS-EP buffer at a flow rate of 5 µL/minute for 2.5 minutes.
4. Regenerate after each cycle with 0.1 M glycine, pH 2, at a flow rate of 30 µL/minute for 1.5 minutes.

SPR application example

The CaptureSelect™ Biotin Conjugate is compatible with the Biacore™ Sensor Chip SA and the Biacore™ Biotin CAPture Kit, which enables reversible capture of biotinylated molecules and standardized regeneration for interaction studies. See Figure 6 and Table 1.

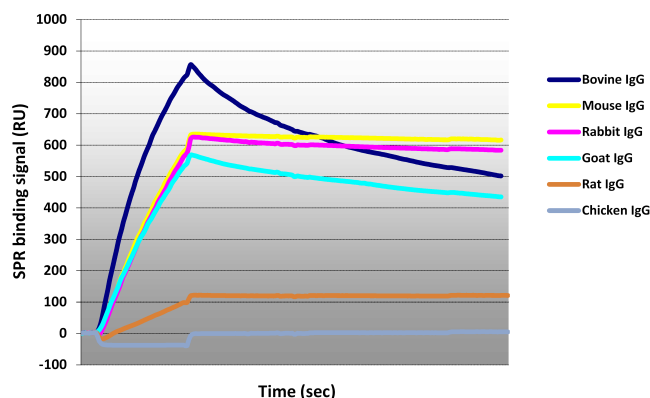


Figure 6 Association and dissociation curves of polyclonal IgG antibodies for multiple species (bovine, mouse, rabbit, goat, rat, and chicken) on Biacore™ Sensor Chips SA (Biacore™ 3000 system) functionalized with Biotin Anti-IgG-Fc (ms).

Table 1 Relative binding selectivity for polyclonal IgG antibodies from 17 species on a Biotin Anti-IgG-Fc (ms)-functionalized Biacore™ Sensor Chip SA (Biacore™ 3000 system). The Biotin Anti-IgG-Fc (ms) format prevents cross-binding with other isotypes, such as IgA and IgM.

IgG species (polyclonal)	Binding ^[1]	IgG species (polyclonal)	Binding ^[1]
Human	++	Donkey	++
Bovine	++	Horse	+
Mouse	++	Dog	++
Rat	+	Cat	++
Guinea pig	+	Syrian hamster	++
Swine	++	Chicken	-
Sheep	++	Rhesus	++
Goat	++	Chimpanzee	++
Rabbit	++	Cynomolgus	++

^[1] -: <10 RU, +: 10–200 RU, ++: >200 RU

Ordering Information

CaptureSelect™ Biotin Conjugates	Cat. no.
Anti-Free LC-kappa (Human)	7103292100 (100 µg) 7103292500 (500 µg)
Anti-IgA	7102882100 (100 µg) 7102882500 (500 µg)
Anti-IgG3 (Human)	7103042100 (100 µg) 7103042500 (500 µg)
Anti-IgG4 (Human)	7102902100 (100 µg) 7102902500 (500 µg)
Anti-IgG-CH1	7103202100 (100 µg) 7103202500 (500 µg)
Anti-IgG-Fc (Human)	7103262100 (100 µg) 7103262500 (500 µg)
Anti-IgG-Fc (Multi-species)	7102852100 (100 µg) 7102852500 (500 µg)
Anti-IgM	7102892100 (100 µg) 7102892500 (500 µg)
Anti-LC-kappa (Human)	7103272100 (100 µg) 7103272500 (500 µg)
Anti-LC-kappa (Murine)	7103152100 (100 µg) 7103152500 (500 µg)
Anti-LC-lambda (Human)	7103082100 (100 µg) 7103082500 (500 µg)
Human Fab-kappa Kinetics	7103302100 (100 µg) 7103302500 (500 µg)
Human Fab-lambda Kinetics	7103312100 (100 µg) 7103312500 (500 µg)

For more information

For more information on CaptureSelect™ products and ligand leakage ELISA products, go to www.thermofisher.com/captureselect.

Customer and technical support

Visit thermofisher.com/support for the latest in services and support, including:

- Worldwide contact telephone numbers
- Product support, including:
 - Product FAQs
 - Software, patches, and updates
- Order and web support
- Product documentation, including:
 - User guides, manuals, and protocols
 - Certificates of Analysis
 - Safety Data Sheets (SDSs; also known as MSDSs)

Note: For SDSs for reagents and chemicals from other manufacturers, contact the manufacturer.

Limited product warranty

Life Technologies Corporation and/or its affiliate(s) warrant their products as set forth in the Life Technologies' General Terms and Conditions of Sale found on Life Technologies' website at www.thermofisher.com/us/en/home/global/terms-and-conditions.html. If you have any questions, please contact Life Technologies at www.thermofisher.com/support.

The information in this guide is subject to change without notice.

DISCLAIMER

TO THE EXTENT ALLOWED BY LAW, LIFE TECHNOLOGIES AND/OR ITS AFFILIATE(S) WILL NOT BE LIABLE FOR SPECIAL, INCIDENTAL, INDIRECT, PUNITIVE, MULTIPLE, OR CONSEQUENTIAL DAMAGES IN CONNECTION WITH OR ARISING FROM THIS DOCUMENT, INCLUDING YOUR USE OF IT.

Important Licensing Information: These products may be covered by one or more Limited Use Label Licenses. By use of these products, you accept the terms and conditions of all applicable Limited Use Label Licenses.

©2015 Thermo Fisher Scientific Inc. All rights reserved. All trademarks are the property of Thermo Fisher Scientific and its subsidiaries unless otherwise specified. Biacore is a trademark of GE Healthcare Bio-Sciences AB. Bio-Rad is a trademark of Bio-Rad Laboratories, Inc. ForteBio and Octet are trademarks of Pall ForteBio Corporation. Gyrolab and Gyros are trademarks of Gyros Patent AB. MaxiSorp is a trademark of eBioscience, Inc. Tween is a trademark of Uniqema Americas, LLC.

For support visit thermofisher.com/support or email techsupport@lifetech.com

thermofisher.com

ThermoFisher
SCIENTIFIC