

ABfinity™ COT/TPL2/MAP3K8 Recombinant Rabbit Oligoclonal Antibody

Store at 2°C to 8°C (short-term), or -20°C (long-term)

Catalog Number: 710377

Pub. No. MAN0007444 **Rev.** 1.00

Clonality: Oligoclonal	Quantity: 100 µg	Volume: 200 µL	Concentration: 0.5 mg/mL
Host/Class: Rabbit IgG	Reactivity: Human COT/TPL2/MAP3K8		Predicted Reactivity: Human

Product Description

Cancer Osaka thyroid oncogene (COT), also known as MAP3K8/TPL2 (mitogen activated protein kinase 8/tumor progression locus 2) is a member of the serine threonine protein kinase family. This protein is localized in the cytoplasm, and functions to activate JNK and MAP kinase pathways. COT also activates IK-B kinases to stimulate nuclear production of NF-KappaB, mediates production of IL-2 and TNF-alpha during T cell activation, and is involved in T-cell co-stimulation, signal transduction, and amino acid phosphorylation. The COT protein is encoded by the MAP3K8 gene located on chromosome 10.

Product Specifications

Immunogen:	Peptide corresponding to amino acids 282-293 of human COT/TPL2/MAP3K8
Alternate Names:	TPL2, Protooncogene c-Cot, ESTF, MAP3K8
Apparent MW:	~52 kDa
Gene ID:	1326
Protein Accession No.:	P41279
Sequence Identity:	Human
Sequence Homology:	Mouse, Rat, Rabbit, Horse, Dog, Bovine
Clone/PAD:	3HCLC
Lot:	See product label

Product Applications

Application	Species	Test Material	Concentration
Western blotting	Human	Jurkat, 3T3-L1, HepG2 cells	2-3 µg/ mL
Flow cytometry	Human	HeLa cells	1 × 10 ⁻⁶ cells to 1 µg/mL
Indirect ELISA	Human	Peptide	1.5 × 10 ⁻⁴ to 3 µg/mL

Storage and Handling

Store the antibody at 2°C to 8°C for up to 1 month, -20°C for long storage. Avoid repeated freezing and thawing.

Stability

When stored as instructed, expires one year from date of receipt unless otherwise indicated on product label.

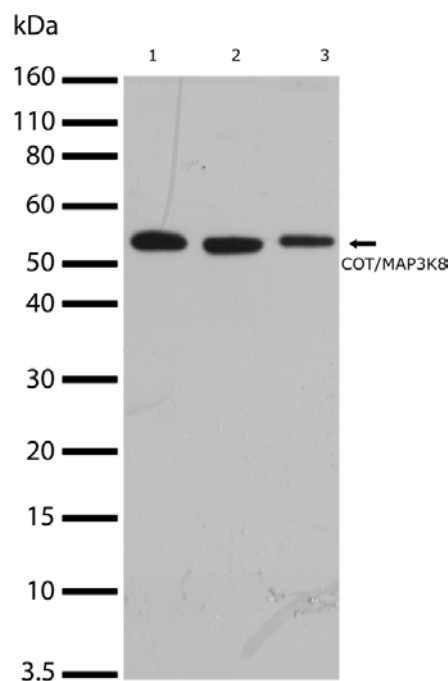


Figure 1 Western blot analysis of ABfinity™ COT/TPL2/MAP3K8 Recombinant Rabbit Oligoclonal Antibody (Cat. no. 710377).

Western blot analysis was performed on whole cell extracts from Jurkat cells (lane 1), 3T3L1 cells (lane 2), and HepG2 cells (lane 3). Endogenous levels of COT/TPL2/MAP3K8 was detected at ~52 kDa using ABfinity™ COT/TPL2/MAP3K8 Recombinant Rabbit Oligoclonal Antibody at a concentration of 2 µg/mL. The blot was developed using enhanced chemiluminescence (ECL) method.

Storage Buffer

Phosphate buffered saline (PBS) with 0.09% sodium azide.



CAUTION! Sodium azide is extremely toxic and may react with lead and copper plumbing to form highly explosive metal azides. Properly dispose of solutions containing sodium azide. Read the Safety Data Sheets (SDSs) and follow the handling instructions. Wear appropriate protective eyewear, clothing, and gloves. SDSs are available at www.lifetechnologies.com/support.

For research use only. Not for use in diagnostic procedures.

Manufacturing Site • 7335 Executive Way • Frederick • MD 21704 • E-mail: techsupport@lifetech.com

Product Documentation

To obtain a Certificate of Analysis or SDS, visit www.lifetechnologies.com/support.

Related Products

Product Name	Quantity	Catalog No.
iBlot® Dry Blotting System	1 unit	IB1001
WesternBreeze® Chromogenic Kit Anti-Rabbit	1 kit	WB7105
WesternBreeze® Chemiluminescent Kit, Anti-Rabbit	1 kit	WB7106

Limited Product Warranty

Life Technologies Corporation and/or its affiliate(s) warrant their products as set forth in the Life Technologies' General Terms and Conditions of Sale found on Life Technologies' website at www.lifetechnologies.com/termsandconditions. If you have any questions, please contact Life Technologies at www.lifetechnologies.com/support.

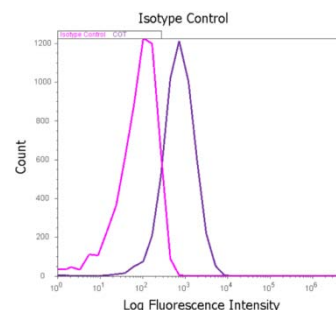


Figure 2 Flow cytometry analysis of HeLa cells labelled with ABfinity™ COT/TPK2/TPK3K8 Recombinant Rabbit Oligoclonal Antibody (Cat. no. 710377).

Fixed and permeabilized HeLa cells were labeled with ABfinity™ MIP-1 beta Recombinant Rabbit Oligoclonal Antibody, followed by Alexa Fluor® 488 goat anti-rabbit IgG staining (right peak). To confirm specificity, the cells were labeled with an isotype control and stained using Alexa Fluor® 488 goat anti-rabbit IgG (left peak).

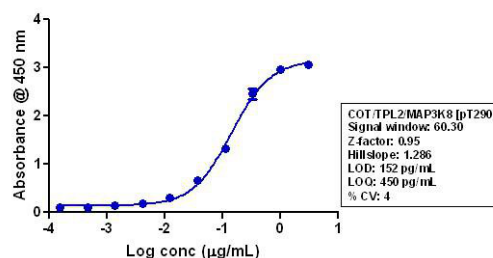


Figure 3 Indirect ELISA of ABfinity™ COT/TPK2/TPK3K8 Recombinant Rabbit Oligoclonal Antibody (Cat. no. 710377).

Indirect ELISA was performed using various dilutions of ABfinity™ COT/TPK2/TPK3K8 Recombinant Rabbit Oligoclonal Antibody to detect COT/TPK2/TPK3K8 peptide coated onto the plate. A non-linear regression analysis was performed (4 PL), LOD and LOQ for the antibody was determined.

Explanation of symbols

Symbol	Description	Symbol	Description	Symbol	Description
	Manufacturer		Catalog number		Batch code
	Use by		Temperature limitation		
	Consult instructions for use		Caution, consult accompanying documents		

Limited Use Label License No. 327: Recombinant Antibody Technology

Notice to Purchaser: The purchase of this product conveys to the buyer the non-transferable right to use the purchased amount of the product and components of the product in research and manufacturing conducted by the buyer (whether the buyer is an academic or for-profit entity). The buyer cannot sell or otherwise transfer (a) this product, (b) its components or (c) materials made using this product or its components to a third party or otherwise use this product or its components or materials made using this product or its components for Commercial Purposes. The buyer may transfer information or materials made through the use of this product to a scientific collaborator, provided that such transfer is not for any Commercial Purpose, and that such collaborator agrees in writing (a) not to transfer such materials to any third party, and (b) to use such transferred materials and/or information solely for research and not for Commercial Purposes. Commercial Purposes means any activity by a party for consideration and may include, but is not limited to: (1) use of the product or its components for contract manufacturing services; (2) use of the product or its components to provide a service, information, or data; (3) use of the product itself or its components as a therapeutic, diagnostic or prophylactic; or (4) resale of the product or its components, whether or not such product or its components are resold for use in research or manufacturing. If the purchaser is not willing to accept the limitations of this limited use statement, Life Technologies is willing to accept return of the product for a full refund. For information on obtaining additional rights, please contact outlicensing@lifetech.com.

DISCLAIMER: LIFE TECHNOLOGIES AND/OR ITS AFFILIATE(S) DISCLAIM ALL WARRANTIES WITH RESPECT TO THIS DOCUMENT, EXPRESSED OR IMPLIED, INCLUDING BUT NOT LIMITED TO THOSE OF MERCHANTABILITY, FITNESS FOR A PARTICULAR PURPOSE, OR NON-INFRINGEMENT. TO THE EXTENT ALLOWED BY LAW, IN NO EVENT SHALL LIFE TECHNOLOGIES AND/OR ITS AFFILIATE(S) BE LIABLE, WHETHER IN CONTRACT, TORT, WARRANTY, OR UNDER ANY STATUTE OR ON ANY OTHER BASIS FOR SPECIAL, INCIDENTAL, INDIRECT, PUNITIVE, MULTIPLE OR CONSEQUENTIAL DAMAGES IN CONNECTION WITH OR ARISING FROM THIS DOCUMENT, INCLUDING BUT NOT LIMITED TO THE USE THEREOF.

©2012 Life Technologies Corporation. All rights reserved. The trademarks mentioned herein are the property of Life Technologies Corporation or their respective owners.

For support visit www.lifetechnologies.com/support or email techsupport@lifetech.com

www.lifetechnologies.com

15 November 2012

life
technologies™