

## STAT5 $\alpha$ [pY694] Rabbit Recombinant Oligoclonal Antibody – Purified

MAN0004616

Rev. Date: 21 June 2011

Catalog Number: 710094

Store at 2–8°C

**Clonality:** Oligoclonal  
**Concentration:** 0.5 mg/mL

**Host/Class:** Rabbit IgG  
**Reactivity:** Human Signal transducer and activator of transcription 5 $\alpha$

**Quantity:** 100  $\mu$ g  
**Volume:** 200  $\mu$ L

**Predicted Reactivity:** Human

### Product Description

STAT5 consisting of isoform  $\alpha$  and  $\beta$ , belongs to the family of STAT proteins, also known as signal transducers and activators of transcription. STAT proteins undergo phosphorylation by receptor associated kinases in response to cytokines and growth factors, and are translocated to the nucleus to act as transcription factors. STAT5 $\alpha$  is activated by IL2, IL3, IL7 GM-CSF, erythropoietin, thrombopoietin, and different growth hormones. Phosphorylation of tyrosine 694 is important in mediating erythropoietin-induced signaling and prolactin-induced development and differentiation of mammary epithelial cells. In humans, STAT5 $\alpha$  gene is located on chromosome 17.

### Product Specifications

**Immunogen:** Peptide corresponding to amino acids 688–698 of human STAT5 $\alpha$   
**Alternate Names:** MGF  
**Apparent MW:** ~90 kDa  
**Gene ID:** 6776  
**Protein Accession No.:** P42229  
**Sequence Identity:** Human  
**Sequence Homology:** Mouse, Rat, Monkey  
**Clone/PAD:** 6HCLC  
**Lot:** See product label

### Product Applications

Application	Species	Test Material	Concentration
Western blotting	Human	Jurkat cells (High log phase)	2–5 $\mu$ g/mL
Indirect ELISA	Human	Phosphopeptide	$1.5 \times 10^{-4}$ to 3 $\mu$ g/mL

### Storage and Handling

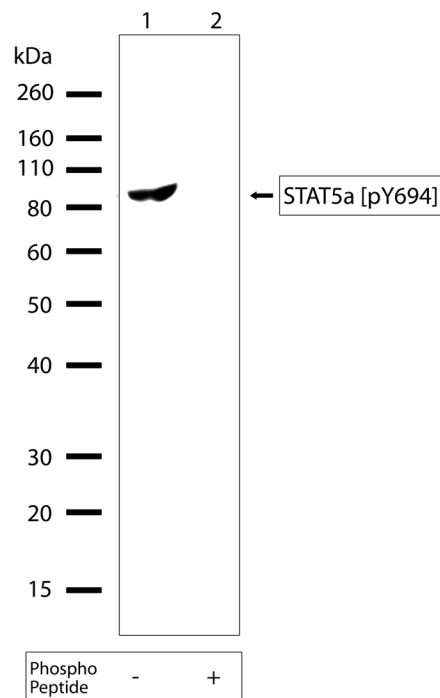
Store the antibody at 2–8°C for up to 1 month, or –20°C for long storage. Avoid repeated freezing and thawing.

### Stability

Expires one year from date of receipt when stored as instructed.

### Storage Buffer

Phosphate buffered saline (PBS) with 0.09% sodium azide.



**Figure 1** Western blot analysis of STAT5 $\alpha$  [pY694] Rabbit Recombinant Oligoclonal Antibody (Cat. no. 710094). Western blot analysis was performed on whole cell extracts of Jurkat at high log phase (lanes 1 and 2). Phospho-STAT5 $\alpha$  [pY694] was detected using STAT5 $\alpha$  [pY694] Rabbit Recombinant Oligoclonal Antibody at 2.5  $\mu$ g/mL (lane 1). A specific band of ~90 kDa corresponding to the phosphorylated STAT5 $\alpha$  was detected. To confirm specificity, competition was performed with the phosphopeptide, showing inhibition of antibody binding (lane 2).

**For research use only. Not for human or animal therapeutic or diagnostic use.**

Manufacturing Site • 7335 Executive Way • Frederick • MD 21704 • E-mail: [techsupport@invitrogen.com](mailto:techsupport@invitrogen.com)

## Safety Data Sheets (SDS)

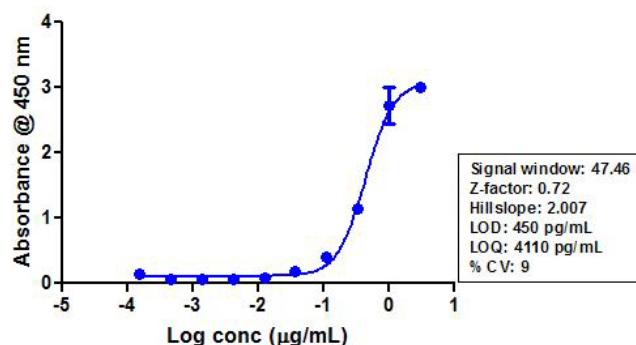
Safety Data Sheets (SDSs) are available at [www.invitrogen.com/sds](http://www.invitrogen.com/sds).

## Certificate of Analysis

The Certificate of Analysis provides detailed quality control and product qualification information for each product. Certificates of Analysis are available on our website. Go to [www.invitrogen.com/support](http://www.invitrogen.com/support) and search for the Certificate of Analysis by product lot number, which is printed on the box.

## Related Products

Product Name	Quantity	Catalog No.
iBlot® Dry Blotting System	1 unit	IB1001
WesternBreeze® Chromogenic Kit Anti-Rabbit	1 kit	WB7105
WesternBreeze® Chemiluminescent Kit, Anti-Rabbit	1 kit	WB7106
Goat anti-mouse (H+L), HRP conj.	1 mg	G21040
Goat anti-rabbit (H+L), HRP conj.	1 mg	G21234
Goat anti-mouse (H+L), AP conj.	1 mg	G21060
Goat anti-rabbit (H+L), AP conj.	1 mg	G21079
Nitrocellulose, 0.2 µm	20/pack	LC2000



**Figure 2** Indirect ELISA of STAT5α [pY694] Rabbit Recombinant Oligoclonal Antibody (Cat. no. 710094). Indirect ELISA was performed using various dilutions of STAT5α [pY694] Rabbit Recombinant Oligoclonal Antibody (Cat. no. 710094) ) to detect phospho STAT5α [pY694] peptide coated onto the plate. A non-linear regression analysis was performed (4 PL) and LOD and LOQ for the antibody was determined.

### Explanation of symbols

Symbol	Description	Symbol	Description
	Catalogue Number		Batch code
	Research Use Only		In vitro diagnostic medical device
	Use by		Temperature limitation
	Manufacturer		European Community authorised representative
	Without, does not contain		With, contains
	Protect from light		Consult accompanying documents
	Directs the user to consult instructions for use (IFU), accompanying the product.		

## Limited Use Label License: Research Use Only

The purchase of this product conveys to the purchaser the limited, non-transferable right to use the purchased amount of the product only to perform internal research for the sole benefit of the purchaser. No right to resell this product or any of its components is conveyed expressly, by implication, or by estoppel. This product is for internal research purposes only and is not for use in commercial applications of any kind, including, without limitation, quality control and commercial services such as reporting the results of purchaser's activities for a fee or other form of consideration. For information on obtaining additional rights, please contact [outlicensing@lifetech.com](mailto:outlicensing@lifetech.com) or Out Licensing, Life Technologies, 5791 Van Allen Way, Carlsbad, California 92008.

©2011 Life Technologies Corporation. All rights reserved. The trademarks mentioned herein are the property of Life Technologies Corporation or their respective owners.