

## IFN- $\gamma$ (Rt) ABfinity™ Recombinant Rabbit Monoclonal Antibody – Purified

Publication Part no. MAN0005600

Rev. 1.0

Catalog Number: 701125

Store at 2 to 8°C (short-term), or -20°C (long-term)

**Clonality:** Monoclonal  
**Concentration:** 0.5 mg/mL  
**Quantity:** 100  $\mu$ g  
**Volume:** 200  $\mu$ L

**Host/Class:** Rabbit IgG  
**Reactivity:** Rat interferon gamma  
**Predicted Reactivity:** Rat

### Product Description

Interferon gamma (IFN- $\gamma$ ), belongs to the type II interferon family and, and is encoded by the gene IFNG. It is produced by the Th1 subpopulation of helper T cells (CD4<sup>+</sup>), cytotoxic T cells (CD8<sup>+</sup>), and NK cells. IFN- $\gamma$  enhances the microbicidal function of macrophages through formation of nitric oxide and reactive oxygen intermediates (ROI). It also stimulates the expression of class I and class II MHC molecules and co-stimulatory molecules on antigen presenting cells, and promotes the differentiation of naive helper T cells into Th1 cells. IFN- $\gamma$  activates polymorphonuclear leukocytes (PMN) and cytotoxic T cells, and increases the cytotoxicity of NK cells. This antibody was raised against rat IFN- $\gamma$ . In rat, the gene is located on chromosome 7.

### Product Specifications

**Immunogen:** Recombinant protein corresponding to amino acids 23–156 of rat interferon gamma  
**Alternate Names:** IFNG2  
**Apparent MW:** ~18 kDa  
**Gene ID:** 25712  
**Protein Accession No.:** P01581  
**Sequence Identity:** Rat  
**Clone/PAD:** 18H3L15  
**Lot:** See product label

### Product Applications

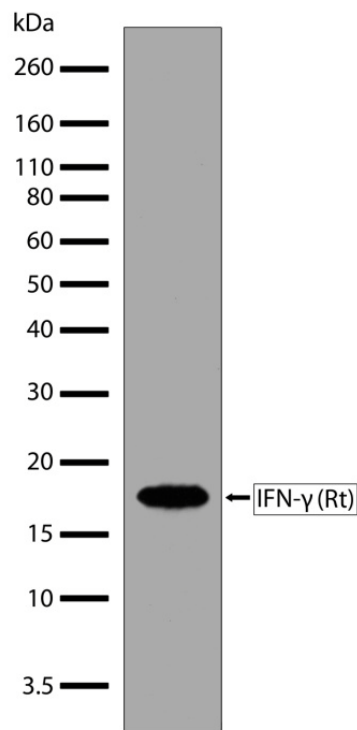
Application	Species	Test Material	Concentration
Western blotting	Rat	Active recombinant protein	0.1–3 $\mu$ g/mL
Indirect ELISA	Rat	Recombinant protein	0.5 $\times$ 10 <sup>-3</sup> to 9 $\mu$ g/mL

### Storage and Handling

Store the antibody at 2 to 8°C for up to 1 month, or -20°C for long storage. Avoid repeated freezing and thawing.

### Stability

Expires one year from date of receipt when stored as instructed.



**Figure 1** Western blot analysis of IFN- $\gamma$  (Rt) ABfinity™ Recombinant Rabbit Monoclonal Antibody (Cat. no. 701125). Western blot analysis was performed on active recombinant rat IFN- $\gamma$  protein. A band corresponding to recombinant rat IFN- $\gamma$  protein at ~18 kDa was detected using IFN- $\gamma$  (Rt) ABfinity™ Recombinant Rabbit Monoclonal Antibody at a concentration of 1  $\mu$ g/mL. The blot was developed using chemiluminescence (ECL) method.

**For research use only. Not for human or animal therapeutic or diagnostic use.**

Manufacturing Site • 7335 Executive Way • Frederick • MD 21704 • E-mail: [techsupport@invitrogen.com](mailto:techsupport@invitrogen.com)

## Storage Buffer

Phosphate buffered saline (PBS) with 0.09% sodium azide.

**Note:** Sodium azide is an extremely toxic and dangerous compound particularly when combined with acids or metals. Properly dispose of solutions containing sodium azide.

## Safety Data Sheets (SDS)

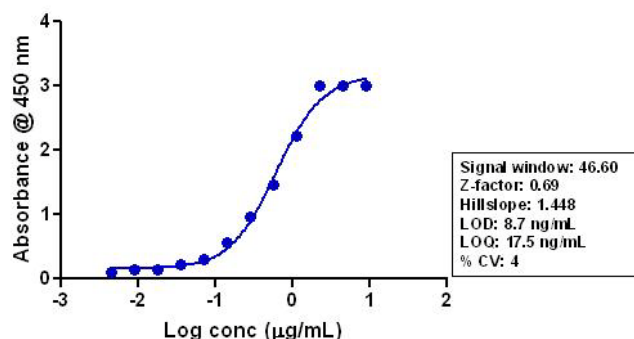
Safety Data Sheets (SDSs) are available at [www.invitrogen.com/sds](http://www.invitrogen.com/sds).

## Certificate of Analysis

The Certificate of Analysis provides detailed quality control and product qualification information for each product. Certificates of Analysis are available on our website. Go to [www.invitrogen.com/support](http://www.invitrogen.com/support) and search for the Certificate of Analysis by product lot number, which is printed on the box.

## Related Products

Product Name	Quantity	Catalog No.
iBlot® Dry Blotting System	1 unit	IB1001
WesternBreeze™ Chromogenic Kit Anti-Rabbit	1 kit	WB7105
WesternBreeze™ Chemiluminescent Kit, Anti-Rabbit	1 kit	WB7106
Goat anti-mouse (H+L), HRP conj.	1 mg	G21040
Goat anti-rabbit (H+L), HRP conj.	1 mg	G21234
Goat anti-mouse (H+L), AP conj.	1 mg	G21060
Goat anti-rabbit (H+L), AP conj.	1 mg	G21079
Nitrocellulose, 0.2 µm	20/pack	LC2000



**Figure 2** Indirect ELISA of IFN- $\gamma$  (Rt) ABfinity™ Recombinant Rabbit Monoclonal Antibody (Cat. no. 701125). Indirect ELISA was performed using various dilutions of IFN- $\gamma$  (Rt) ABfinity™ Recombinant Rabbit Monoclonal Antibody (Cat. no. 701125) to detect recombinant rat IFN- $\gamma$  protein coated onto the plate. A non-linear regression analysis was performed (4 PL) and LOD and LOQ for the antibody was determined.

### Explanation of symbols

Symbol	Description	Symbol	Description
	Catalogue Number		Batch code
	Research Use Only		In vitro diagnostic medical device
	Use by		Temperature limitation
	Manufacturer		European Community authorised representative
	Without, does not contain		With, contains
	Protect from light		Consult accompanying documents
	Directs the user to consult instructions for use (IFU), accompanying the product.		

## Limited Use Label License: Research Use Only

The purchase of this product conveys to the purchaser the limited, non-transferable right to use the purchased amount of the product only to perform internal research for the sole benefit of the purchaser. No right to resell this product or any of its components is conveyed expressly, by implication, or by estoppel. This product is for internal research purposes only and is not for use in commercial applications of any kind, including, without limitation, quality control and commercial services such as reporting the results of purchaser's activities for a fee or other form of consideration. For information on obtaining additional rights, please contact [outlicensing@lifetech.com](mailto:outlicensing@lifetech.com) or Out Licensing, Life Technologies, 5791 Van Allen Way, Carlsbad, California 92008.

©2011 Life Technologies Corporation. All rights reserved. The trademarks mentioned herein are the property of Life Technologies Corporation or their respective owners.

For support visit [www.invitrogen.com/support](http://www.invitrogen.com/support) or email [techsupport@invitrogen.com](mailto:techsupport@invitrogen.com)

[www.lifetechnologies.com](http://www.lifetechnologies.com)

Revision Date: 15 November 2011

life technologies™