

MIG ABfinity™ Recombinant Rabbit Monoclonal Antibody – Purified

Publication Part no. MAN0005263

Rev. Date: 17 October 2011

Catalog Number: 701117

Store at 2–8°C

Clonality: Monoclonal
Concentration: 0.5 mg/mL
Quantity: 100 µg
Volume: 200 µL

Host/Class: Rabbit IgG
Reactivity: Human MIG
Predicted Reactivity: Human

Product Description

MIG (monokine induced by interferon-gamma) belong to the family of chemoattractant cytokines that play a role in monocyte, and T lymphocyte chemoattraction. MIG is expressed in monocytes/macrophages, hepatocytes, fibroblasts, keratinocytes, and endothelial cells in response to interferon-γ. MIG is related functionally to interferon-inducible protein 10 (IP10), as both bind to the CXCR3 receptor to inhibit endothelial cell chemotaxis, and growth factor-induced angiogenesis.

Product Specifications

Immunogen: Recombinant protein corresponding to amino acids 23–125 of human monokine induced by Interferon-gamma
Alternate Names: CXCL9 (chemokine ligand 9)
Apparent MW: ~14 kDa
Gene ID: 4283
Protein Accession No.: Q07325
Sequence Identity: Human
Clone/PAD: 11H1L14
Lot: See product label

Product Applications

| Application | Species | Test Material | Concentration |
|------------------|---------|----------------------------|-----------------------------------|
| Western blotting | Human | Active recombinant protein | 0.1–1 µg/mL |
| Indirect ELISA | Human | Recombinant protein | 1.5 × 10 ⁻⁴ to 3 µg/mL |

Storage and Handling

Store the antibody at 2–8°C for up to 1 month, or –20°C for long storage. Avoid repeated freezing and thawing.

Stability

Expires one year from date of receipt when stored as instructed.

Storage Buffer

Phosphate buffered saline (PBS) with 0.09% sodium azide.

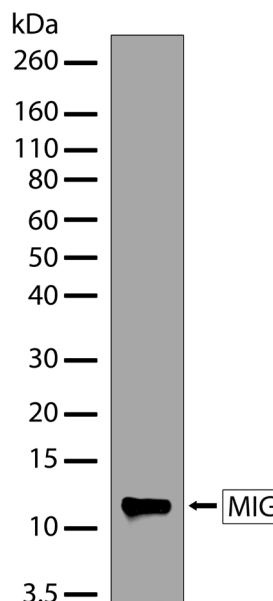


Figure 1 Western blot analysis of MIG ABfinity™ Recombinant Rabbit Monoclonal Antibody (Cat. no. 701117). Western blot analysis was performed on active recombinant human MIG protein. A band corresponding to recombinant human MIG at ~12 kDa was detected using MIG ABfinity™ Recombinant Rabbit Monoclonal Antibody at a concentration of 1 µg/mL. The blot was developed using chemiluminescence (ECL) method.

For research use only. Not for human or animal therapeutic or diagnostic use.

Manufacturing Site • 7335 Executive Way • Frederick • MD 21704 • E-mail: techsupport@invitrogen.com

Safety Data Sheets (SDS)

Safety Data Sheets (SDSs) are available at www.invitrogen.com/sds.

Certificate of Analysis

The Certificate of Analysis provides detailed quality control and product qualification information for each product. Certificates of Analysis are available on our website. Go to www.invitrogen.com/support and search for the Certificate of Analysis by product lot number, which is printed on the box.

Related Products

| Product Name | Quantity | Catalog No. |
|--|----------|-------------|
| iBlot® Dry Blotting System | 1 unit | IB1001 |
| WesternBreeze™ Chromogenic Kit Anti-Rabbit | 1 kit | WB7105 |
| WesternBreeze™ Chemiluminescent Kit, Anti-Rabbit | 1 kit | WB7106 |
| Goat anti-mouse (H+L), HRP conj. | 1 mg | G21040 |
| Goat anti-rabbit (H+L), HRP conj. | 1 mg | G21234 |
| Goat anti-mouse (H+L), AP conj. | 1 mg | G21060 |
| Goat anti-rabbit (H+L), AP conj. | 1 mg | G21079 |
| Nitrocellulose, 0.2 µm | 20/pack | LC2000 |

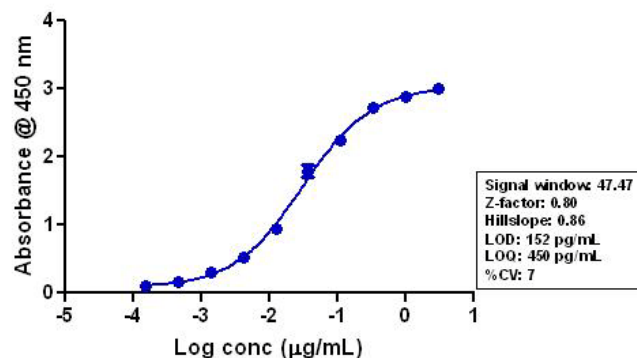


Figure 2 Indirect ELISA of MIG ABfinity™ Recombinant Rabbit Monoclonal Antibody (Cat. no. 701117). Indirect ELISA was performed using various dilutions of MIG ABfinity™ Recombinant Rabbit Monoclonal Antibody (Cat. no. 701117) to detect recombinant MIG protein coated onto the plate. A non-linear regression analysis was performed (4 PL) and LOD and LOQ for the antibody was determined.

Explanation of symbols

| Symbol | Description | Symbol | Description |
|--------|---|--------|--|
| | Catalogue Number | | Batch code |
| | Research Use Only | | In vitro diagnostic medical device |
| | Use by | | Temperature limitation |
| | Manufacturer | | European Community authorised representative |
| | Without, does not contain | | With, contains |
| | Protect from light | | Consult accompanying documents |
| | Directs the user to consult instructions for use (IFU), accompanying the product. | | |

Limited Use Label License: Research Use Only

The purchase of this product conveys to the purchaser the limited, non-transferable right to use the purchased amount of the product only to perform internal research for the sole benefit of the purchaser. No right to resell this product or any of its components is conveyed expressly, by implication, or by estoppel. This product is for internal research purposes only and is not for use in commercial applications of any kind, including, without limitation, quality control and commercial services such as reporting the results of purchaser's activities for a fee or other form of consideration. For information on obtaining additional rights, please contact outlicensing@lifetech.com or Out Licensing, Life Technologies, 5791 Van Allen Way, Carlsbad, California 92008.

©2011 Life Technologies Corporation. All rights reserved. The trademarks mentioned herein are the property of Life Technologies Corporation or their respective owners.

For support visit www.invitrogen.com/support or email techsupport@invitrogen.com

www.lifetechnologies.com

life
technologies™