

## STAT5a [pY694] ABfinity™ Recombinant Rabbit Monoclonal Antibody – Purified

Publication Part no. MAN0004982

Rev. Date: 21 August 2011

Catalog Number: 701063

Store at 2–8°C

**Clonality:** Monoclonal  
**Concentration:** 0.5 mg/mL  
**Quantity:** 100 µg  
**Volume:** 200 µL

**Host/Class:** Rabbit IgG  
**Reactivity:** Human STAT5a  
**Predicted Reactivity:** Human

### Product Description

STAT5 consisting of isoform a and b, belongs to the family of STAT (signal transducers and activators of transcription) proteins which are phosphorylated by receptor associated kinases, translocate to the nucleus, and act as transcription factors in response to cytokines and growth factors. STAT5a is activated by IL2, IL3, IL7 GM-CSF, erythropoietin, thrombopoietin, and various growth hormones. Phosphorylation of tyrosine 694 is important in mediating erythropoietin-induced signaling and prolactin-induced development and differentiation of mammary epithelial cells. This is mediated by Src upon erythropoietin stimulation. In humans, the STAT5a gene is located on chromosome 17.

### Product Specifications

**Immunogen:** Phosphopeptide corresponding to amino acids 688–698 of Human STAT5a  
**Alternate Names:** MGF  
**Apparent MW:** ~90 kDa  
**Gene ID:** 6776  
**Protein Accession No.:** P42229  
**Sequence Identity:** Human  
**Sequence Homology:** Mouse, Rat, Monkey  
**Clone/PAD:** 6H5L15  
**Lot:** See product label

### Product Applications

Application	Species	Test Material	Concentration
Western blotting	Human	A431 cells	2–5 µg/mL
Indirect ELISA	Human	Phosphopeptide	1.5x10 <sup>-4</sup> to 3 µg/mL

### Storage and Handling

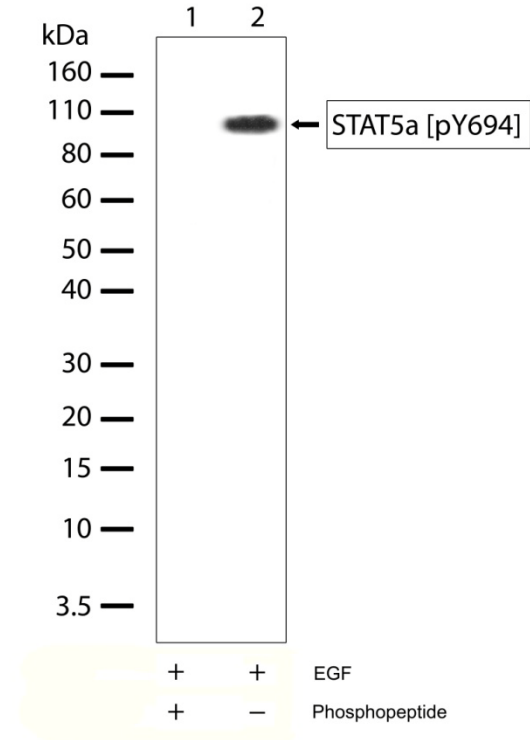
Store the antibody at 2–8°C for up to 1 month, or –20°C for long storage. Avoid repeated freezing and thawing.

### Stability

Expires one year from date of receipt when stored as instructed.

### Storage Buffer

Phosphate buffered saline (PBS) with 0.09% sodium azide.



**Figure 1** Western blot analysis of STAT5a [pY694] ABfinity™ Recombinant Rabbit Monoclonal Antibody (Cat. no. 701063). Western blot analysis was performed on whole cell extracts of A431 cells treated with EGF (100 ng/mL for 5 minutes, lanes 1 and 2). A band corresponding to phosphorylated STAT5a at ~90 kDa was detected using STAT5a [pY694] ABfinity™ Recombinant Rabbit Monoclonal Antibody at a concentration of 2.5 µg/mL (lane 2). To confirm specificity, competition was performed with the phosphopeptide (lane 1).

**For research use only. Not for human or animal therapeutic or diagnostic use.**

Manufacturing Site • 7335 Executive Way • Frederick • MD 21704 • E-mail: [techsupport@invitrogen.com](mailto:techsupport@invitrogen.com)

## Safety Data Sheets (SDS)

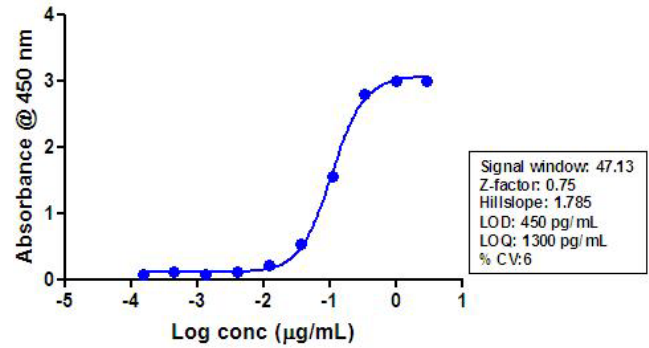
Safety Data Sheets (SDSs) are available at [www.invitrogen.com/sds](http://www.invitrogen.com/sds).

## Certificate of Analysis

The Certificate of Analysis provides detailed quality control and product qualification information for each product. Certificates of Analysis are available on our website. Go to [www.invitrogen.com/support](http://www.invitrogen.com/support) and search for the Certificate of Analysis by product lot number, which is printed on the box.

## Related Products

Product Name	Quantity	Catalog No.
iBlot® Dry Blotting System	1 unit	IB1001
WesternBreeze™ Chromogenic Kit Anti-Rabbit	1 kit	WB7105
WesternBreeze™ Chemiluminescent Kit, Anti-Rabbit	1 kit	WB7106
Goat anti-mouse (H+L), HRP conj.	1 mg	G21040
Goat anti-rabbit (H+L), HRP conj.	1 mg	G21234
Goat anti-mouse (H+L), AP conj.	1 mg	G21060
Goat anti-rabbit (H+L), AP conj.	1 mg	G21079
Nitrocellulose, 0.2 µm	20/pack	LC2000



**Figure 2** Indirect ELISA of STAT5a [pY694] ABfinity™ Recombinant Rabbit Monoclonal Antibody (Cat. no. 701063). Indirect ELISA was performed using various dilutions of STAT5a [pY694] ABfinity™ Recombinant Rabbit Monoclonal Antibody (Cat. no. 701063) to detect phospho STAT5a [pY694] peptide coated onto the plate. A non-linear regression analysis was performed (4 PL) and LOD and LOQ for the antibody was determined.

### Explanation of symbols

Symbol	Description	Symbol	Description
	Catalogue Number		Batch code
	Research Use Only		<i>In vitro</i> diagnostic medical device
	Use by		Temperature limitation
	Manufacturer		European Community authorised representative
	Without, does not contain		With, contains
	Protect from light		Consult accompanying documents
	Directs the user to consult instructions for use (IFU), accompanying the product.		

## Limited Use Label License: Research Use Only

The purchase of this product conveys to the purchaser the limited, non-transferable right to use the purchased amount of the product only to perform internal research for the sole benefit of the purchaser. No right to resell this product or any of its components is conveyed expressly, by implication, or by estoppel. This product is for internal research purposes only and is not for use in commercial applications of any kind, including, without limitation, quality control and commercial services such as reporting the results of purchaser's activities for a fee or other form of consideration. For information on obtaining additional rights, please contact [outlicensing@lifetech.com](mailto:outlicensing@lifetech.com) or Out Licensing, Life Technologies, 5791 Van Allen Way, Carlsbad, California 92008.

©2011 Life Technologies Corporation. All rights reserved. The trademarks mentioned herein are the property of Life Technologies Corporation or their respective owners.

For support visit [www.invitrogen.com/support](http://www.invitrogen.com/support) or email [techsupport@invitrogen.com](mailto:techsupport@invitrogen.com)

[www.lifetechnologies.com](http://www.lifetechnologies.com)

**life**  
technologies™