

Syntaxin PEP12 (Yeast) ABfinity™



Recombinant Rabbit Monoclonal Antibody - Purified

Catalog no. 700689

(See product label for lot information)

Clone/PAD: 7H24L3
Isotype: IgG
Gene ID: 854201
Protein Acc. no.: P32854
Qty: 100 µg
Volume: 200 µL
Concentration: 0.5 mg/mL

Formulation

PBS + 0.09% sodium azide

Application

For use in Western Blotting

Reactivity

This antibody is specific for Yeast Syntaxin/PEP12.

Immunogen

Protein corresponding to amino acids 1–268 of yeast Syntaxin

Sequence Identity

Yeast

Storage

2–8°C for up to 1 month, –20°C for long term storage. Avoid repeated freezing and thawing.

Expiration Date

Expires one year from date of receipt when stored as instructed.

Background

Syntaxins belong to a family of SNARE proteins (1). The yeast *Saccharomyces cerevisiae* has about 7 genes similar to syntaxin and there are presently 15 types of syntaxin genes in the human genome. In presence of other cytoplasmic proteins like the N-ethylmaleimide-sensitive factor (NSF) and SNAP; syntaxins can combine various vesicular transport systems for the exocytic and endocytic pathway. This is very important for the functioning and for bringing about specificity to the vesicular combination process. (2). The syntaxin protein in yeast is also known as the Pep12 protein. The function of this Pep12 protein in the yeast is to transport vesicles from the Golgi apparatus.

References

1. Bennett MK, García-Arrarás JE, Elferink LA, Peterson K, Fleming AM, Hazuka CD, Scheller RH. The syntaxin family of vesicular transport receptors. 1993 Cell 74 (5): 863–73
2. Felicia Yu Hsuan Teng, Ya Wang and Bor Luen Tang. The syntaxins. 2001. Genome Biology Reviews3012.1–reviews3012.7
3. D C Bassham, S Gal, A da Silva Conceição, and N V Raikhel. An Arabidopsis syntaxin homologue isolated by functional complementation of a yeast pep12 mutant.1995. Proceedings of the National Academy of Sciences U S A. 92(16): 7262–7266.

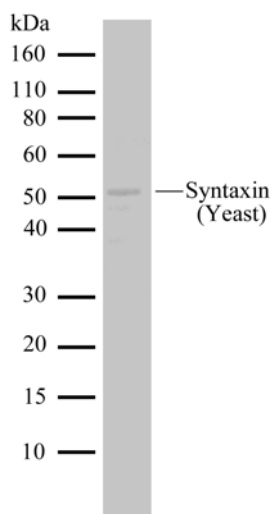
Applications:

	Species	Test Material	Concentration
Western Blotting	Yeast	Recombinant Yeast Syntaxin + Fusion tag	0.1–1 µg/mL

For Research Use Only. CAUTION: Not for human or animal therapeutic or diagnostic use.

www.invitrogen.com

Invitrogen Corporation • 7335 Executive Way • Frederick • MD 21704 • Tel: 800.955.6288 • E-mail: techsupport@invitrogen.com



Western Blot of Syntaxin (Yeast) labeled with Syntaxin (Yeast) Rabbit Recombinant Monoclonal Antibody (Cat. no. 700689).

Syntaxin (Yeast) Rabbit Recombinant Monoclonal Antibody (1 µg/mL) was used to detect a recombinant Syntaxin (Yeast) fusion protein (1 ng/lane). The western was performed using the WesternBreeze® kit with NBT/BCIP as the substrate (Cat. no. WB7105).

Explanation of symbols

Symbol	Description	Symbol	Description
	Catalogue Number		Batch code
	Research Use Only		<i>In vitro</i> diagnostic medical device
	Use by		Temperature limitation
	Manufacturer		European Community authorised representative
	Without, does not contain		With, contains
	Protect from light		Consult accompanying documents
	Directs the user to consult instructions for use (IFU), accompanying the product.		

Limited Use Label License: Research Use Only

The purchase of this product conveys to the purchaser the limited, non-transferable right to use the purchased amount of the product only to perform internal research for the sole benefit of the purchaser. No right to resell this product or any of its components is conveyed expressly, by implication, or by estoppel. This product is for internal research purposes only and is not for use in commercial applications of any kind, including, without limitation, quality control and commercial services such as reporting the results of purchaser's activities for a fee or other form of consideration. For information on obtaining additional rights, please contact outlicensing@lifetech.com or Out Licensing, Life Technologies, 5791 Van Allen Way, Carlsbad, California 92008.

©2011 Life Technologies Corporation. All rights reserved. The trademarks mentioned herein are the property of Life Technologies Corporation or their respective owners.

For Research Use Only. CAUTION: Not for human or animal therapeutic or diagnostic use.

www.invitrogen.com

Invitrogen Corporation • 7335 Executive Way • Frederick • MD 21704 • Tel: 800.955.6288 • E-mail: techsupport@invitrogen.com