

# erbB-2 [pY1248] ABfinity™ Recombinant Rabbit Monoclonal Antibody - Purified

Catalog no. 700635

(See product label for lot information)



**Clone/PAD:** 40H87L57  
**Isotype:** IgG  
**Gene ID:** 2064  
**Protein Acc. no.:** P04626  
**Qty:** 100 µg  
**Volume:** 200 µl  
**Concentration:** 0.5 mg/mL

## Formulation

PBS + 0.09% sodium azide

## Validation

See [www.invitrogen.com/antibodies](http://www.invitrogen.com/antibodies) for protocols

Validated for use in WB

## Reactivity

This antibody is specific for pY1248 and does not recognize non-phosphorylated erbB-2 protein.

## Immunogen

peptide

## Immunogen sequence

TAENPE[pY]LGLDVPV

## Sequence Identity

human, mouse, rat, rhesus monkey, feline, canine, frog, chicken

## Sequence Homology

N/A

## Expected Reactivity

Based on sequence identity and similarity, reactivity to human, mouse, rat, rhesus monkey, feline, canine, frog, chicken and is expected.

## Storage

2-8°C for up to 1mo, -20°C for long term storage. Avoid repeated freezing and thawing.

## Expiration Date

Expires one year from date of receipt when stored as instructed.

## Background

ERBB2, a 185 kDa transmembrane protein, is one of four ERBB receptor tyrosine kinases belonging to the Epidermal Growth Factor Receptor (EGFR) family (1). These receptor tyrosine kinases play an important role during cardiovascular and nervous system development (2-3). In both cardiovascular and nervous system development, cell communication and signaling require ERBB family proteins and overexpression of ERBB2 has been found in a variety of human cancer models (2-3). ERBB receptor tyrosine kinases have an extracellular domain involved in ligand binding and receptor homo- or heterodimerization (1). ERBB2 has also been shown to be the preferred receptor for heterodimerization with the other three ERBB proteins (1).

## References

- Birchmeier C (2009) ErbB receptors and the development of the nervous system. *Exp Cell Res.* 4: 611-18.  
Muthuswamy SK et al (1999) Controlled dimerization of ErbB receptor provides evidence for differential signaling by homo- and heterodimers. *Mol Cell Biol.* 10: 6485-57.  
Pentassuglia L and Sawyer DB (2009) The role of Neuregulin-1beta/ErbB signaling in the heart. *Exp Cell Res.* 4: 627-37.

## Applications:

	Species	Test Material	Concentration
Western Blotting	human	A431+EGF	2.0 µg/ml
Immunoprecipitation			Not Tested
Immunohistochemistry			Not Tested
Immunofluorescence			Not Recommended
Flow Cytometry			Not Tested
ELISA			Not Tested

**For research use only. CAUTION: Not for human or animal therapeutic or diagnostic use.**

[www.invitrogen.com](http://www.invitrogen.com)

Invitrogen Corporation • 542 Flynn Rd • Camarillo • CA 93012 • Tel: 800.955.6288 • E-mail: [techsupport@invitrogen.com](mailto:techsupport@invitrogen.com)

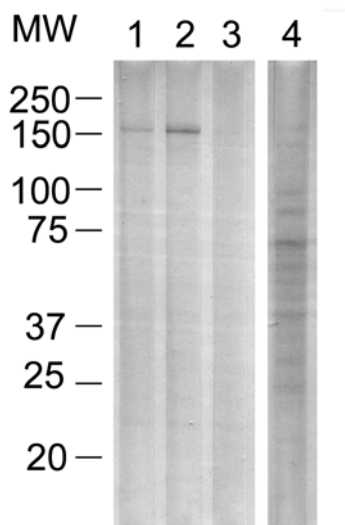
This antibody is manufactured under a licensed process covered by Patent # 5, 599, 681.

PI700635 (Rev 04/10) DCC-10-1156

Page 1 of 2

FORM-00089 (Rev. 0.0)

**Important Licensing Information** - These products may be covered by one or more Limited Use Label Licenses (see the Invitrogen Catalog or our website, [www.invitrogen.com](http://www.invitrogen.com)). By use of these products you accept the terms and conditions of all applicable Limited Use Label Licenses. Unless otherwise indicated, these products are for research use only and are not intended for human or animal diagnostic, therapeutic or commercial use.



**Western blot of A431+EGF cell lysates labeled with rabbit anti-erbB-2 [pY1248] (Cat. No. 700044).**

Rabbit anti-erbB-2 [pY1248] was used at 2 ug/ml to detect erbB-2 [pY1248] in A431 cell lysates. Lysates were from untreated (lane 4) or treated cells that were serum starved overnight before addition of 200 ng/mL EGF for 30 minutes (lanes 1-3). The antibody was preincubated with the non-phosphopeptide (2) or the phosphopeptide (3) before detection of erbB-2 [pY1248] in treated lysate.

#### Explanation of symbols

Symbol	Description	Symbol	Description
	Catalogue Number		Batch code
	Research Use Only		<i>In vitro</i> diagnostic medical device
	Use by		Temperature limitation
	Manufacturer		European Community authorised representative
	Without, does not contain		With, contains
	Protect from light		Consult accompanying documents
	Directs the user to consult instructions for use (IFU), accompanying the product.		

**For research use only. CAUTION: Not for human or animal therapeutic or diagnostic use.**

[www.invitrogen.com](http://www.invitrogen.com)

Invitrogen Corporation • 542 Flynn Rd • Camarillo • CA 93012 • Tel: 800.955.6288 • E-mail: [techsupport@invitrogen.com](mailto:techsupport@invitrogen.com)

This antibody is manufactured under a licensed process covered by Patent # 5, 599, 681.