

SAA1 ABfinity™ Recombinant Rabbit Monoclonal Antibody - Purified

Catalog no. 700830

(See product label for lot information)



Clone/PAD: D9H4L41
Isotype: IgG
Gene ID: 20208
Protein Acc. no.: P05366
Qty: 100 µg
Volume: 200 µl
Concentration: 0.5 mg/mL

Formulation

PBS + 0.09% sodium azide

Validation

See www.invitrogen.com/antibodies for protocols

Validated for use in WB

Immunogen

recombinant protein

Reactivity

mouse

Storage

2-8°C for up to 1 month, -20°C for long term storage. Avoid repeated freezing and thawing.

Expiration Date

Expires one year from date of receipt when stored as instructed.

Background

Serum amyloid A (SAA) proteins comprise a family of small (12-14 kDa, 104-112 amino acid residues), differentially expressed proteins that are highly conserved among vertebrates. SAA proteins are involved in the acute phase responses; these are the immediate early host responses to inflammation. During the acute phase, circulating SAA levels are increased by 100-1000 fold, reaching concentrations of up to one milligram per milliliter. Liver is the major site of SAA synthesis, although extrahepatic expression has also been reported. Mouse SAA gene family maps to chromosome 7. In mouse, five SAA genes and four protein products have been identified: mouse SAA1, SAA2, SAA3 are the acute phase isoforms, SAA5 is constitutively expressed, and SAA4 is a pseudogene. SAAs belong to a category of acute phase proteins that also includes C-reactive protein (CRP), haptoglobin, ceruloplasmin, complement components C3 and C4, a1-acid glycoprotein, a1-proteinase inhibitor, and fibrinogen (1-3).

References

1. He, R., et al. (2003) Serum amyloid A induces IL-8 secretion through a G protein-coupled receptor, FPRL1/LXA4R. *Blood* 101(4):1572-1581.
2. Kushner, I. (1988) The acute phase response: An overview. *Meth. Enzymol.* 163:373-383.
3. Kindy, M.S., et al. (2000) Expression of mouse acute-phase (SAA1.1) and constitutive (SAA4) serum amyloid A isotypes. *Arterioscler. Thromb. Vasc. Biol.* 20:1543-1550.

Applications:

Following applications had been tested during development. To make sure the consistency and reliability in the future lots, each lot is tested with antigen ELISA for specificity and potency. Each lot is also tested with SDS-PAGE, to ensure high purity.

	Species	Test Material	Concentration
Western Blotting	mouse	mouse spleen + LPS	2-5 µg/ml

For Research Use Only. CAUTION: Not for human or animal therapeutic or diagnostic use.

www.invitrogen.com

Invitrogen Corporation • 542 Flynn Rd • Camarillo • CA 93012 • Tel: 800.955.6288 • E-mail: techsupport@invitrogen.com

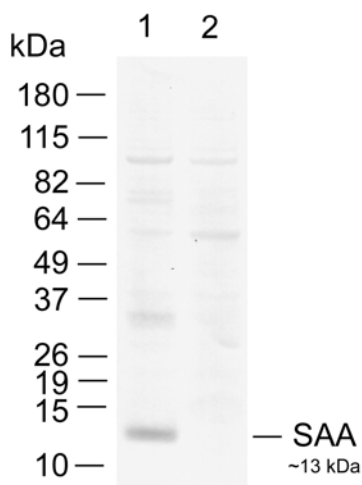
This antibody is manufactured under a licensed process covered by Patent # 5, 599, 681.

PI700830 (DCC-10-1787) Rev 07/10

Page 1 of 2

FORM-00089 (Rev 0.0)

Important Licensing Information - These products may be covered by one or more Limited Use Label Licenses (see the Invitrogen Catalog or our website, www.invitrogen.com). By use of these products you accept the terms and conditions of all applicable Limited Use Label Licenses. Unless otherwise indicated, these products are for research use only and are not intended for human or animal diagnostic, therapeutic or commercial use.



Western blot of LPS treated mouse tissue lysates labeled with rabbit anti-SAA (Cat. No. 700830).

Rabbit anti-SAA was used at 2.5 µg/ml to detect the mouse SAA protein in LPS treated mouse spleen lysate (30 µg/lane). The western was performed using the WesternBreeze® kit with NBT/BCIP as the substrate (Cat. No. WB7105).

Explanation of symbols

Symbol	Description	Symbol	Description
	Catalogue Number		Batch code
	Research Use Only		<i>In vitro</i> diagnostic medical device
	Use by		Temperature limitation
	Manufacturer		European Community authorised representative
	Without, does not contain		With, contains
	Protect from light		Consult accompanying documents
	Directs the user to consult instructions for use (IFU), accompanying the product.		

For Research Use Only. CAUTION: Not for human or animal therapeutic or diagnostic use.

www.invitrogen.com

Invitrogen Corporation • 542 Flynn Rd • Camarillo • CA 93012 • Tel: 800.955.6288 • E-mail: techsupport@invitrogen.com

This antibody is manufactured under a licensed process covered by Patent # 5, 599, 681.