

ZO-1, Mouse Monoclonal Antibody - Alexa Fluor® 594

Catalog no. 339194

(See product label for lot information)

Product Description

100 µg monoclonal antibody conjugated to Alexa Fluor® 594.

Clone/PAD: ZO1-1A12
Isotype: Mouse IgG1, k
Qty: 100 µg
Volume: 200 µL

Formulation

Supplied as a 200 µL aliquot at a concentration of 0.5 mg/mL in PBS, pH 7.4, containing 0.1% sodium azide, and 4mg/mL BSA.

Purification Method

This monoclonal antibody is highly purified from mouse ascites by protein A chromatography, before conjugation.

Applications

See www.invitrogen.com/antibodies for protocols

Immunofluorescence: 5-10 µg/mL

ELISA⁽¹⁾: 0.1-1.0 µg/mL (Un-conjugated)

Western Blotting⁽¹⁾: 1-2 µg/mL (Un-conjugated)

Each lot of this antibody is tested for specificity by immunofluorescence.

Reactivity

Species reactivity includes human (Caco-2 Cell line) and dog (MDCK cell line). Based on sequence homology, reactivity with other species is likely but has not been confirmed.

Specificity

This monoclonal antibody detects ZO-1α+ and ZO-1α- isoforms. The antibody is specific for ZO-1 proteins; cross-reactivity with the related ZO-2 protein has not been observed.

Immunogen

Human recombinant ZO-1 fusion protein encompassing amino acids 334-634.

Storage

Store reagents at 2-8°C. Light exposure should be avoided.

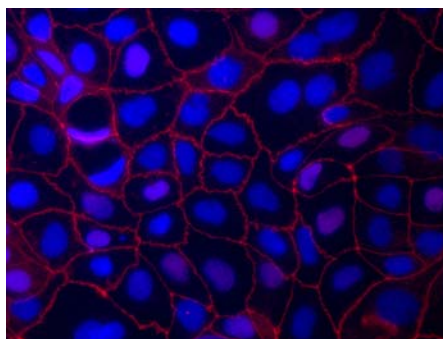
Expiration Date

Expires one year from date of receipt when stored as instructed.

Catalog No.	Conjugation	EX (nm)	EM (nm)
339100	Un-conjugated	- -	- -
339111	FITC	494	520
339188	Alexa 488®	495	519
339194	Alexa 594®	590	617

Background

Tight junctions (or zonula occludens) are selective, semi-permeable barriers in the paracellular pathway of vertebrate endothelia and epithelia. Tight junctions also serve to physically separate functionally and biochemically distinct regions of the plasma membrane that exist in distinct physiological compartments.⁽²⁾ ZO-1, ZO-2 and occludin are major components of vertebrate tight junctions. ZO-1 is a peripheral (non-transmembrane) membrane protein found on the cytoplasmic leaflet of tight junctions. ZO-1 has a MW of 225 kDa and is found in two isoforms that differ by the presence or absence of an 80 amino acid region known as 'motif-a'⁽³⁾ and constitutes a basis for classifying tight junctions.⁽⁴⁾ ZO-1 is homologous to the dlg (discs-large) protein of Drosophila and the C. elegans lin-2 gene product. Loss of dlg results in neoplastic overgrowth of imaginal discs and loss of epithelial apical/basal polarity. ZO-1 and the interacting protein ZO-2 are members of a family of putative signal transduction proteins (MAGUK) whose members contain an SH3 domain, a domain with homology to guanylate kinases and a PDZ domain (potential mediator of protein-protein interaction) found in many synapse-associated proteins.^(5,6)



Immunofluorescence: ZO-1, Mouse Monoclonal Antibody - Alexa Fluor® 594: Catalog No. 339194

Human Caco-2 cells stained with ZO-1, Mouse Monoclonal Antibody - Alexa Fluor® 594 (Cat.No. 339194). DNA is counter stained with blue Hoechst 33258 (Cat. No H3569). For high resolution colored figure, please visit the product page online.

References

1. Penes, M., Eur J Neurosci 22:404-418 (2005).
2. Gumbiner, B.M., Cell 84:345-357 (1996).
3. Willott, E. et al., Am J Physiol. 262(5 Pt 1):C1119-24 (1992).
4. Balda, M.S. and Anderson, J.M., Am J Physiol. 264(4 Pt 1):C918-24 (1993).
5. Willott, E. et al., PNAS, USA 90:7834-7838 (1993).
6. Nagano, T., J. Biochem (Tokyo), 124:869-875 (1998).

Explanation of symbols			
Symbol	Description	Symbol	Description
	Catalogue Number		Batch code
	Research Use Only		In vitro diagnostic medical device
	Use by		Temperature limitation
	Manufacturer		European Community authorised representative
	Without, does not contain		With, contains
	Protect from light		Consult accompanying documents
	Directs the user to consult instructions for use (IFU), accompanying the product.		

For research use only. CAUTION: Not intended for human or animal therapeutic or diagnostic use.

www.invitrogen.com

Invitrogen Corporation • 542 Flynn Rd • Camarillo • CA 93012 • Tel: 800.955.6288 • E-mail: techsupport@invitrogen.com

This antibody is manufactured under a licensed process covered by Patent # 5, 599, 681.

PI339194 (Rev 05/10) DCC-10-1553

Page 1 of 1

FORM-00089 (Rev 0.1)

Important Licensing Information - These products may be covered by one or more Limited Use Label Licenses (see the Invitrogen Catalog or our website, www.invitrogen.com). By use of these products you accept the terms and conditions of all applicable Limited Use Label Licenses. Unless otherwise indicated, these products are for research use only and are not intended for human or animal diagnostic, therapeutic or commercial use.