



**Rabbit (polyclonal)  
Anti-PKC $\gamma$  [pT<sup>514</sup>]  
Phosphospecific Antibody, Unconjugated**

**PRODUCT ANALYSIS SHEET**

<b>Catalog Number/Size:</b>	44-956 (10 blot size)
<b>Lot Number:</b>	See product label
<b>Volume/Concentration:</b>	See product label
<b>Form of Antibody:</b>	Rabbit polyclonal immunoglobulin in Dulbecco's phosphate buffered saline (without Mg <sup>2+</sup> and Ca <sup>2+</sup> ), pH 7.3 (+/- 0.1), with 1.0 mg/mL BSA (IgG, protease free) as a carrier.
<b>Preservative:</b>	0.05% sodium azide (Caution: sodium azide is a poisonous and hazardous substance. Handle with care and dispose of properly.)
<b>Purification:</b>	Purified from rabbit serum by sequential epitope-specific chromatography. The antibody has been negatively preadsorbed using a non-phosphopeptide corresponding to the site of phosphorylation to remove antibody that is reactive with non-phosphorylated PKC $\gamma$ . The final product is generated by affinity chromatography using a PKC $\gamma$ -derived peptide that is phosphorylated at threonine 514.
<b>Immunogen:</b>	The antiserum was produced against a chemically synthesized phosphopeptide derived from a region of human PKC $\gamma$ that contains threonine 514.
<b>Target Summary:</b>	PKC $\gamma$ is an 80 kDa member of the conventional group (cPKCs: sensitive to calcium, diacylglycerol and phorbol esters) of the PKC family of serine/threonine family kinases that are involved in a wide range of physiological processes including mitogenesis, cell survival and transcriptional regulation. PKC $\gamma$ plays a key role in neuronal signal transduction and is translocated from the nucleus to the cytoplasm upon activation by phorbol ester, where in epithelial cells it has been implicated in regulating intracellular communication. The activation loop threonine (threonine 514 in PKC $\gamma$ ) of conventional PKCs is phosphorylated by phosphoinositide-dependent kinase-1 (PDK1), which is necessary for their autophosphorylation, a critical step in the generation of a catalytically mature enzyme.
<b>Reactivity:</b>	Human PKC $\gamma$ . Mouse and rat (88% homologous) PKC $\gamma$ have not been tested, but are expected to react. PKC $\alpha$ , $\iota$ , $\zeta$ (75%), $\beta$ I, $\beta$ II, $\epsilon$ and $\eta$ (63%) may cross-react in cells expressing high levels of these proteins.
<b>Applications:</b>	The antibody has been used for Western blotting applications.
<b>Suggested Working Dilutions:</b>	For Western blotting applications, we recommend using the antibody at 0.5-1.0 $\mu$ g/mL. At 0.50 $\mu$ g/mL, the dilution provides 100 mL working solution, which at 10 mL/blot allows 10 blots to be performed. The optimal antibody concentration should be determined empirically for each specific application.
<b>Storage:</b>	Store at -80°C. Upon initial thawing, apportion into working aliquots and store at -80°C. Avoid repeated freeze-thaw cycles to prevent denaturing the antibody.
<b>Expiration Date:</b>	Expires one year from date of receipt when stored as instructed.
<b>Positive Control Used:</b>	HeLa cells treated with PMA, a phorbol ester.

**For research use only. CAUTION: Not intended for human or animal therapeutic or diagnostic use.**

[www.invitrogen.com](http://www.invitrogen.com)

Invitrogen Corporation • 542 Flynn Rd • Camarillo • CA 93012 • Tel: 800.955.6288 • E-mail: [techsupport@invitrogen.com](mailto:techsupport@invitrogen.com)  
This antibody is manufactured under a licensed process covered by Patent # 5, 599, 681.

PI44956

(Rev 09/09) DCC-09-1137

**Important Licensing Information** - These products may be covered by one or more Limited Use Label Licenses (see the Invitrogen Catalog or our website, [www.invitrogen.com](http://www.invitrogen.com)). By use of these products you accept the terms and conditions of all applicable Limited Use Label Licenses. Unless otherwise indicated, these products are for research use only and are not intended for human or animal diagnostic, therapeutic or commercial use.

**Related Products:****Antibodies:**PKC $\gamma$  [pT<sup>655</sup>], Cat. # 44-965PKC $\gamma$ , Cat. # AHO0762PKC $\delta$  [pY<sup>311</sup>] (mouse), Cat. # 44-950

PDK1, Cat. # AHZ0512

c-Met [pYpYpY<sup>1230/1234/1235</sup>], Cat. # 44-888G

Pro-Growth Sample Pack, Cat. # 44-587G

**Other:** See also antibodies, substrates and inhibitors to PKCs in the Invitrogen catalog.**References:**

Wagner, L.M., et al. (2002) Effect of protein kinase C $\gamma$  on gap junction disassembly in lens epithelial cells and retinal cells in culture. *Mol. Vis.* 8:59-66.

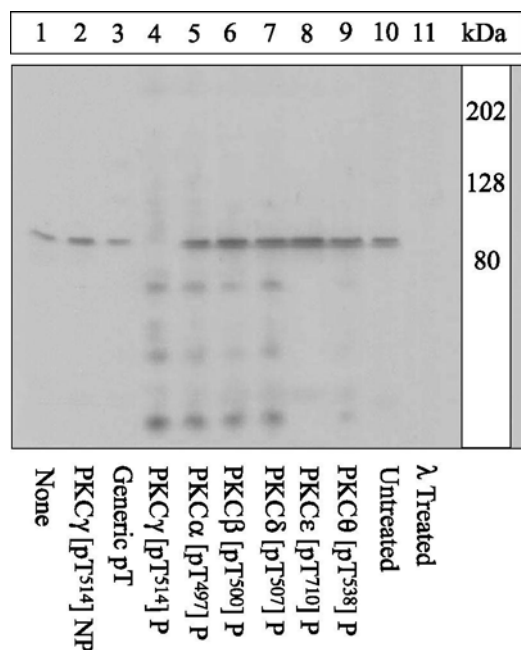
Dutil, E.M., et al. (1998) Regulation of conventional protein kinase C isozymes by phosphoinositide-dependent kinase 1 (PDK-1). *Curr. Biol.* 8(25):1366-1375.

Toker, A. (1998) Signaling through protein kinase C. *Front. Biosci.* 3:D1134-D1147.

Machide, M., et al. (1998) Selective activation of phospholipase C  $\gamma$ 1 and distinct protein kinase C subspecies in intracellular signaling by hepatocyte growth factor/scatter factor in primary cultured rat neocortical cells. *J. Neurochem.* 71(2):592-602.

Battaini, F., et al. (1995) Protein kinase C activity, translocation, and conventional isoforms in aging rat brain. *Neurobiol. Aging* 16(2):137-148.

Quest, A.F. and R.M. Bell (1994) The regulatory region of protein kinase C $\gamma$ . Studies of phorbol ester binding to individual and combined functional segments expressed as glutathione S-transferase fusion proteins indicate a complex mechanism of regulation by phospholipids, phorbol esters, and divalent cations. *J. Biol. Chem.* 269(31):20000-20012.

**Peptide Competition and Phosphatase treatment**

Lysates prepared from HeLa cells stimulated with PMA were resolved by SDS-PAGE on a 10% polyacrylamide gel and transferred to PVDF. Membranes were either left untreated (1-10) or treated with lambda ( $\lambda$ ) phosphatase (11), blocked with a 3% low-fat milk-TBST buffer overnight at 4°C, and incubated with 0.50  $\mu$ g/mL PKC $\gamma$  [pT<sup>514</sup>] antibody for two hours at room temperature in a 3% BSA-TBST buffer, following prior incubation with: no peptide (1, 10, 11), the non-phosphopeptide corresponding to the immunogen (2), a generic phosphothreonine containing peptide (3), the phosphopeptide immunogen (4), or, the phosphopeptide corresponding to the immunogen from other PKC isoforms (5-9). After washing, membranes were incubated with goat F(ab')<sub>2</sub> anti-rabbit IgG alkaline phosphatase (Cat. # ALI4405) and signals were detected using the Tropix WesternStar<sup>TM</sup> method.

The data show that the peptide corresponding to PKC $\gamma$  [pT<sup>514</sup>] blocks the antibody signal and that the peptides corresponding to PKC isoforms  $\alpha$  [pT<sup>497</sup>],  $\beta$ I&II [pT<sup>500</sup>],  $\delta$  [pT<sup>507</sup>],  $\epsilon$  [pT<sup>710</sup>] and  $\theta$  [pT<sup>538</sup>] did not block the antibody signal, thereby demonstrating the specificity of the antibody. The data also show that phosphatase stripping eliminates the signal, verifying that the antibody is phospho-specific.

**For research use only. CAUTION: Not intended for human or animal therapeutic or diagnostic use.**

[www.invitrogen.com](http://www.invitrogen.com)

Invitrogen Corporation • 542 Flynn Rd • Camarillo • CA 93012 • Tel: 800.955.6288 • E-mail: [techsupport@invitrogen.com](mailto:techsupport@invitrogen.com)

This antibody is manufactured under a licensed process covered by Patent # 5, 599, 681.

PI44956

(Rev 09/09) DCC-09-1137

**Important Licensing Information** - These products may be covered by one or more Limited Use Label Licenses (see the Invitrogen Catalog or our website, [www.invitrogen.com](http://www.invitrogen.com)). By use of these products you accept the terms and conditions of all applicable Limited Use Label Licenses. Unless otherwise indicated, these products are for research use only and are not intended for human or animal diagnostic, therapeutic or commercial use.

## Western Blotting Procedure

1. Lyse approximately  $10^7$  cells in 0.5 mL of ice cold Cell Lysis Buffer (formulation provided below). This buffer, a modified RIPA buffer, is suitable for recovery of most proteins, including membrane receptors, cytoskeletal-associated proteins, and soluble proteins. This cell lysis buffer formulation is available as a separate product which requires supplementation with protease inhibitors immediately prior to use (Invitrogen catalog number FNN0011). Other cell lysis buffer formulations, such as Laemmli sample buffer and Triton-X 100 buffer, are also compatible with this procedure. Additional optimization of the cell stimulation protocol and cell lysis procedure may be required for each specific application.
2. Remove the cellular debris by centrifuging the lysates at 14,000 x g for 10 minutes. Alternatively, lysates may be ultracentrifuged at 100,000 x g for 30 minutes for greater clarification.
3. Carefully decant the clarified cell lysates into clean tubes and determine the protein concentration using a suitable method, such as the Bradford assay. Polypropylene tubes are recommended for storing cell lysates.
4. React an aliquot of the lysate with an equal volume of 2x Laemmli Sample Buffer (125 mM Tris, pH 6.8, 10% glycerol, 10% SDS, 0.006% bromophenol blue, and 130 mM dithiothreitol [DTT]) and boil the mixture for 90 seconds at 100°C.
5. Load 10-30 µg of the cell lysate into the wells of an appropriate single percentage or gradient minigel and resolve the proteins by SDS-PAGE.
6. In preparation for the Western transfer, cut a piece of PVDF membrane slightly larger than the gel. Soak the membrane in methanol for 1 minute, then rinse with ddH<sub>2</sub>O for 5 minutes.
7. Soak the membrane, 2 pieces of Whatman paper, and Western apparatus sponges in transfer buffer (formulation provided below) for 2 minutes.
8. Assemble the gel and membrane into the sandwich apparatus.
9. Transfer the proteins at 140 mA for 60-90 minutes at room temperature.
10. Following the transfer, rinse the membrane with Tris buffered saline for 2 minutes.
11. Block the membrane with blocking buffer (formulation provided below) overnight at 4°C.
12. Incubate the blocked blot with primary antibody at a concentration of 0.1-1.0 µg/mL in Tris buffered saline supplemented with 3% BSA and 0.1% Tween 20 for 2 hours at room temperature.
13. Wash the blot with several changes of Tris buffered saline supplemented with 0.1% Tween 20.
14. Detect the antibody band using an appropriate secondary antibody, such as goat F(ab')<sub>2</sub> anti-rabbit IgG alkaline phosphatase conjugate (catalog number ALI4405) or goat F(ab')<sub>2</sub> anti-rabbit IgG horseradish peroxidase conjugate (catalog number ALI4404) in conjunction with your chemiluminescence reagents and instrumentation.

### Cell Lysis Buffer

#### Formulation:

10 mM Tris, pH 7.4  
100 mM NaCl  
1 mM EDTA  
1 mM EGTA  
1 mM NaF  
20 mM Na<sub>4</sub>P<sub>2</sub>O<sub>7</sub>  
2 mM Na<sub>3</sub>VO<sub>4</sub>  
0.1% SDS  
0.5% sodium deoxycholate  
1% Triton-X 100  
10% glycerol  
1 mM PMSF (made from a  
0.3 M stock in DMSO)  
or 1 mM AEBSF (water  
soluble version of PMSF)  
60 µg/mL aprotinin  
10 µg/mL leupeptin  
1 µg/mL pepstatin  
(alternatively, protease inhibitor  
cocktail such as Sigma catalog  
number P2714 may be used)

### Transfer Buffer

#### Formulation:

2.4 gm Tris base  
14.2 gm glycine  
200 mL methanol  
Q.S. to 1 liter, then add  
1 mL 10% SDS.  
Cool to 4°C prior to use.

### Tris Buffered Saline

#### Formulation:

20 mM Tris-HCl, pH 7.4  
0.9% NaCl

### Blocking Buffer

#### Formulation:

100 mL Tris buffered saline  
3 gm low-fat milk  
0.1 mL Tween 20

**For research use only. CAUTION: Not intended for human or animal therapeutic or diagnostic use.**

[www.invitrogen.com](http://www.invitrogen.com)

Invitrogen Corporation • 542 Flynn Rd • Camarillo • CA 93012 • Tel: 800.955.6288 • E-mail: [techsupport@invitrogen.com](mailto:techsupport@invitrogen.com)

This antibody is manufactured under a licensed process covered by Patent # 5, 599, 681.

PI44956

(Rev 09/09) DCC-09-1137

**Important Licensing Information** - These products may be covered by one or more Limited Use Label Licenses (see the Invitrogen Catalog or our website, [www.invitrogen.com](http://www.invitrogen.com)). By use of these products you accept the terms and conditions of all applicable Limited Use Label Licenses. Unless otherwise indicated, these products are for research use only and are not intended for human or animal diagnostic, therapeutic or commercial use.

### Peptide Competition Experiment

To demonstrate the specificity of a Phosphorylation Site Specific Antibody, we recommend the following peptide competition experiment which uses our control peptides. These control peptides have the sequences of the phosphopeptide immunogen used to raise the antibody and the corresponding non-phosphorylated peptide. In the competition experiment, 200-500 fold molar excess of the phosphorylated and non-phosphorylated peptides are pre-incubated with aliquots of the antibody prior to use in immunoassay procedures.

A sample calculation for the determination of the 200 fold molar excess of peptide to antibody is presented below. The following assumptions have been made:

- The molecular mass of an IgG molecule is 150,000 daltons.
- Each mole of antibody binds two moles of peptide.
- The Phosphorylation Site Specific Antibody is used at a concentration of 0.5 µg/mL.

The optimal antibody concentration for use in peptide competition experiments is below saturating as determined by previous experiments in your system. If an optimal concentration has not been determined, it is suggested that the concentration provided on the antibody Product Analysis Sheet be used. A final antibody concentration of 0.5 µg/mL is satisfactory for most applications.

The molarity of the 0.5 µg/mL antibody solution is:

$$(0.5 \mu\text{g/mL})(1000 \text{ mL/L})/(150,000 \mu\text{g}/\mu\text{mole}) = 0.00333 \mu\text{M}.$$

Because each mole of antibody binds two moles of peptide, 0.5 µg/mL antibody can bind 0.00667 µM of peptide.

A 200 fold molar excess of peptide is  $(200)(0.00667 \mu\text{M}) = 1.334 \mu\text{M}$ .

The following procedure describes peptide competition experiments using antibody at a concentration of 0.5 µg/mL and a 200 fold molar excess of peptides based on the calculation above, in a total volume of 2 mL.

### Procedure:

1. Prepare three identical test samples, such as identical nitrocellulose or PVDF strips with transferred protein. The test samples should be blocked with BSA or non-fat dried milk in a buffer compatible with an antibody based detection method, such as Tris buffered saline or phosphate buffered saline.
2. Slowly thaw the Phosphorylation Site Specific Antibody on ice.
3. Prepare 3 mL of a 2x (1 µg/mL) antibody stock solution in a buffer appropriate for the application. Suggested buffer formulations are TBS or PBS supplemented with blocking protein such as BSA or non-fat dried milk.
4. Apportion the unused Phosphorylation Site Specific Antibody into working aliquots and store at -80°C for future use.
5. The lyophilized control peptides should be warmed to room temperature, ideally under desiccation.
6. Reconstitute each of the control peptides to a concentration of 100 µM using nanopure water at room temperature. As indicated on the peptide labels, each vial contains 0.1 mg. For a peptide with a molecular mass of 1500, reconstitution with 0.67 mL water yields a solution with a concentration of 100 µM.
7. Allow the peptides to dissolve at room temperature, then gently triturate several times using a pipette. Avoid introducing air bubbles.
8. Label 3 test tubes as follows:
  - tube 1: water only no peptide control
  - tube 2: phosphopeptide
  - tube 3: non-phosphopeptide
9. Prepare 2x peptide stock solutions (2.66 µM) or water control by pipetting the following:
  - tube 1: water control stock: 0.973 mL buffer (TBS or PBS plus blocking protein) plus 27 µL water.
  - tube 2: phosphopeptide 2x stock: 0.973 mL buffer (TBS or PBS plus blocking protein) plus 27 µL reconstituted (100 µM) phosphopeptide.
  - tube 3: non-phosphopeptide 2x stock: 0.973 mL buffer (TBS or PBS plus blocking protein) plus 27 µL reconstituted (100 µM) non-phosphopeptide.
10. Apportion unused reconstituted peptide solutions into working aliquots and store at -20°C for future use.
11. Pipette 1 mL of the 2x antibody stock into each of the tubes marked 1, 2, and 3. The tubes should be incubated for 30 minutes at room temperature with gentle rocking.
12. The pre-incubated antibody in each of the three tubes is then ready for use. Pipette the contents of each tube onto the three identical test samples.  
For Western blotting strips:
  - ◆ Incubate these strips for 2 hours at room temperature, followed by several washes to remove unbound antibody.
  - ◆ Transfer each strip to a new solution containing a labeled secondary antibody (example goat anti-rabbit IgG-alkaline phosphatase conjugate).
  - ◆ Remove unbound secondary antibody by thorough washing and develop bands.

The signals obtained with antibody incubated with “(1) water only no peptide control”, which represents the maximum signal, and the signals obtained with “(2) phosphopeptide and “(3) non-phosphopeptide” are readily compared under these conditions.

**For research use only. CAUTION: Not intended for human or animal therapeutic or diagnostic use.**

[www.invitrogen.com](http://www.invitrogen.com)

Invitrogen Corporation • 542 Flynn Rd • Camarillo • CA 93012 • Tel: 800.955.6288 • E-mail: [techsupport@invitrogen.com](mailto:techsupport@invitrogen.com)

This antibody is manufactured under a licensed process covered by Patent # 5, 599, 681.

PI44956

(Rev 09/09) DCC-09-1137

**Important Licensing Information** - These products may be covered by one or more Limited Use Label Licenses (see the Invitrogen Catalog or our website, [www.invitrogen.com](http://www.invitrogen.com)). By use of these products you accept the terms and conditions of all applicable Limited Use Label Licenses. Unless otherwise indicated, these products are for research use only and are not intended for human or animal diagnostic, therapeutic or commercial use.