

Technical Data Sheet

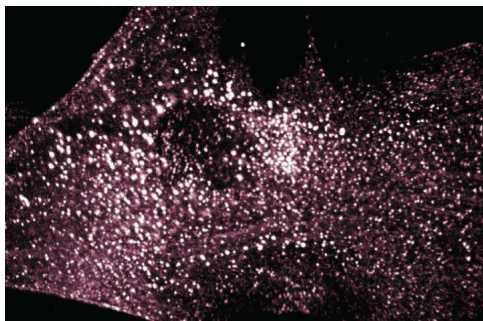
FITC Mouse Anti-Human EEA1**Product Information**

Material Number:	612007
Size:	150 µg
Concentration:	250 µg/ml
Clone:	14/EEA1
Immunogen:	Human EEA1 aa. 3-281
Isotype:	Mouse IgG1
Reactivity:	QC Testing: Human
Storage Buffer:	Aqueous buffered solution containing BSA, glycerol, and ≤0.09% sodium azide.

Description

Early endosomes are a major cytoplasmic sorting compartment from which receptors and ligands may be distributed to various sites within the cell. Early endosome antigen 1 (EEA1) is a 180 kDa hydrophilic peripheral membrane protein present in cytosol and membrane fractions. Immunofluorescence studies show that EEA1 colocalizes to early endosomes with transferrin receptor and Rab5, but not with the late endosome-localizing Rab7. EEA1 is predominantly α -helical and shares 17-20% sequence identity with the myosins. It contains a calmodulin-binding IQ motif and metal-binding cysteine "finger" motifs. It is thought that EEA1 is required for vesicular transport of proteins through early endosomes and that these finger motifs are required for this activity.

This antibody is routinely tested by immunofluorescence microscopy. Other applications were tested at BD Biosciences Pharmingen during antibody development only or reported in the literature.



Immunofluorescence staining of human fibroblasts.

Preparation and Storage

The monoclonal antibody was purified from tissue culture supernatant or ascites by affinity chromatography. The antibody was conjugated with FITC under optimum conditions, and unreacted FITC was removed. Store undiluted at -20° C.

Application Notes**Application**

Immunofluorescence	Routinely Tested
Immunochemistry	Not Recommended
Immunoprecipitation	Not Recommended

Product Notices

1. Since applications vary, each investigator should titrate the reagent to obtain optimal results.
2. Please refer to www.bdbiosciences.com/pharmingen/protocols for technical protocols.
3. Caution: Sodium azide yields highly toxic hydrazoic acid under acidic conditions. Dilute azide compounds in running water before discarding to avoid accumulation of potentially explosive deposits in plumbing.
4. Source of all serum proteins is from USDA inspected abattoirs located in the United States.

BD Biosciences

bdbiosciences.com

United States	Canada	Europe	Japan	Asia Pacific	Latin America/Caribbean
877.232.8995	888.259.0187	32.53.720.550	0120.8555.90	65.6861.0633	55.11.5185.9995

For country-specific contact information, visit bdbiosciences.com/how_to_order/

Conditions: The information disclosed herein is not to be construed as a recommendation to use the above product in violation of any patents. BD Biosciences will not be held responsible for patent infringement or other violations that may occur with the use of our products. Purchase does not include or carry any right to resell or transfer this product either as a stand-alone product or as a component of another product. Any use of this product other than the permitted use without the express written authorization of Becton Dickinson and Company is strictly prohibited.

For Research Use Only. Not for use in diagnostic or therapeutic procedures. Not for resale.

BD, BD Logo and all other trademarks are the property of Becton, Dickinson and Company. ©2006 BD



BD

BD Biosciences

References

Mu FT, Callaghan JM, Steele-Mortimer O, et al. EEA1, an early endosome-associated protein. EEA1 is a conserved alpha-helical peripheral membrane protein flanked by cysteine "fingers" and contains a calmodulin-binding IQ motif. *J Biol Chem*. 1995; 270(22):13503-13511.(Biology)