

## Technical Data Sheet

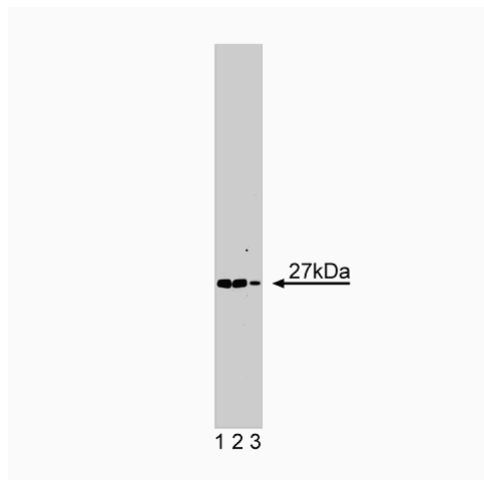
## Purified Mouse Anti-Syntaxin 8

## Product Information

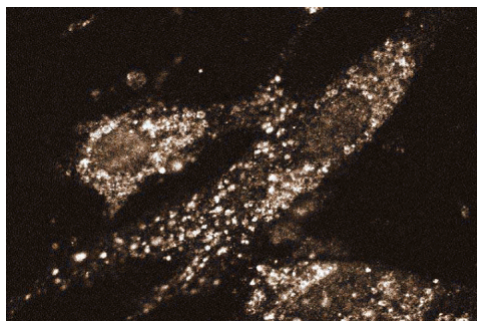
<b>Material Number:</b>	<b>611353</b>
<b>Size:</b>	150 µg
<b>Concentration:</b>	250 µg/ml
<b>Clone:</b>	48/Syntaxin 8
<b>Immunogen:</b>	Mouse Syntaxin 8 aa. 57-164
<b>Isotype:</b>	Mouse IgG2a
<b>Reactivity:</b>	QC Testing: Human Tested in Development: Dog, Rat, Mouse
<b>Target MW:</b>	27 kDa
<b>Storage Buffer:</b>	Aqueous buffered solution containing BSA, glycerol, and ≤0.09% sodium azide.

## Description

Eukaryotic protein trafficking involves the packaging of molecules into membranous vesicles that bud from a donor compartment, travel to a specific destination, fuse, and release their components into an acceptor compartment. Recognition between vesicle and acceptor membrane is mediated by the pairing of the integral membrane SNARE proteins. The stable interaction between vesicle proteins (v-SNAREs) and target proteins (t-SNAREs) juxtaposes the membranes and results in an activated docking state and/or membrane fusion. The syntaxin protein family contains a number of members that serve as functional t-SNAREs. One member of this family, syntaxin 8, has two coiled-coil domains, one in the N-terminus and one toward the C-terminus. The C-terminal domain is homologous to a similar domain in syntaxin 6 and is predicted to interact in the formation of SNARE complexes, while a hydrophobic domain in the C-terminus may be involved in membrane anchoring. Syntaxin-8 is ubiquitously expressed, but is present at high levels in the heart and localizes specifically to the ER. Thus, syntaxin-8 is a t-SNARE that is thought to be involved in the early secretory pathway of many different cell types.



**Western blot analysis of Syntaxin 8 on human endothelial lysate.** Lane 1: 1:1000, lane 2: 1:2000, lane 3: 1:4000 dilution of anti-Syntaxin 8.



**Immunofluorescent staining of WI38 cells.**

## Preparation and Storage

The monoclonal antibody was purified from tissue culture supernatant or ascites by affinity chromatography.

Store undiluted at -20°C.

## Application Notes

## Application

Western blot	Routinely Tested
Immunofluorescence	Tested During Development

## Recommended Assay Procedure:

Western blot: Please refer to [http://www.bdbiosciences.com/pharming/en/protocols/Western\\_Blotting.shtml](http://www.bdbiosciences.com/pharming/en/protocols/Western_Blotting.shtml).

## BD Biosciences

[bdbiosciences.com](http://bdbiosciences.com)

United States	Canada	Europe	Japan	Asia Pacific	Latin America/Caribbean
877.232.8995	888.259.0187	32.53.720.550	0120.8555.90	65.6861.0633	55.11.5185.9995

For country-specific contact information, visit [bdbiosciences.com/how\\_to\\_order/](http://bdbiosciences.com/how_to_order/)

Conditions: The information disclosed herein is not to be construed as a recommendation to use the above product in violation of any patents. BD Biosciences will not be held responsible for patent infringement or other violations that may occur with the use of our products. Purchase does not include or carry any right to resell or transfer this product either as a stand-alone product or as a component of another product. Any use of this product other than the permitted use without the express written authorization of Becton Dickinson and Company is strictly prohibited.

For Research Use Only. Not for use in diagnostic or therapeutic procedures. Not for resale.

BD, BD Logo and all other trademarks are the property of Becton, Dickinson and Company. ©2008 BD



## Suggested Companion Products

Catalog Number	Name	Size	Clone
611450	Human Endothelial Cell Lysate	500 µg	(none)
554002	HRP Goat Anti-Mouse Ig	1.0 ml	(none)
554001	FITC Goat Anti-Mouse Ig	0.5 mg	Polyclonal

## Product Notices

1. Since applications vary, each investigator should titrate the reagent to obtain optimal results.
2. Please refer to [www.bdbiosciences.com/pharmingen/protocols](http://www.bdbiosciences.com/pharmingen/protocols) for technical protocols.
3. Caution: Sodium azide yields highly toxic hydrazoic acid under acidic conditions. Dilute azide compounds in running water before discarding to avoid accumulation of potentially explosive deposits in plumbing.
4. Source of all serum proteins is from USDA inspected abattoirs located in the United States.

## References

Steedmaier M, Yang B, Yoo JS. Three novel proteins of the syntaxin/SNAP-25 family. *J Biol Chem.* 1998; 273(51):34171-34179.(Biology)  
Thoreau V, Bergès T, Callebaut I. Molecular cloning, expression analysis, and chromosomal localization of human syntaxin 8 (STX8). *Biochem Biophys Res Commun.* 1999; 257(2):577-583.(Biology)