

Technical Data Sheet

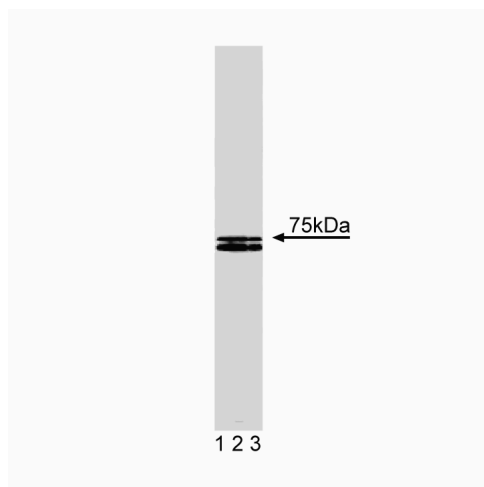
Purified Mouse Anti-Human HS1**Product Information**

Material Number:	610541
Size:	150 µg
Concentration:	250 µg/ml
Clone:	9/HS1
Immunogen:	Human HS1 aa. 17-190
Isotype:	Mouse IgG1
Reactivity:	QC Testing: Human
Target MW:	75 kDa
Storage Buffer:	Aqueous buffered solution containing BSA, glycerol, and ≤0.09% sodium azide.

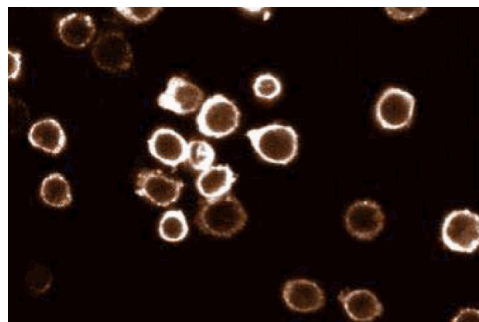
Description

HS1 (lck-binding protein 1 (lckBP1)) is a protein of 486 amino acids with homology to cytoplasmic tyrosine kinases. The protein contains an SH3 domain and two proline-rich regions, that may be the binding site for lck. Co- immunoprecipitation experiments demonstrated a tight association between HS1 and lck. The SH3 domain of lck is necessary for this interaction. In addition, HS1 contains tandem repeat sequence of seven amino acids which is a substrate for the tyrosine kinase src. This sequence is also found in the protein cortactin. Therefore, HS1, like cortactin, may be an important adaptor that is critical for the regulation of cellular tyrosine kinases.

This antibody is routinely tested by western blot analysis. Other applications were tested at BD Biosciences Pharmingen during antibody development only or reported in the literature.



Western blot analysis of HS1 on human endothelial lysate. Lane 1: 1:250, lane 2: 1:500, lane 3: 1:1000 dilution of HS1.



Immunofluorescent staining of HL60 cells with anti-HS1 antibody.

Preparation and Storage

The monoclonal antibody was purified from tissue culture supernatant or ascites by affinity chromatography.

Store undiluted at -20° C.

BD Biosciences

www.bdbiosciences.com

United States	Canada	Europe	Japan	Asia Pacific	Latin America/Caribbean
877.232.8995	888.259.0187	32.53.720.550	0120.8555.90	65.6861.0633	55.11.5185.9995

For country-specific contact information, visit www.bdbiosciences.com/how_to_order/

Conditions: The information disclosed herein is not to be construed as a recommendation to use the above product in violation of any patents. BD Biosciences will not be held responsible for patent infringement or other violations that may occur with the use of our products. Purchase does not include or carry any right to resell or transfer this product either as a stand-alone product or as a component of another product. Any use of this product other than the permitted use without the express written authorization of Becton Dickinson and Company is strictly prohibited.

For Research Use Only. Not for use in diagnostic or therapeutic procedures. Not for resale.

BD, BD Logo and all other trademarks are the property of Becton, Dickinson and Company. ©2007 BD



Application Notes

Application

Western blot	Routinely Tested
Immunofluorescence	Tested During Development
Immunoprecipitation	Not Recommended
Immunohistochemistry	Not Recommended

Suggested Companion Products

Catalog Number	Name	Size	Clone
611450	Human Endothelial Cell Lysate	500 µg	(none)
554002	HRP Goat Anti-Mouse Ig	1.0 ml	(none)
554001	FITC Goat Anti-Mouse Ig	0.5 mg	Polyclonal

Product Notices

1. Since applications vary, each investigator should titrate the reagent to obtain optimal results.
2. Please refer to www.bdbiosciences.com/pharming/en/protocols for technical protocols.
3. Source of all serum proteins is from USDA inspected abattoirs located in the United States.
4. Caution: Sodium azide yields highly toxic hydrazoic acid under acidic conditions. Dilute azide compounds in running water before discarding to avoid accumulation of potentially explosive deposits in plumbing.

References

Fukuda T, Kitamura D, Taniuchi I. Restoration of surface IgM-mediated apoptosis in an anti-IgM-resistant variant of WEHI-231 lymphoma cells by HS1, a protein-tyrosine kinase substrate. *Proc Natl Acad Sci U S A*. 1995; 92(16):7302-7306.(Biology)

Takemoto Y, Furuta M, Li XK, Strong-Sparks WJ, Hashimoto Y. LckBP1, a proline-rich protein expressed in haematopoietic lineage cells, directly associates with the SH3 domain of protein tyrosine kinase p56lck. *EMBO J*. 1995; 14(14):3403-3414.(Biology)

Yamanashi Y, Okada M, Semba T. Identification of HS1 protein as a major substrate of protein-tyrosine kinase(s) upon B-cell antigen receptor-mediated signaling. *Proc Natl Acad Sci U S A*. 1993; 90(8):3631-3635.(Biology)