

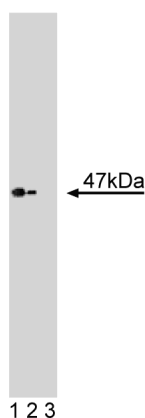
Technical Data Sheet

Purified Mouse Anti-Casein Kinase Iε**Product Information**

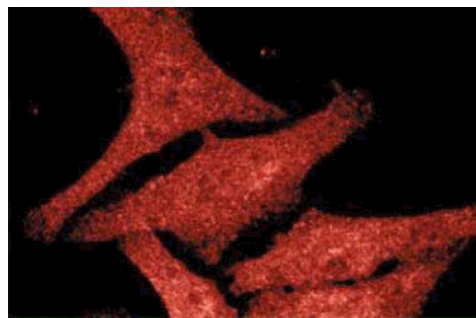
Material Number:	610446
Size:	150 µg
Concentration:	250 µg/ml
Clone:	1/Casein Kinase Iε
Immunogen:	Human Casein Kinase Iε aa. 248-414
Isotype:	Mouse IgG1
Reactivity:	QC Testing: Human Tested in Development: Mouse, Rat, Chicken, Dog
Target MW:	47 kDa
Storage Buffer:	Aqueous buffered solution containing BSA, glycerol, and ≤0.09% sodium azide.

Description

Casein Kinase Iε (CKIε) is a product of a family of proteins involved in the regulation of various cytoplasmic and nuclear processes including DNA replication and repair. CKIε is a 47.3 kDa serine/threonine kinase that plays a role similar to previously described CKI isoforms. It phosphorylates known CKI substrates, including a CKI-specific peptide. In addition, it is inhibited by CKI-7, an inhibitor of other CKI isoforms. CKIε contains a core kinase domain of 285 amino acids which is 53-98% identical to other isoforms and is most similar in structure to CKIδ. Since various human and yeast CKI proteins exhibit both sequence and functional similarities, CKIε may be involved in mammalian DNA metabolism.



Western blot analysis of Casein Kinase Iε on a human endothelial cell lysate. Lane 1: 1:250, lane 2: 1:500, lane 3: 1:1000 dilution of the mouse anti-Casein Kinase Iε antibody.



Immunofluorescence staining of human fibroblast cells stained with the mouse anti-Casein Kinase Iε antibody.

Preparation and Storage

Store undiluted at -20°C.

The monoclonal antibody was purified from tissue culture supernatant or ascites by affinity chromatography.

Application Notes**Application**

Western blot	Routinely Tested
Immunofluorescence	Tested During Development
Immunoprecipitation	Tested During Development
Immunohistochemistry	Not Recommended

Recommended Assay Procedure:

Western blot: Please refer to http://www.bdbiosciences.com/pharmingen/protocols/Western_Blotting.shtml

BD Biosciences

bdbiosciences.com

United States	Canada	Europe	Japan	Asia Pacific	Latin America/Caribbean
877.232.8995	888.259.0187	32.53.720.550	0120.8555.90	65.6861.0633	55.11.5185.9995

For country-specific contact information, visit bdbiosciences.com/how_to_order/

Conditions: The information disclosed herein is not to be construed as a recommendation to use the above product in violation of any patents. BD Biosciences will not be held responsible for patent infringement or other violations that may occur with the use of our products. Purchase does not include or carry any right to resell or transfer this product either as a stand-alone product or as a component of another product. Any use of this product other than the permitted use without the express written authorization of Becton Dickinson and Company is strictly prohibited.

For Research Use Only. Not for use in diagnostic or therapeutic procedures. Not for resale.

BD, BD Logo and all other trademarks are the property of Becton, Dickinson and Company. ©2008 BD



Suggested Companion Products

Catalog Number	Name	Size	Clone
611450	Human Endothelial Cell Lysate	500 µg	(none)
554002	HRP Goat Anti-Mouse Ig	1.0 ml	(none)
554001	FITC Goat Anti-Mouse Ig	0.5 mg	Polyclonal

Product Notices

1. Since applications vary, each investigator should titrate the reagent to obtain optimal results.
2. Source of all serum proteins is from USDA inspected abattoirs located in the United States.
3. Caution: Sodium azide yields highly toxic hydrazoic acid under acidic conditions. Dilute azide compounds in running water before discarding to avoid accumulation of potentially explosive deposits in plumbing.
4. Please refer to www.bdbiosciences.com/pharming/en/protocols for technical protocols.

References

Akashi M, Tsuchiya Y, Yoshino T, Nishida E. Control of intracellular dynamics of mammalian period proteins by casein kinase I epsilon (CKIepsilon) and CKIdelta in cultured cells. *Mol Cell Biol*. 2002; 22(6):1693-1703. (Biology: Western blot)

Fish KJ, Cegielska A, Getman ME, Landes GM, Virshup DM. Isolation and characterization of human casein kinase I epsilon (CKI), a novel member of the CKI gene family. *J Biol Chem*. 1995; 270(25):14875-14883. (Biology)

Kishida M, Hino Si, Michiue T, et al. Synergistic activation of the Wnt signaling pathway by Dvl and casein kinase Iepsilon. *J Biol Chem*. 2001; 276(35):33147-33155. (Biology: Western blot)

Peters JM, McKay RM, McKay JP, Graff JM. Casein kinase I transduces Wnt signals. *Nature*. 1999; 401(6751):345-350. (Biology: Western blot)