

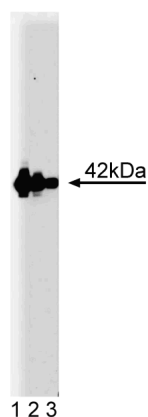
Technical Data Sheet

Purified Mouse Anti-Flotillin-2**Product Information**

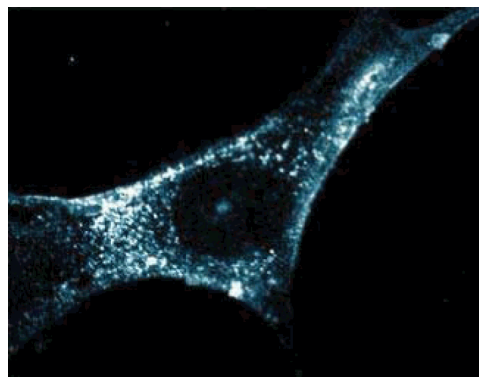
Material Number:	610383
Alternate Name:	ESA
Size:	50 µg
Concentration:	250 µg/ml
Clone:	29/Flotillin-2
Immunogen:	Human ESA aa. 122-379
Isotype:	Mouse IgG1
Reactivity:	QC Testing: Human Testing in Development: Dog, Rat, Mouse, Chicken
Target MW:	42 kDa
Storage Buffer:	Aqueous buffered solution containing BSA, glycerol, and ≤0.09% sodium azide.

Description

Flotillin-2/ESA (epidermal surface antigen) plays a role in intercellular epidermal adhesion. Epidermal surface proteins have an important role in normal epidermal maintenance and function. In addition, they are involved in various autoimmune diseases in which auto-antibodies bind to normal epidermal cell surface proteins. This binding causes cell disadherence that leads to blister formation. Such antibodies have been utilized to identify new proteins involved in epidermal cell adhesion. One of these antibodies, ECS-1, was used to isolate Flotillin-2/ESA. The single copy ESA gene is located on the long arm of human chromosome 17, in the region containing the gene for neurofibromatosis 1 (NF1). ESA mRNA is expressed in cultured keratinocytes, melanocytes, fibroblasts, and carcinoma and melanoma cell lines. Flotillin-2/ESA may play a critical role in epidermal structure and maintenance.



Western blot analysis of Flotillin-2 on human endothelial cell lysate. Lane 1: 1:5000, lane 2: 1:10000, lane 3: 1:20000 dilution of anti-Flotillin-2.



Immunofluorescent staining of WI38 cells.

Preparation and Storage

The monoclonal antibody was purified from tissue culture supernatant or ascites by affinity chromatography. Store undiluted at -20°C.

BD Biosciences

bdbiosciences.com

United States	Canada	Europe	Japan	Asia Pacific	Latin America/Caribbean
877.232.8995	888.259.0187	32.53.720.550	0120.8555.90	65.6861.0633	55.11.5185.9995

For country-specific contact information, visit bdbiosciences.com/how_to_order/

Conditions: The information disclosed herein is not to be construed as a recommendation to use the above product in violation of any patents. BD Biosciences will not be held responsible for patent infringement or other violations that may occur with the use of our products. Purchase does not include or carry any right to resell or transfer this product either as a stand-alone product or as a component of another product. Any use of this product other than the permitted use without the express written authorization of Becton Dickinson and Company is strictly prohibited.

For Research Use Only. Not for use in diagnostic or therapeutic procedures. Not for resale.

BD, BD Logo and all other trademarks are the property of Becton, Dickinson and Company. ©2008 BD



Application Notes

Application

Western blot	Routinely Tested
Immunoprecipitation	Tested During Development
Immunofluorescence	Tested During Development
Immunohistochemistry	Not Recommended

Recommended Assay Procedure:

Western blot: Please refer to http://www.bdbiosciences.com/pharming/en/protocols/Western_Blotting.shtml.

Suggested Companion Products

Catalog Number	Name	Size	Clone
611450	Human Endothelial Cell Lysate	500 µg	(none)
554002	HRP Goat Anti-Mouse Ig	1.0 ml	(none)
554001	FITC Goat Anti-Mouse Ig	0.5 mg	Polyclonal

Product Notices

1. Since applications vary, each investigator should titrate the reagent to obtain optimal results.
2. Please refer to www.bdbiosciences.com/pharming/en/protocols for technical protocols.
3. Caution: Sodium azide yields highly toxic hydrazoic acid under acidic conditions. Dilute azide compounds in running water before discarding to avoid accumulation of potentially explosive deposits in plumbing.
4. Source of all serum proteins is from USDA inspected abattoirs located in the United States.

References

Nebi T, Pestonjamas KN, Leszyk JD, Crowley JL, Oh SW, Luna EJ. Proteomic analysis of a detergent-resistant membrane skeleton from neutrophil plasma membranes. *J Biol Chem.* 2002; 277(45):43399-43409.(Clone-specific: Western blot)
Rybin VO, Xu X, Lisanti MP, Steinberg SF. Differential targeting of beta -adrenergic receptor subtypes and adenylyl cyclase to cardiomyocyte caveolae. A mechanism to functionally regulate the cAMP signaling pathway. *J Biol Chem.* 2000; 275(52):41447-41457.(Clone-specific: Western blot)
Salzer U, Hinterdorfer P, Hunger U, Borken C, Prohaska R. Ca(++)-dependent vesicle release from erythrocytes involves stomatin-specific lipid rafts, synexin (annexin VII), and sorcin. *Blood.* 2002; 99(7):2569-2577.(Clone-specific: Western blot)
Schroeder WT, Stewart-Galetka S, Mandavilli S, Parry DA, Goldsmith L, Duvic M. Cloning and characterization of a novel epidermal cell surface antigen (ESA). *J Biol Chem.* 1994; 269(31):19983-19991.(Biology)
Stuermer CA, Lang DM, Kirsch F, Wiechers M, Deininger SO, Plattner H. Glycosylphosphatidylinositol-anchored proteins and fyn kinase assemble in noncaveolar plasma membrane microdomains defined by reggie-1 and -2. *Mol Biol Cell.* 2001; 12(10):3031-3045.(Clone-specific: Electron microscopy, Immunofluorescence, Immunoprecipitation, Western blot)