

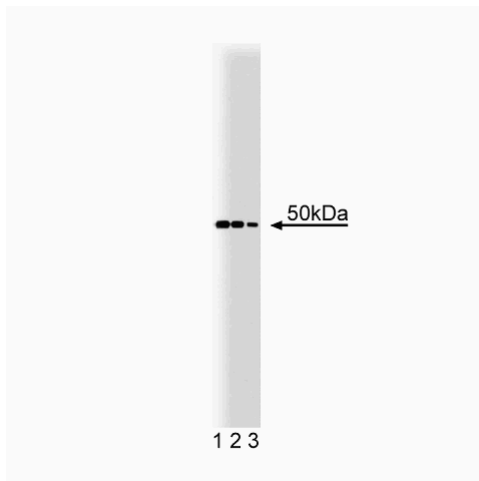
Technical Data Sheet

Purified Mouse Anti-PTP1B**Product Information**

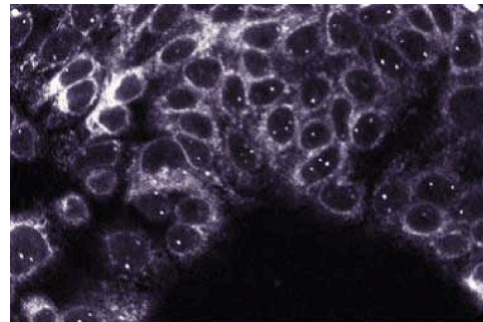
Material Number:	610139
Size:	50 µg
Concentration:	250 µg/ml
Clone:	15/PTP1B
Immunogen:	Human PTP1B aa. 269-435
Isotype:	Mouse IgG2a
Reactivity:	QC Testing: Human Tested in Development: Dog, Rat, Mouse, Chicken, Frog
Target MW:	50 kDa
Storage Buffer:	Aqueous buffered solution containing BSA, glycerol, and ≤0.09% sodium azide.

Description

PTP1B is a member of the class of enzymes termed protein tyrosine phosphatases (PTPs). This 50 kDa protein contains a conserved phosphatases domain at residues 30-278 and is localized to the cytoplasmic face of the endoplasmic reticulum by its C-terminal 35 residues. Its interactions with other proteins are mediated by proline-rich regions and SH2 compatible sequences. PTP1B is thought to act as a negative regulator in insulin signaling. Insulin stimulation induces its association with the insulin receptor and tyrosine phosphorylation. Its overexpression inhibits proximal and distal insulin signaling events, possibly due to receptor dephosphorylation. Microinjection of PTP1B into *Xenopus* oocytes blocks insulin-induced maturation. Additional studies demonstrate that PTP1B undergoes cell cycle-dependent and/or stress-induced serine phosphorylation. This suggests further regulatory roles that are not yet defined.



Western blot analysis of PTP1B on SW13 lysate. Lane 1: 1:2500, lane 2: 1:5000, lane 3: 1: 10000 dilution of PTP1B.



HCT-8

Preparation and Storage

The monoclonal antibody was purified from tissue culture supernatant or ascites by affinity chromatography. Store undiluted at -20°C.

BD Biosciences

bdbiosciences.com

United States	Canada	Europe	Japan	Asia Pacific	Latin America/Caribbean
877.232.8995	888.259.0187	32.53.720.550	0120.8555.90	65.6861.0633	55.11.5185.9995

For country-specific contact information, visit bdbiosciences.com/how_to_order/

Conditions: The information disclosed herein is not to be construed as a recommendation to use the above product in violation of any patents. BD Biosciences will not be held responsible for patent infringement or other violations that may occur with the use of our products. Purchase does not include or carry any right to resell or transfer this product either as a stand-alone product or as a component of another product. Any use of this product other than the permitted use without the express written authorization of Becton Dickinson and Company is strictly prohibited.

For Research Use Only. Not for use in diagnostic or therapeutic procedures. Not for resale.

BD, BD Logo and all other trademarks are the property of Becton, Dickinson and Company. ©2008 BD



Application Notes

Application

Western blot	Routinely Tested
Immunofluorescence	Tested During Development
Immunoprecipitation	Not Recommended
Immunohistochemistry	Not Recommended

Product Notices

1. Since applications vary, each investigator should titrate the reagent to obtain optimal results.
2. Please refer to www.bdbiosciences.com/pharming/en/protocols for technical protocols.
3. Caution: Sodium azide yields highly toxic hydrazoic acid under acidic conditions. Dilute azide compounds in running water before discarding to avoid accumulation of potentially explosive deposits in plumbing.
4. Source of all serum proteins is from USDA inspected abattoirs located in the United States.

References

Bharadwaj S, Ali A, Ovsenek N. Multiple components of the HSP90 chaperone complex function in regulation of heat shock factor 1 In vivo. *Mol Biol Cell.* 1999; 19(12):8033-8041.(Biology)

Gaits F, Li RY, Bigay J, Ragab A, Ragab-Thomas MF, Chap H. G-protein beta gamma subunits mediate specific phosphorylation of the protein-tyrosine phosphatase SH-PTP1 induced by lysophosphatidic acid. *J Biol Chem.* 1996; 271(33):20151-20155.(Biology)

Rutledge TW, Whiteheart SW. SNAP-23 is a target for calpain cleavage in activated platelets. *J Biol Chem.* 2002; 277(40):37009-37015.(Clone-specific: Western blot)

Tao J, Malbon CC, Wang HY. Galpha(i2) enhances insulin signaling via suppression of protein-tyrosine phosphatase 1B. *J Biol Chem.* 2001; 276(43):39705-39712.(Clone-specific: Immunoprecipitation, Western blot)

Xu G, Arregui C, Lilien J, Balsamo J. PTP1B modulates the association of beta-catenin with N-cadherin through binding to an adjacent and partially overlapping target site. *J Biol Chem.* 2002; 277(51):49989-49997.(Clone-specific: ELISA, Western blot)