

## Technical Data Sheet

## BV510 Rat Anti-Mouse IgE

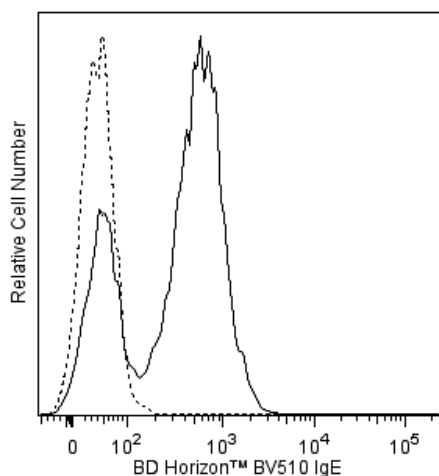
## Product Information

<b>Material Number:</b>	<b>563097</b>
<b>Alternate Name:</b>	Igh-7; immunoglobulin heavy chain 7 (heavy chain of IgE)
<b>Size:</b>	50 µg
<b>Concentration:</b>	0.2 mg/ml
<b>Clone:</b>	R35-72
<b>Immunogen:</b>	Mouse IgE (pooled)
<b>Isotype:</b>	Rat (LOU) IgG1, κ
<b>Reactivity:</b>	QC Testing: Mouse
<b>Storage Buffer:</b>	Aqueous buffered solution containing BSA and ≤0.09% sodium azide.

## Description

The rat anti-mouse IgE antibody (clone R35-72) reacts specifically with mouse IgE of the Igh-C [a] and Igh-C [b] haplotypes. It has been reported not to react with other Ig isotypes. Detection with the rat anti-mouse IgE antibody (clone R35-72) of surface immunoglobulin on IgE-secreting hybridoma cells has also been reported.

The antibody was conjugated to BD Horizon™ BV510 which is part of the BD Horizon™ Brilliant Violet™ family of dyes. With an Ex Max of 405-nm and Em Max at 510-nm, BD Horizon™ BV510 can be excited by the violet laser and detected in the BD Horizon™ V500 (525/50-nm) filter set. BD Horizon™ BV510 conjugates are useful for the detection of dim markers off the violet laser.



**Flow cytometric analysis of IgE expression on 27-74 cells.** Mouse 27-74 cells were stained with BD Horizon™ BV510 Rat Anti-Mouse IgE antibody (Cat. No. 563097; solid line histogram) or BD Horizon™ BV510 Rat IgG1, κ Isotype Control (Cat. No. 563039; dashed line histogram). The fluorescence histograms were derived from gated events with the forward and side light-scatter characteristics of viable cells. Flow cytometric analysis was performed using a BD LSR™ II Flow Cytometer System.

## Preparation and Storage

Store undiluted at 4°C and protected from prolonged exposure to light. Do not freeze.

The monoclonal antibody was purified from tissue culture supernatant or ascites by affinity chromatography.

The antibody was conjugated with BD Horizon™ BV510 under optimum conditions, and unconjugated antibody and free BD Horizon™ BV510 were removed.

## Application Notes

## Application

Flow cytometry	Routinely Tested
----------------	------------------

## Suggested Companion Products

Catalog Number	Name	Size	Clone
554656	Stain Buffer (FBS)	500 ml	(none)
563039	BV510 Rat IgG1, κ Isotype Control	50 µg	R3-34

## BD Biosciences

[bdbiosciences.com](http://bdbiosciences.com)

United States	Canada	Europe	Japan	Asia Pacific	Latin America/Caribbean
877.232.8995	800.979.9408	32.53.720.550	0120.8555.90	65.6861.0633	55.11.5185.9995

For country contact information, visit [bdbiosciences.com/contact](http://bdbiosciences.com/contact)

Conditions: The information disclosed herein is not to be construed as a recommendation to use the above product in violation of any patents. BD Biosciences will not be held responsible for patent infringement or other violations that may occur with the use of our products. Purchase does not include or carry any right to resell or transfer this product either as a stand-alone product or as a component of another product. Any use of this product other than the permitted use without the express written authorization of Becton, Dickinson and Company is strictly prohibited.

For Research Use Only. Not for use in diagnostic or therapeutic procedures. Not for resale.

Unless otherwise noted, BD, BD Logo and all other trademarks are property of Becton, Dickinson and Company. © 2011 BD



## Product Notices

1. Since applications vary, each investigator should titrate the reagent to obtain optimal results.
2. Source of all serum proteins is from USDA inspected abattoirs located in the United States.
3. An isotype control should be used at the same concentration as the antibody of interest.
4. Please refer to [www.bdbiosciences.com/pharming/protocols](http://www.bdbiosciences.com/pharming/protocols) for technical protocols.
5. Caution: Sodium azide yields highly toxic hydrazoic acid under acidic conditions. Dilute azide compounds in running water before discarding to avoid accumulation of potentially explosive deposits in plumbing.
6. For fluorochrome spectra and suitable instrument settings, please refer to our Multicolor Flow Cytometry web page at [www.bdbiosciences.com/colors](http://www.bdbiosciences.com/colors).
7. Brilliant Violet™ 510 is a trademark of Sirigen.

## References

Borges MS, Kumagai Y, Okumura K, Hirayama N, Ovary Z, Tada T. Allelic polymorphism of murine IgE controlled by the seventh immunoglobulin heavy chain allotype locus. *Immunogenetics*. 1981; 13(6):499-507. (Biology)

Driver DJ, McHeyzer-Williams LJ, Cool M, Stetson DB, McHeyzer-Williams MG. Development and maintenance of a B220- memory B cell compartment. *J Immunol*. 2001; 167(3):1393-1405. (Clone-specific; Flow cytometry)

Kamijo S, Takeda H, Tokura T, et al. IL-33-Mediated Innate Response and Adaptive Immune Cells Contribute to Maximum Responses of Protease Allergen-Induced Allergic Airway Inflammation. *J Immunol*. 2013; 190(9):4489-4499. (Clone-specific; Functional assay; Stimulation)

Liu FT, Albrandt K, Sutcliffe JG, Katz DH. Cloning and nucleotide sequence of mouse immunoglobulin epsilon chain cDNA. *Proc Natl Acad Sci U S A*. 1982; 79(24):7852-7856. (Biology)

Markowitz JS, Rogers PR, Grusby MJ, Parker DC, Glimcher LH. B lymphocyte development and activation independent of MHC class II expression. *J Immunol*. 1993; 15(4):1223-1233. (Clone-specific; ELISA)

Nishida Y, Kataoka T, Ishida N, Nakai S, Kishimoto T, Bottcher I, Honjo T. Cloning of mouse immunoglobulin epsilon gene and its location within the heavy chain gene cluster. *Proc Natl Acad Sci U S A*. 1981; 78(3):1581-1585. (Biology)

## BD Biosciences

[bdbiosciences.com](http://bdbiosciences.com)

United States	Canada	Europe	Japan	Asia Pacific	Latin America/Caribbean
877.232.8995	800.979.9408	32.53.720.550	0120.8555.90	65.6861.0633	55.11.5185.9995

For country contact information, visit [bdbiosciences.com/contact](http://bdbiosciences.com/contact)

Conditions: The information disclosed herein is not to be construed as a recommendation to use the above product in violation of any patents. BD Biosciences will not be held responsible for patent infringement or other violations that may occur with the use of our products. Purchase does not include or carry any right to resell or transfer this product either as a stand-alone product or as a component of another product. Any use of this product other than the permitted use without the express written authorization of Becton, Dickinson and Company is strictly prohibited.

For Research Use Only. Not for use in diagnostic or therapeutic procedures. Not for resale.

Unless otherwise noted, BD, BD Logo and all other trademarks are property of Becton, Dickinson and Company. © 2011 BD

