

Technical Data Sheet

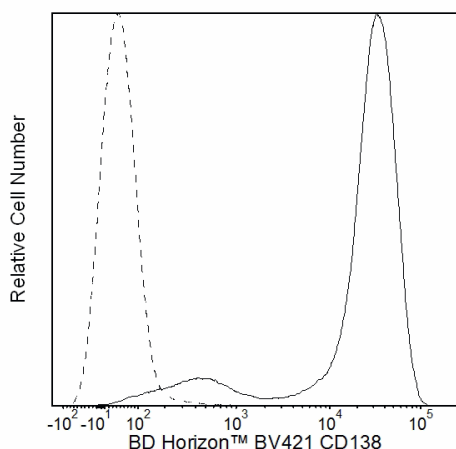
BV421 Mouse Anti-Human CD138**Product Information**

Material Number:	562935
Alternate Name:	Syndecan; SDC; Syndecan 1; SDC1; SYND1
Size:	50 tests
Vol. per Test:	5 µl
Clone:	MI15
Immunogen:	Human U266 and XG-1 Myeloma Cell Lines
Isotype:	Mouse (BALB/c) IgG1, κ
Reactivity:	QC Testing: Human
Workshop:	VI BP100, B005
Storage Buffer:	Aqueous buffered solution containing BSA and ≤0.09% sodium azide.

Description

The MI15 monoclonal antibody specifically binds to CD138 (Syndecan-1), an 85-92 kDa single chain transmembrane protein, strongly expressed on multiple-myeloma-derived cell lines and malignant plasma cell populations. It is also expressed on pre-B cells, immature B cells, and plasma cells, but not on mature circulating B-lymphocytes. Syndecan-1 is a member of the family of transmembrane heparan sulfate proteoglycans. It is also expressed on some non-hematopoietic cells, including embryonic mesenchymal cells, vascular smooth muscle cells, endothelial and neural cells. CD138 binds to many extracellular matrix proteins through its heparan sulfate side-chains, like fibronectin, collagen types I, III, and V, tenascin, thrombospondin, and antithrombin III. It is considered an extracellular matrix receptor that may serve as a co-receptor for fibroblast growth factor and related molecules. Monoclonal antibody MI15 blocks the binding of clone B-B4 but not clone DL-101 (other anti-syndecan-1 antibodies) by flow cytometric analysis.

The antibody was conjugated to BD Horizon™ BV421 which is part of the BD Horizon™ Brilliant Violet™ family of dyes. With an Ex Max of 407-nm and Em Max at 421-nm, BD Horizon™ BV421 can be excited by the violet laser and detected in the standard Pacific Blue™ filter set (eg, 450/50-nm filter). BD Horizon™ BV421 conjugates are very bright, often exhibiting a 10 fold improvement in brightness compared to Pacific Blue™ conjugates.



Flow cytometric analysis of CD138 expression on U266 cells. Human U266 cells (ATCC TIB-196™) were stained with either BD Horizon™ BV421 Mouse anti-Human CD138 antibody (Cat. No. 562935, solid line histogram) or a BD Horizon™ BV421 mlgG1, κ Isotype Control (Cat. No. 562438; dashed line histogram). Flow cytometric fluorescence histograms were derived from gated events with the forward and side light-scatter characteristics of viable cells. Flow cytometry was performed using a BD™ LSR II Flow Cytometer System.

Preparation and Storage

Store undiluted at 4°C and protected from prolonged exposure to light. Do not freeze.

The monoclonal antibody was purified from tissue culture supernatant or ascites by affinity chromatography.

The antibody was conjugated with BD Horizon™ BV421 under optimum conditions, and unconjugated antibody and free BD Horizon™ BV421 were removed.

Application Notes**Application**

Flow cytometry	Routinely Tested
----------------	------------------

BD Biosciences

bdbiosciences.com

United States	Canada	Europe	Japan	Asia Pacific	Latin America/Caribbean
877.232.8995	800.979.9408	32.53.720.550	0120.8555.90	65.6861.0633	55.11.5185.9995

For country contact information, visit bdbiosciences.com/contact

Conditions: The information disclosed herein is not to be construed as a recommendation to use the above product in violation of any patents. BD Biosciences will not be held responsible for patent infringement or other violations that may occur with the use of our products. Purchase does not include or carry any right to resell or transfer this product either as a stand-alone product or as a component of another product. Any use of this product other than the permitted use without the express written authorization of Becton, Dickinson and Company is strictly prohibited.

For Research Use Only. Not for use in diagnostic or therapeutic procedures. Not for resale.

Unless otherwise noted, BD, BD Logo and all other trademarks are property of Becton, Dickinson and Company. © 2011 BD



Suggested Companion Products

Catalog Number	Name	Size	Clone
562438	BV421 Mouse IgG1, k Isotype Control	50 µg	X40
554656	Stain Buffer (FBS)	500 ml	(none)

Product Notices

1. This reagent has been pre-diluted for use at the recommended Volume per Test. We typically use 1×10^6 cells in a 100-µl experimental sample (a test).
2. Source of all serum proteins is from USDA inspected abattoirs located in the United States.
3. An isotype control should be used at the same concentration as the antibody of interest.
4. Please refer to www.bdbiosciences.com/pharming/en/protocols for technical protocols.
5. Caution: Sodium azide yields highly toxic hydrazoic acid under acidic conditions. Dilute azide compounds in running water before discarding to avoid accumulation of potentially explosive deposits in plumbing.
6. For fluorochrome spectra and suitable instrument settings, please refer to our Multicolor Flow Cytometry web page at www.bdbiosciences.com/colors.
7. Pacific Blue™ is a trademark of Molecular Probes, Inc., Eugene, OR.
8. Brilliant Violet™ 421 is a trademark of Sirigen.

References

Barclay NA, Brown MH, Birkeland ML, et al, ed. *The Leukocyte Antigen FactsBook*. San Diego, CA: Academic Press; 1997. (Biology)

Costes V, Magen V, Legouffe E, et al. The Mi15 monoclonal antibody (anti-syndecan-1) is a reliable marker for quantifying plasma cells in paraffin-embedded bone marrow biopsy specimens. *Hum Pathol*. 1999; 30(12):1405-1411. (Immunogen: Immunohistochemistry)

Gattei V, Godeas C, Degan M, Rossi FM, Aldinucci D, Pinto A. Characterization of anti-CD138 monoclonal antibodies as tools for investigating the molecular polymorphism of syndecan-1 in human lymphoma cells. *Br J Haematol*. 1999; 104(1):152-162. (Clone-specific: Flow cytometry, Immunoprecipitation)

Horvathova M, Gaillard JP, Liautard J, Duperray C, Lavabre-Bertrand T, Bourquard P, Rossi JF, Klein B, Brochier J. Identification of novel and specific antigens of human plasma cells by mAb. In: Schlossman SF, Boumsell L, Gilks W, et al, ed. *Leukocyte Typing V: White Cell Differentiation Antigens*. New York, NY: Oxford University Press; 1995:713-714. (Immunogen: Blocking, Flow cytometry, Immunoprecipitation)

Wijdenes J, Clément C, Klein B, Dore J-M. CD138 (syndecan-1) Workshop Panel report. In: Kishimoto T, Kikutani H, von dem Borne AEGK, ed. *Leukocyte Typing VI: White Cell Differentiation Antigens*. New York: Garland Publishing Inc; 1998:249-252. (Clone-specific: Flow cytometry)

BD Biosciences

bdbiosciences.com

United States	Canada	Europe	Japan	Asia Pacific	Latin America/Caribbean
877.232.8995	800.979.9408	32.53.720.550	0120.8555.90	65.6861.0633	55.11.5185.9995

For country contact information, visit bdbiosciences.com/contact

Conditions: The information disclosed herein is not to be construed as a recommendation to use the above product in violation of any patents. BD Biosciences will not be held responsible for patent infringement or other violations that may occur with the use of our products. Purchase does not include or carry any right to resell or transfer this product either as a stand-alone product or as a component of another product. Any use of this product other than the permitted use without the express written authorization of Becton, Dickinson and Company is strictly prohibited.

For Research Use Only. Not for use in diagnostic or therapeutic procedures. Not for resale.

Unless otherwise noted, BD, BD Logo and all other trademarks are property of Becton, Dickinson and Company. © 2011 BD

