

Technical Data Sheet

BV421 Rat Anti-Mouse CD162

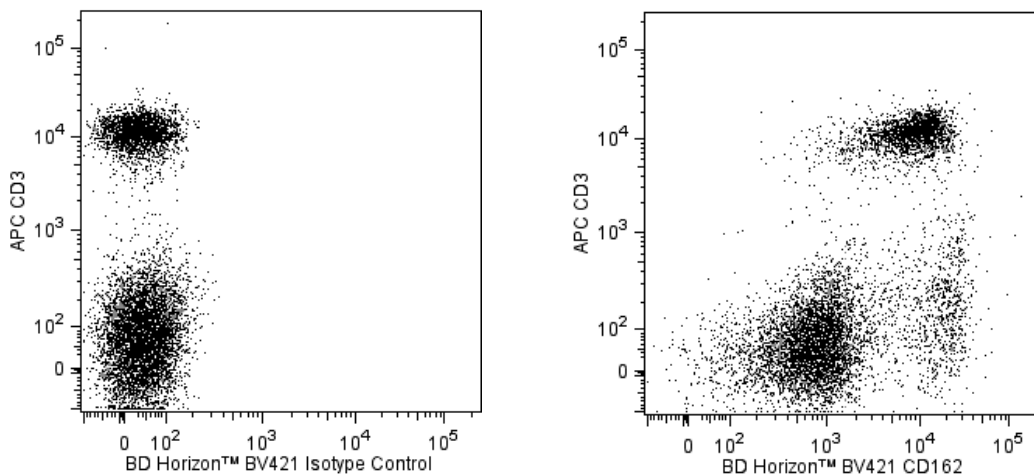
Product Information

Material Number:	562807
Alternate Name:	Selp1g; PSGL-1; Psg1l; Selp1; Selp1; P-selectin glycoprotein ligand 1
Size:	50 µg
Concentration:	0.2 mg/ml
Clone:	2PH1
Immunogen:	Ovalbumin-conjugated peptide covering amino acids 42 to 60 of mouse PSGL-1
Isotype:	Rat (LEW) IgG1, κ
Reactivity:	QC Testing: Mouse
Storage Buffer:	Aqueous buffered solution containing BSA and ≤0.09% sodium azide.

Description

The 2PH1 monoclonal antibody specifically binds to the N-terminus of CD162 (P-selectin glycoprotein ligand-1, PSGL-1), encoded by the *Selp1g* gene. PSGL-1 is expressed on the cell surface as a homodimer of approximately 230 kDa. In the mouse, *Selp1* mRNA is detected in most tissues, with high levels found in hematopoietic cells, brain, and adipose tissue. Flow cytometric analyses have revealed CD162 expression on bone marrow-derived mast and dendritic cells, splenic leukocytes, platelets, peripheral blood neutrophils, and neutrophil and T-cell lines. PSGL-1 is a ligand for P-selectin (CD62P) and is involved in leukocyte rolling, the migration of leukocytes into inflamed tissues, and responses to vascular injury. It is a sialomucin that must be specifically sialylated, fucosylated, and sulfated to bind P-selectin. There is also evidence that other ligands for PSGL-1 and CD62P may exist. The 2PH1 antibody is reported to block binding of mouse leukocytes to CD62P, but the 4RA10 antibody (Cat. No. 557787) has significantly greater blocking activity.

The antibody was conjugated to BD Horizon™ BV421 which is part of the BD Horizon™ Brilliant Violet™ family of dyes. With an Ex Max of 407-nm and Em Max at 421-nm, BD Horizon™ BV421 can be excited by the violet laser and detected in the standard Pacific Blue™ filter set (eg, 450/50-nm filter). BD Horizon™ BV421 conjugates are very bright, often exhibiting a 10 fold improvement in brightness compared to Pacific Blue™ conjugates.



Multicolor flow cytometric analysis of CD162 expression on BALB/c mouse splenocytes. Splenic leucocytes were stained simultaneously with APC Hamster Anti-Mouse CD3 antibody (Cat. No. 553066/561826) and with either BD Horizon™ BV421 Rat IgG1, κ Isotype Control (Cat. No. 562868; Left Panel) or BD Horizon™ BV421 Rat Anti-Mouse CD162 (Cat. No. 562807; Right Panel). Two-color flow cytometric dot plots show the correlated expression patterns of CD162 (or Ig isotype control staining) versus CD3 for gated events with the forward and side light-scatter characteristics of viable spleen cells. Flow cytometry was performed using a BD LSRFortessa™ Cell Analyzer System.

Preparation and Storage

Store undiluted at 4°C and protected from prolonged exposure to light. Do not freeze.

The monoclonal antibody was purified from tissue culture supernatant or ascites by affinity chromatography.

The antibody was conjugated with BD Horizon™ BV421 under optimum conditions, and unconjugated antibody and free BD Horizon™ BV421 were removed.

BD Biosciences

bdbiosciences.com

United States	Canada	Europe	Japan	Asia Pacific	Latin America/Caribbean
877.232.8995	800.979.9408	32.53.720.550	0120.8555.90	65.6861.0633	55.11.5185.9995

For country contact information, visit bdbiosciences.com/contact

Conditions: The information disclosed herein is not to be construed as a recommendation to use the above product in violation of any patents. BD Biosciences will not be held responsible for patent infringement or other violations that may occur with the use of our products. Purchase does not include or carry any right to resell or transfer this product either as a stand-alone product or as a component of another product. Any use of this product other than the permitted use without the express written authorization of Becton, Dickinson and Company is strictly prohibited.

For Research Use Only. Not for use in diagnostic or therapeutic procedures. Not for resale.

Unless otherwise noted, BD, BD Logo and all other trademarks are property of Becton, Dickinson and Company. © 2011 BD



Application Notes

Application

Flow cytometry

Routinely Tested

Suggested Companion Products

Catalog Number	Name	Size	Clone
562868	BV421 Rat IgG1, κ Isotype Control	50 μ g	R3-34
554656	Stain Buffer (FBS)	500 ml	(none)
553066	APC Hamster Anti-Mouse CD3e	0.1 mg	145-2C11
561826	APC Hamster Anti-Mouse CD3e	25 μ g	145-2C11

Product Notices

1. Since applications vary, each investigator should titrate the reagent to obtain optimal results.
2. Source of all serum proteins is from USDA inspected abattoirs located in the United States.
3. An isotype control should be used at the same concentration as the antibody of interest.
4. Please refer to www.bdbiosciences.com/pharming/en/protocols for technical protocols.
5. Caution: Sodium azide yields highly toxic hydrazoic acid under acidic conditions. Dilute azide compounds in running water before discarding to avoid accumulation of potentially explosive deposits in plumbing.
6. For fluorochrome spectra and suitable instrument settings, please refer to our Multicolor Flow Cytometry web page at www.bdbiosciences.com/colors.
7. Pacific Blue™ is a trademark of Molecular Probes, Inc., Eugene, OR.
8. Brilliant Violet™ 421 is a trademark of Sirigen.

References

Borges E, Eytner R, Moll T, et al. The P-selectin glycoprotein ligand-1 is important for recruitment of neutrophils into inflamed mouse peritoneum. *Blood*. 1997; 90(5):1934-1942. (Immunogen: Blocking, ELISA, Flow cytometry, Immunoprecipitation, Inhibition, In vivo exacerbation)

Borges E, Tietz W, Steegmaier M, et al. P-selectin glycoprotein ligand-1 (PSGL-1) on T helper 1 but not on T helper 2 cells binds to P-selectin and supports migration into inflamed skin. *J Exp Med*. 1997; 185(3):573-578. (Biology)

Frenette PS, Denis CV, Weiss L, et al. P-Selectin glycoprotein ligand 1 (PSGL-1) is expressed on platelets and can mediate platelet-endothelial interactions in vivo. *J Exp Med*. 2000; 191(8):1413-1422. (Biology)

Hirata T, Furie BC, Furie B. P-, E-, and L-selectin mediate migration of activated CD8+ T lymphocytes into inflamed skin. *J Immunol*. 2002; 169(8):4307-4313. (Clone-specific: Flow cytometry)

Hirata T, Merrill-Skoloff G, Aab M, Yang J, Furie BC, Furie B. P-Selectin glycoprotein ligand 1 (PSGL-1) is a physiological ligand for E-selectin in mediating T helper 1 lymphocyte migration. *J Exp Med*. 2000; 192(11):1669-1675. (Biology)

Li F, Wilkins PP, Crawley S, Weinstein J, Cummings RD, McEver RP. Post-translational modifications of recombinant P-selectin glycoprotein ligand-1 required for binding to P- and E-selectin. *J Biol Chem*. 1996; 271(6):3255-3264. (Biology)

Pendl GG, Robert C, Steinert M, et al. Immature mouse dendritic cells enter inflamed tissue, a process that requires E- and P-selectin, but not P-selectin glycoprotein ligand 1. *Blood*. 2002; 99(3):946-956. (Clone-specific: Blocking, Flow cytometry, Immunoprecipitation)

Phillips JW, Barringhaus KG, Sanders JM, et al. Single injection of P-selectin or P-selectin glycoprotein ligand-1 monoclonal antibody blocks neointima formation after arterial injury in apolipoprotein E-deficient mice. *Circulation*. 2003; 107(17):2244-2249. (Biology)

Sperandio M, Smith ML, Forlow SB, et al. P-selectin glycoprotein ligand-1 mediates L-selectin-dependent leukocyte rolling in venules. *J Exp Med*. 2003; 197(10):1355-1363. (Clone-specific: Flow cytometry)

Steegmaier M, Blanks JE, Borges E, Vestweber D. P-selectin glycoprotein ligand-1 mediates rolling of mouse bone marrow-derived mast cells on P-selectin but not efficiently on E-selectin. *Eur J Immunol*. 1997; 27(6):1339-1345. (Biology)

Xia L, Sperandio M, Yago T, et al. P-selectin glycoprotein ligand-1-deficient mice have impaired leukocyte tethering to E-selectin under flow. *J Clin Invest*. 2002; 109(7):939-950. (Clone-specific: Flow cytometry)

Yang J, Galipeau J, Kozak CA, Furie BC, Furie B. Mouse P-selectin glycoprotein ligand-1: molecular cloning, chromosomal localization, and expression of a functional P-selectin receptor. *Blood*. 1996; 87(10):4176-4186. (Biology)

BD Biosciences

bdbiosciences.com

United States	Canada	Europe	Japan	Asia Pacific	Latin America/Caribbean
877.232.8995	800.979.9408	32.53.720.550	0120.8555.90	65.6861.0633	55.11.5185.9995

For country contact information, visit bdbiosciences.com/contact

Conditions: The information disclosed herein is not to be construed as a recommendation to use the above product in violation of any patents. BD Biosciences will not be held responsible for patent infringement or other violations that may occur with the use of our products. Purchase does not include or carry any right to resell or transfer this product either as a stand-alone product or as a component of another product. Any use of this product other than the permitted use without the express written authorization of Becton, Dickinson and Company is strictly prohibited.

For Research Use Only. Not for use in diagnostic or therapeutic procedures. Not for resale.

Unless otherwise noted, BD, BD Logo and all other trademarks are property of Becton, Dickinson and Company. © 2011 BD

