

Technical Data Sheet

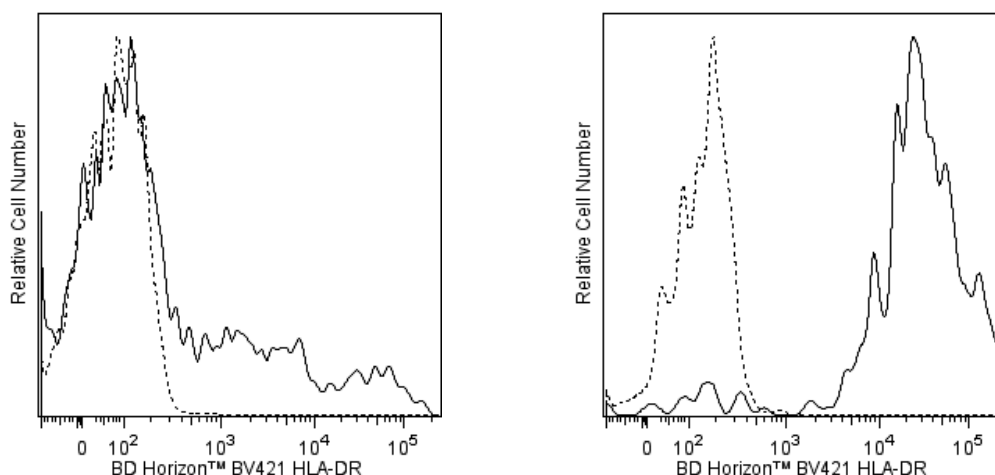
BV421 Mouse Anti-Human HLA-DR**Product Information**

Material Number:	562804
Alternate Name:	MHC class II antigen; HLA class II histocompatibility antigen
Size:	100 tests
Vol. per Test:	5 µl
Clone:	G46-6
Isotype:	Mouse IgG2a, κ
Reactivity:	QC Testing: Human Tested in Development: Rhesus, Cynomolgus, Baboon
Workshop:	NA
Storage Buffer:	Aqueous buffered solution containing BSA and ≤0.09% sodium azide.

Description

The G46-6 monoclonal antibody specifically binds to HLA-DR, a major histocompatibility complex (MHC) class II antigen. HLA-DR antigens are encoded by genes within the Human Leukocyte Antigen (HLA) Complex located on chromosome 6. HLA-DR is a transmembrane heterodimeric glycoprotein composed of an α chain (36 kDa) and a β subunit (27 kDa) expressed primarily on antigen presenting cells: B cells, dendritic cells, monocytes, macrophages, and thymic epithelial cells. HLA-DR is also expressed on activated T cells. This molecule plays a major role in mediating cellular interactions during antigen presentation to CD4-positive T cells.

The antibody was conjugated to BD Horizon™ BV421 which is part of the BD Horizon™ Brilliant Violet™ family of dyes. With an Ex Max of 407-nm and Em Max at 421-nm, BD Horizon™ BV421 can be excited by the violet laser and detected in the standard Pacific Blue™ filter set (eg, 450/50-nm filter). BD Horizon™ BV421 conjugates are very bright, often exhibiting a 10 fold improvement in brightness compared to Pacific Blue™ conjugates.



Flow cytometric analysis of HLA-DR expression on human peripheral blood lymphocytes and monocytes. Human whole blood was stained with the BD Horizon™ BV421 Mouse Anti-Human HLA-DR antibody (Cat. No. 562804/562805; solid line histogram) or with a BD Horizon™ BV421 Mouse IgG2a, κ Isotype Control (Cat. No. 562439; dashed line histogram). The erythrocytes were lysed with BD Pharm Lyse™ Lysing Buffer (Cat. No. 555899). The fluorescence histograms were derived from gated events with the forward and side light-scatter characteristics of viable lymphocytes (Left Panel) or monocytes (Right Panel). Flow cytometry was performed using a BD™ LSR II Flow Cytometer System.

Preparation and Storage

The monoclonal antibody was purified from tissue culture supernatant or ascites by affinity chromatography.

Store undiluted at 4°C and protected from prolonged exposure to light. Do not freeze.

The antibody was conjugated with BD Horizon™ BV421 under optimum conditions, and unconjugated antibody and free BD Horizon™ BV421 were removed.

BD Biosciences

bdbiosciences.com

United States	Canada	Europe	Japan	Asia Pacific	Latin America/Caribbean
877.232.8995	800.979.9408	32.53.720.550	0120.8555.90	65.6861.0633	55.11.5185.9995

For country contact information, visit bdbiosciences.com/contact

Conditions: The information disclosed herein is not to be construed as a recommendation to use the above product in violation of any patents. BD Biosciences will not be held responsible for patent infringement or other violations that may occur with the use of our products. Purchase does not include or carry any right to resell or transfer this product either as a stand-alone product or as a component of another product. Any use of this product other than the permitted use without the express written authorization of Becton, Dickinson and Company is strictly prohibited.

For Research Use Only. Not for use in diagnostic or therapeutic procedures. Not for resale.

Unless otherwise noted, BD, BD Logo and all other trademarks are property of Becton, Dickinson and Company. © 2011 BD



Application Notes

Application

Flow cytometry

Routinely Tested

Suggested Companion Products

Catalog Number	Name	Size	Clone
554656	Stain Buffer (FBS)	500 ml	(none)
562439	BV421 Mouse IgG2a, k Isotype Control	50 µg	G155-178
555899	Lysing Buffer	100 ml	(none)
562805	BV421 Mouse Anti-Human HLA-DR	25 tests	G46-6

Product Notices

1. This reagent has been pre-diluted for use at the recommended Volume per Test. We typically use 1×10^6 cells in a 100-µl experimental sample (a test).
2. Source of all serum proteins is from USDA inspected abattoirs located in the United States.
3. An isotype control should be used at the same concentration as the antibody of interest.
4. Please refer to www.bdbiosciences.com/pharming/en/protocols for technical protocols.
5. Caution: Sodium azide yields highly toxic hydrazoic acid under acidic conditions. Dilute azide compounds in running water before discarding to avoid accumulation of potentially explosive deposits in plumbing.
6. For fluorochrome spectra and suitable instrument settings, please refer to our Multicolor Flow Cytometry web page at www.bdbiosciences.com/colors.
7. Pacific Blue™ is a trademark of Molecular Probes, Inc., Eugene, OR.
8. Brilliant Violet™ 421 is a trademark of Sirigen.
9. Species testing during development may have been performed with a different format of the same clone. Selected applications have been tested for cross-reactivity.

References

Kitani A, Chua K, Nakamura K, Strober W. Activated self-MHC-reactive T cells have the cytokine phenotype of Th3/T regulatory cell 1 T cells. *J Immunol.* 2000; 165(2):691-702. (Clone-specific: Flow cytometry)

Zola H, Swart B, Nicholson I, Voss E. *Leukocyte and Stromal Cell Molecules. The CD Markers*. Hoboken, New Jersey: John Wiley & Sons, Inc.; 2007:1-581. (Biology)

BD Biosciences

bdbiosciences.com

United States	Canada	Europe	Japan	Asia Pacific	Latin America/Caribbean
877.232.8995	800.979.9408	32.53.720.550	0120.8555.90	65.6861.0633	55.11.5185.9995

For country contact information, visit bdbiosciences.com/contact

Conditions: The information disclosed herein is not to be construed as a recommendation to use the above product in violation of any patents. BD Biosciences will not be held responsible for patent infringement or other violations that may occur with the use of our products. Purchase does not include or carry any right to resell or transfer this product either as a stand-alone product or as a component of another product. Any use of this product other than the permitted use without the express written authorization of Becton, Dickinson and Company is strictly prohibited.

For Research Use Only. Not for use in diagnostic or therapeutic procedures. Not for resale.

Unless otherwise noted, BD, BD Logo and all other trademarks are property of Becton, Dickinson and Company. © 2011 BD

