

## Technical Data Sheet

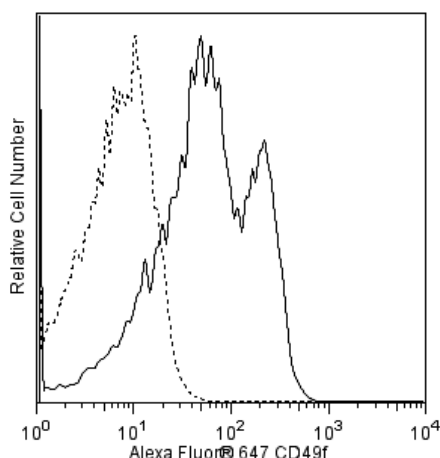
## Alexa Fluor® 647 Rat Anti-Human CD49f

## Product Information

<b>Material Number:</b>	562473
<b>Alternate Name:</b>	Integrin α6 chain
<b>Size:</b>	100 tests
<b>Vol. per Test:</b>	5 µl
<b>Clone:</b>	GoH3
<b>Immunogen:</b>	Mouse mammary tumor cells
<b>Isotype:</b>	Rat (SD) IgG2a, κ
<b>Reactivity:</b>	QC Testing: Human
<b>Workshop:</b>	IV P55
<b>Storage Buffer:</b>	Aqueous buffered solution containing BSA and ≤0.09% sodium azide.

## Description

The GoH3 monoclonal antibody specifically binds to CD49f or integrin α6 chain, a 150 kDa transmembrane protein, member of extracellular matrix and cell adhesion receptor family. α6 associates with integrin β1 chain (CD29) to form VLA-6 and with integrin β4 chain (CD104) to form the α6 β4 complex, also known as the laminin and kalinin receptor. CD49f is expressed mainly on T cells, monocytes, platelets, epithelial and endothelial cells, perineural cells and trophoblasts of placenta. GoH3 recognizes an extracellular epitope of integrin α6 on human, mouse and bovine cells. GoH3 has been reported to block the binding of integrin α6 to laminin P1 and E8 fragments.



**Flow cytometric analysis of CD49f expression on human peripheral blood lymphocytes.** Whole blood was stained with Alexa Fluor® 647 Mouse Anti-Human CD49f antibody (Cat. No. 562473/562494; solid line histogram) or with an Alexa Fluor® 647 Rat IgG2a, κ Isotype Control (Cat. No. 557690, dashed line histogram). The erythrocytes were lysed with BD Pharm Lyse™ Lysing Buffer (Cat. No. 555899). The fluorescence histograms were derived from events with the forward and side light-scatter characteristics of viable lymphocytes. Flow cytometry was performed using a BD™ LSR II Flow Cytometer System.

## Preparation and Storage

Store undiluted at 4°C and protected from prolonged exposure to light. Do not freeze.

The monoclonal antibody was purified from tissue culture supernatant or ascites by affinity chromatography.

The antibody was conjugated to Alexa Fluor® 647 under optimum conditions, and unreacted Alexa Fluor® 647 was removed.

## Application Notes

## Application

Flow cytometry	Routinely Tested
----------------	------------------

## Suggested Companion Products

Catalog Number	Name	Size	Clone
562494	Alexa Fluor® 647 Rat Anti-Human CD49f	25 tests	GoH3
557690	Alexa Fluor® 647 Rat IgG2a, κ Isotype Control	0.1 mg	R35-95
555899	Lysing Buffer	100 ml	(none)
554656	Stain Buffer (FBS)	500 ml	(none)

## Product Notices

1. This reagent has been pre-diluted for use at the recommended Volume per Test. We typically use  $1 \times 10^6$  cells in a 100-µl experimental sample (a test).
2. An isotype control should be used at the same concentration as the antibody of interest.

## BD Biosciences

bdbiosciences.com

United States	Canada	Europe	Japan	Asia Pacific	Latin America/Caribbean
877.232.8995	800.979.9408	32.53.720.550	0120.8555.90	65.6861.0633	55.11.5185.9995

For country contact information, visit [bdbiosciences.com/contact](http://bdbiosciences.com/contact)

Conditions: The information disclosed herein is not to be construed as a recommendation to use the above product in violation of any patents. BD Biosciences will not be held responsible for patent infringement or other violations that may occur with the use of our products. Purchase does not include or carry any right to resell or transfer this product either as a stand-alone product or as a component of another product. Any use of this product other than the permitted use without the express written authorization of Becton, Dickinson and Company is strictly prohibited.

For Research Use Only. Not for use in diagnostic or therapeutic procedures. Not for resale.

Unless otherwise noted, BD, BD Logo and all other trademarks are property of Becton, Dickinson and Company. © 2011 BD



3. Source of all serum proteins is from USDA inspected abattoirs located in the United States.
4. The Alexa Fluor®, Pacific Blue™, and Cascade Blue® dye antibody conjugates in this product are sold under license from Molecular Probes, Inc. for research use only, excluding use in combination with microarrays, or as analyte specific reagents. The Alexa Fluor® dyes (except for Alexa Fluor® 430), Pacific Blue™ dye, and Cascade Blue® dye are covered by pending and issued patents.
5. Alexa Fluor® is a registered trademark of Molecular Probes, Inc., Eugene, OR.
6. Alexa Fluor® 647 fluorochrome emission is collected at the same instrument settings as for allophycocyanin (APC).
7. Caution: Sodium azide yields highly toxic hydrazoic acid under acidic conditions. Dilute azide compounds in running water before discarding to avoid accumulation of potentially explosive deposits in plumbing.
8. For fluorochrome spectra and suitable instrument settings, please refer to our Multicolor Flow Cytometry web page at [www.bdbiosciences.com/colors](http://www.bdbiosciences.com/colors).
9. Please refer to [www.bdbiosciences.com/pharming/protocols](http://www.bdbiosciences.com/pharming/protocols) for technical protocols.

## References

Aumailley M, Timpl R, Sonnenberg A. Antibody to integrin alpha 6 subunit specifically inhibits cell-binding to laminin fragment 8. *Exp Cell Res*. 1990; 188(1):55-60. (Biology)

Knapp W, Dorken B, Rieber EP, et al, ed. *Leucocyte Typing IV*. New York: Oxford University Press; 1989:1-1208. (Biology)

Sonnenberg A, Daams H, Van der Valk MA, Hilkens J, Hilgers J. Development of mouse mammary gland: identification of stages in differentiation of luminal and myoepithelial cells using monoclonal antibodies and polyvalent antiserum against keratin. *J Histochem Cytochem*. 1986; 34(8):1037-1046. (Immunogen: Immunohistochemistry, Radioimmunoassay)

## BD Biosciences

[bdbiosciences.com](http://bdbiosciences.com)

United States	Canada	Europe	Japan	Asia Pacific	Latin America/Caribbean
877.232.8995	800.979.9408	32.53.720.550	0120.8555.90	65.6861.0633	55.11.5185.9995

For country contact information, visit [bdbiosciences.com/contact](http://bdbiosciences.com/contact)

*Conditions: The information disclosed herein is not to be constructed as a recommendation to use the above product in violation of any patents. BD Biosciences will not be help responsible for patent infringement or other violations that may occur with the use of our products. Purchase does not include or carry any right to resell or transfer this product either as a stand-alone product or as a component of another product. Any use of this product other than the permitted use without the express written authorization of Becton, Dickinson and Company is strictly prohibited.*

*For Research Use Only. Not for use in diagnostic or therapeutic procedures. Not for resale.*

Unless otherwise noted, BD, BD Logo and all other trademarks are property of Becton, Dickinson and Company. © 2011 BD

