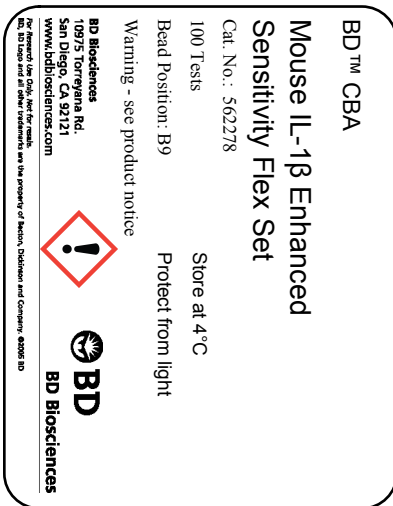


## Technical Data Sheet

Mouse IL-1 $\beta$  Enhanced Sensitivity Flex Set

## Product Information

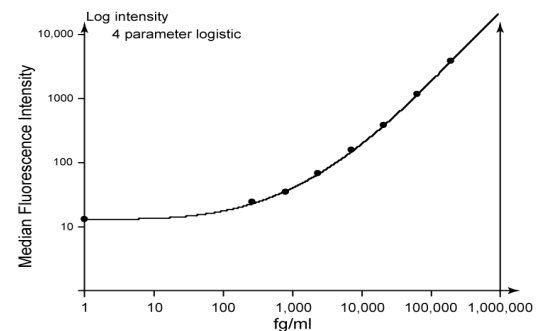
Material Number:	562278
Size:	100 Tests
Bead Position:	B9
Assay Range:	274-200,000 fg/mL
Reactivity:	QC Testing: Mouse



Component Description: Mouse IL-1 $\beta$  Standard  
 Component Mat. No: 51-9005500  
 Component Storage Buffer: Lyophilized in an aqueous buffered solution containing BSA and ProClin™ 150.

Component Description: Mouse IL-1 $\beta$  Enhanced Sensitivity Capture Bead B9  
 Component Mat. No: 51-9007800  
 Component Storage Buffer: Aqueous buffered solution containing fetal bovine serum and  $\leq 0.09\%$  sodium azide.

Component Description: Mouse IL-1 $\beta$  Detection Reagent (Part A)  
 Component Mat. No: 51-9007802  
 Component Storage Buffer: Aqueous buffered solution containing BSA and ProClin™ 150 as preservative.



**Figure 1. Example of BD CBA Mouse IL-1 $\beta$  Enhanced Sensitivity Flex Set standard curve.** Data was acquired using a BD FACSArray™ Bioanalyzer and analyzed using FCAP Array Software (Cat. No. 641488).

## Description

The BD™ CBA Mouse IL-1 $\beta$  Enhanced Sensitivity Flex Set is a bead-based immunoassay capable of measuring mouse Interleukin-1 $\beta$  (IL-1 $\beta$ ) in serum and cell culture supernatant samples. The BD CBA Enhanced Sensitivity Flex Sets are capable of measuring soluble analytes present in very low concentrations. For more information on bead-based immunoassays, refer to the product insert for the BD CBA Mouse Enhanced Sensitivity Master Buffer Kit (Cat. No. 562246 or 562248).

This BD CBA Enhanced Sensitivity Flex Set contains one vial each of Enhanced Sensitivity Capture Bead and Detection Reagent (Part A) and two vials of Standard. The Enhanced Sensitivity Detection Reagent (Part B) is provided in the BD CBA Mouse Enhanced Sensitivity Master Buffer Kit. The Enhanced Sensitivity Capture Bead and Detection Reagent (Part A) components of this flex set have been formulated to a 20x concentration to ensure product performance when multiplexed. The Standard component is lyophilized and when reconstituted according to the instructions in the BD CBA Mouse Enhanced Sensitivity Master Buffer kit, the top standard point for this assay is 200,000 fg/mL. Discard unused reconstituted standard, do not store or reuse. Store lyophilized standard and other components at 4°C.

## Application Notes

**Recommended Assay Procedure:** The BD CBA Mouse IL-1 $\beta$  Enhanced Sensitivity Flex Set must be used in conjunction with a BD CBA Mouse Enhanced Sensitivity Master Buffer Kit (Cat. No. 562246, 100 tests, or 562248, 500 tests), a flow cytometer, and the FCAP Array™ Software (Cat. No. 641488). Detailed instructions on the use of this product can be found in the manual for the BD CBA Mouse Enhanced Sensitivity Master Buffer Kit. When following the directions in the Master Buffer Kit, the standard range for the BD CBA Mouse IL-1 $\beta$  Enhanced Sensitivity Flex Set will be 274 to 200,000 fg/mL. An example standard curve is shown in Figure 1.

The BD CBA Mouse IL-1 $\beta$  Enhanced Sensitivity Flex Set should only be used in the same assay well with other BD CBA Mouse Enhanced Sensitivity Flex Set reagents. We do not recommend plexing Enhanced Sensitivity Flex Set assays along with assays from any other Flex Set

## BD Biosciences

bdbiosciences.com  
 United States 877.232.8995 Canada 800.268.5430 Europe 32.2.400.98.95 Japan 0120.8555.90 Asia Pacific 65.6861.0633 Latin America/Caribbean 55.11.5185.9995

For country contact information, visit [bdbiosciences.com/contact](http://bdbiosciences.com/contact)

Conditions: The information disclosed herein is not to be construed as a recommendation to use the above product in violation of any patents. BD Biosciences will not be held responsible for patent infringement or other violations that may occur with the use of our products. Purchase does not include or carry any right to resell or transfer this product either as a stand-alone product or as a component of another product. Any use of this product other than the permitted use without the express written authorization of Becton, Dickinson and Company is strictly prohibited.

For Research Use Only. Not for use in diagnostic or therapeutic procedures. Not for resale.

Unless otherwise noted, BD, BD Logo and all other trademarks are property of Becton, Dickinson and Company. © 2014 BD



system (soluble protein, cell signaling, etc.). For an updated assay compatibility chart for the BD CBA Mouse Enhanced Sensitivity Flex Sets, please refer to the BD CBA Flex Set System homepage at <http://www.bdbiosciences.com/cbasetup>.

## Performance

**Limit of Detection:** The theoretical limit of detection is 61.1 fg/ml and was determined by evaluating the estimated result of the average MFI of the negative control (0 fg/ml,  $n=30$ ) + 2 standard deviations.

Specificity		Inter-Assay Reproducibility			Intra-Assay Reproducibility		
		Mean (fg/ml)	Standard Deviation	%CV	Mean (fg/ml)	Standard Deviation	%CV
Mouse IL-1 $\beta$	Sample 1	2,258.2	264.3	12%	2,042.4	140.1	7%
	Sample 2	6,965.1	663.8	10%	6,392.2	256.7	4%
	Sample 3	20,461.7	1,348.8	7%	18,978.1	453.0	2%

**Reproducibility:** The intra-assay and inter-assay reproducibility were determined for the BD CBA Mouse IL-1 $\beta$  Enhanced Sensitivity Flex Set by evaluating ten replicates of three different sample levels (intra-assay) and three replicates of three different sample levels from four separate experiments (inter-assay) respectively.

Specificity	Cell Culture Supernatant		Serum	
	Average % Recovery	Range	Average % Recovery	Range
Mouse IL-1 $\beta$	80%	77 - 82%	65%	58 - 71%

**Recovery:** Cell culture supernatant and pooled mouse serum were spiked with three different levels of protein. The spiked samples were assayed and the results were compared with expected values. Serum samples were diluted 1:3 before the protein was spiked into each. Serum used was commercially available pooled mouse serum.

Sample Dilution	Cell Culture Supernatant		Serum	
	Detected (fg/ml)	% of Expected	Detected (fg/ml)	% of Expected
Spiked sample	17,006.5	100%	14,923.9	100%
1 : 4	6,138.9	108%	5,413.7	109%
1 : 8	2,052.3	109%	1,829.0	110%

**Linearity:** Cell culture supernatant and 1:3 diluted pooled mouse serum were spiked with protein and serially diluted. The diluted samples were assayed and the results were compared with the original spiked sample.

## Product Notices

- ProClin is a trademark of Rohm and Haas Company.
- Caution: Sodium azide yields highly toxic hydrazoic acid under acidic conditions. Dilute azide compounds in running water before discarding to avoid accumulation of potentially explosive deposits in plumbing.
- Source of all serum proteins is from USDA inspected abattoirs located in the United States.
- Warning: CBA lyophilized standard contains 0.02% (w/w) and Detection Reagent (Part A) contains 0.002% (w/w) of a CMIT/MIT mixture (3:1), which is a mixture of: 5-chloro-2-methyl-4-isothiazolin-3-one [EC No 247-500-7] and 2-methyl-4-isothiazolin-3-one [EC No 220-239-6] (3:1).  
Hazard statement: May cause an allergic skin reaction.  
Precautionary statements: Wear protective gloves/eye protection. Wear protective clothing. Avoid breathing mist/vapours/spray. If skin irritation or rash occurs: Get medical advice/attention. IF ON SKIN: Wash with plenty of water. Dispose of contents/container in accordance with local/regional/national/international regulations.

## BD Biosciences

[bdbiosciences.com](http://bdbiosciences.com)

United States 877.232.8995 Canada 800.268.5430 Europe 32.2.400.98.95 Japan 0120.8555.90 Asia Pacific 65.6861.0633 Latin America/Caribbean 55.11.5185.9995

For country contact information, visit [bdbiosciences.com/contact](http://bdbiosciences.com/contact)

Conditions: The information disclosed herein is not to be construed as a recommendation to use the above product in violation of any patents. BD Biosciences will not be held responsible for patent infringement or other violations that may occur with the use of our products. Purchase does not include or carry any right to resell or transfer this product either as a stand-alone product or as a component of another product. Any use of this product other than the permitted use without the express written authorization of Becton, Dickinson and Company is strictly prohibited.

For Research Use Only. Not for use in diagnostic or therapeutic procedures. Not for resale.

Unless otherwise noted, BD, BD Logo and all other trademarks are property of Becton, Dickinson and Company. © 2014 BD

