

Technical Data Sheet

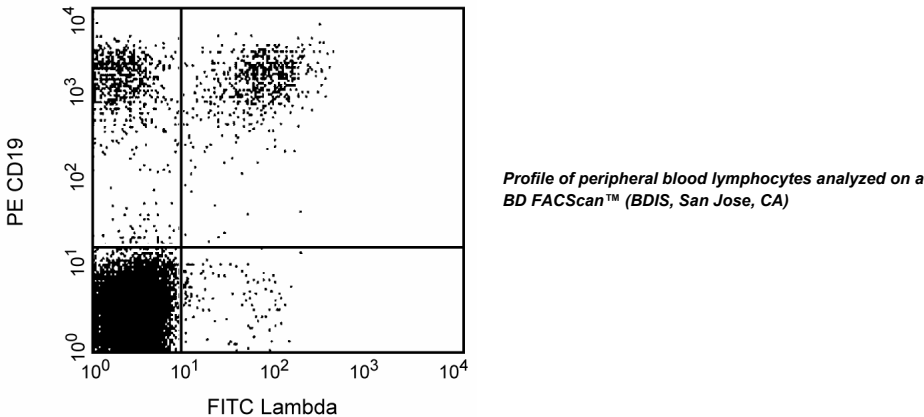
FITC Mouse Anti-Human Light Chain λ

Product Information

|                  |   |
|------------------|---|
| Material Number: | 562053  |
| Alternate Name:  | Ig λ; IGL@; IGL; Immunoglobulin lambda locus                      |
| Size:            | 25 tests  |
| Vol. per Test:   | 20 μl   |
| Clone:           | JDC-12  |
| Isotype:         | Mouse IgG1, κ   |
| Reactivity:      | QC Testing: Human   |
| Storage Buffer:  | Aqueous buffered solution containing BSA and ≤0.09% sodium azide. |

Description

The JDC-12 monoclonal antibody specifically binds to human immunoglobulin light chain, lambda (λ). It does not bind to immunoglobulin κ light chains or heavy chains.



Preparation and Storage

Store undiluted at 4°C and protected from prolonged exposure to light. Do not freeze.  
The monoclonal antibody was purified from tissue culture supernatant or ascites by affinity chromatography.  
The antibody was conjugated with FITC under optimum conditions, and unreacted FITC was removed.

Application Notes

Application

|                |                  |
|----------------|------------------|
| Flow cytometry | Routinely Tested |
|----------------|------------------|

Suggested Companion Products

| Catalog Number | Name                               | Size      | Clone   |
|----------------|------------------------------------|-----------|---------|
| 555748         | FITC Mouse IgG1, κ Isotype Control | 100 tests | MOPC-21 |
| 561741         | PE Mouse Anti-Human CD19           | 25 tests  | HIB19   |

Product Notices

1. This reagent has been pre-diluted for use at the recommended Volume per Test. We typically use  $1 \times 10^6$  cells in a 100-μl experimental sample (a test).
2. Since applications vary, each investigator should titrate the reagent to obtain optimal results.
3. Please refer to [www.bdbiosciences.com/pharmingen/protocols](http://www.bdbiosciences.com/pharmingen/protocols) for technical protocols.
4. Caution: Sodium azide yields highly toxic hydrazoic acid under acidic conditions. Dilute azide compounds in running water before discarding to avoid accumulation of potentially explosive deposits in plumbing.
5. Source of all serum proteins is from USDA inspected abattoirs located in the United States.
6. For fluorochrome spectra and suitable instrument settings, please refer to our Fluorochrome Web Page at [www.bdbiosciences.com/colors](http://www.bdbiosciences.com/colors).

BD Biosciences

[bdbiosciences.com](http://bdbiosciences.com)  
United States 877.232.8995 Canada 888.268.5430 Europe 32.53.720.550 Japan 0120.8555.90 Asia Pacific 65.6861.0633 Latin America/Caribbean 0800.771.7157  
For country-specific contact information, visit [bdbiosciences.com/how\\_to\\_order/](http://bdbiosciences.com/how_to_order/)  
Conditions: The information disclosed herein is not to be construed as a recommendation to use the above product in violation of any patents. BD Biosciences will not be held responsible for patent infringement or other violations that may occur with the use of our products. Purchase does not include or carry any right to resell or transfer this product either as a stand-alone product or as a component of another product. Any use of this product other than the permitted use without the express written authorization of Becton Dickinson and Company is strictly prohibited.  
For Research Use Only. Not for use in diagnostic or therapeutic procedures. Not for resale.  
BD, BD Logo and all other trademarks are the property of Becton, Dickinson and Company. ©2011 BD

