

Technical Data Sheet

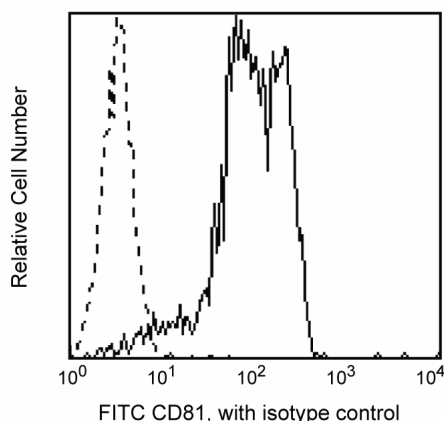
FITC Mouse Anti-Human CD81

Product Information

| | |
|------------------|---|
| Material Number: | 561956 |
| Alternate Name: | TAPA-1 |
| Size: | 25 tests |
| Vol. per Test: | 20 µl |
| Clone: | JS-81 |
| Isotype: | Mouse IgG1, κ |
| Reactivity: | QC Testing: Human Tested in Development: Dog, Rabbit |
| Workshop: | V B070 |
| Storage Buffer: | Aqueous buffered solution containing BSA and ≤0.09% sodium azide. |

Description

JS-81 identifies the newly clustered CD81 antigen, a 26 kDa, type III transmembrane protein (also known as TAPA-1) that is involved in cell growth and signal transduction. CD81 has a very broad cellular distribution, being expressed on cells of hematopoietic, neuroectodermal and mesenchymal origin. MAbs to CD81 have been shown to have anti-proliferative effects on different lymphoid cell lines, particularly those derived from large cell lymphomas. Immunoprecipitation studies reveal that CD81 is a component of a multimolecular complex which can include the Leu13 molecule, and the CD19 and CD21 molecules in B cells. MAbs to CD81 are reported to induce homotypic cell aggregation.



Profile of peripheral blood lymphocytes analyzed by flow cytometry

Preparation and Storage

Store undiluted at 4°C and protected from prolonged exposure to light. Do not freeze.

The monoclonal antibody was purified from tissue culture supernatant or ascites by affinity chromatography.

The antibody was conjugated with FITC under optimum conditions, and unreacted FITC was removed.

Application Notes

Application

| | |
|----------------|------------------|
| Flow cytometry | Routinely Tested |
|----------------|------------------|

Suggested Companion Products

| Catalog Number | Name | Size | Clone |
|----------------|------------------------------------|-----------|---------|
| 555748 | FITC Mouse IgG1, κ Isotype Control | 100 tests | MOPC-21 |
| 554656 | Stain Buffer (FBS) | 500 ml | (none) |

Product Notices

1. This reagent has been pre-diluted for use at the recommended Volume per Test. We typically use 1×10^6 cells in a 100-µl experimental sample (a test).
2. Please refer to www.bdbiosciences.com/pharmingen/protocols for technical protocols.
3. Source of all serum proteins is from USDA inspected abattoirs located in the United States.

BD Biosciences

bdbiosciences.com

| United States | Canada | Europe | Japan | Asia Pacific | Latin America/Caribbean |
|---------------|--------------|---------------|--------------|--------------|-------------------------|
| 877.232.8995 | 888.268.5430 | 32.53.720.550 | 0120.8555.90 | 65.6861.0633 | 0800.771.7157 |

For country-specific contact information, visit bdbiosciences.com/how_to_order/

Conditions: The information disclosed herein is not to be construed as a recommendation to use the above product in violation of any patents. BD Biosciences will not be held responsible for patent infringement or other violations that may occur with the use of our products. Purchase does not include or carry any right to resell or transfer this product either as a stand-alone product or as a component of another product. Any use of this product other than the permitted use without the express written authorization of Becton Dickinson and Company is strictly prohibited.

For Research Use Only. Not for use in diagnostic or therapeutic procedures. Not for resale.

BD, BD Logo and all other trademarks are the property of Becton, Dickinson and Company. ©2011 BD



4. Caution: Sodium azide yields highly toxic hydrazoic acid under acidic conditions. Dilute azide compounds in running water before discarding to avoid accumulation of potentially explosive deposits in plumbing.
5. For fluorochrome spectra and suitable instrument settings, please refer to our Fluorochrome Web Page at www.bdbiosciences.com/colors.
6. An isotype control should be used at the same concentration as the antibody of interest.

References

Bradbury LE, Kansas GS, Levy S, Evans RL, Tedder TF. The CD19/CD21 signal transducing complex of human B lymphocytes includes the target of antiproliferative antibody-1 and Leu-13 molecules. *J Immunol.* 1992; 149(9):2841-2850. (Biology)

Oren R, Takahashi S, Doss C, Levy R, Levy S. TAPA-1, the target of an antiproliferative antibody, defines a new family of transmembrane proteins. *Mol Cell Biol.* 1990; 10(8):4007-4015. (Biology)

Schick MR, Levy S. The TAPA-1 molecule is associated on the surface of B cells with HLA-DR molecules. *J Immunol.* 1993; 151(8):4090-4097. (Biology)