

Technical Data Sheet

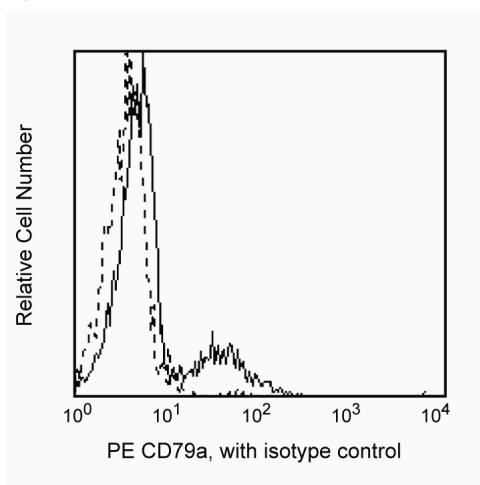
PE Mouse Anti-Human CD79a

Product Information

| | |
|-------------------------|---|
| Material Number: | 561942 |
| Alternate Name: | Igα, mb-1 |
| Size: | 25 tests |
| Vol. per Test: | 20 µl |
| Clone: | HM47 |
| Isotype: | Mouse IgG1, κ |
| Reactivity: | QC Testing: Human Cross Reactivity Confirmed in Development: Mouse |
| Workshop: | V cB017 |
| Storage Buffer: | Aqueous buffered solution containing BSA and ≤0.09% sodium azide. |

Description

Reacts with the cytoplasmic domain of a 47 kDa membrane glycoprotein present on B lymphocytes, also referred to as mb-1. It is expressed on B cells at various stages of differentiation, from pre-B cell stage, probably before expression of cytoplasmic μ chain, to plasma cell stage, in which it is detected only in the cytoplasm. CD79a associates with CD79b to form part of the B-cell receptor complex. It has been suggested that CD79a may play a role in mediating the transport of IgM to the cell surface. This antibody has been found to react on permeabilized A20 cells (mouse B cell line).



Profile of permeabilized peripheral blood lymphocytes with Cytofix/Cytoperm (Cat# 554714) analyzed on a FACScan (BDIS, San Jose, CA)

Preparation and Storage

Store undiluted at 4°C and protected from prolonged exposure to light. Do not freeze.

The monoclonal antibody was purified from tissue culture supernatant or ascites by affinity chromatography.

The antibody was conjugated with R-PE under optimum conditions, and unconjugated antibody and free PE were removed.

Application Notes

Application

| | |
|---|------------------|
| Intracellular staining (flow cytometry) | Routinely Tested |
|---|------------------|

Suggested Companion Products

| Catalog Number | Name | Size | Clone |
|----------------|--|-----------|---------|
| 555749 | PE Mouse IgG1, κ Isotype Control | 100 tests | MOPC-21 |
| 554714 | BD Cytofix/Cytoperm™ Fixation/Permeabilization Kit | 250 tests | (none) |

Product Notices

1. This reagent has been pre-diluted for use at the recommended Volume per Test. We typically use 1×10^6 cells in a 100-µl experimental sample (a test).
2. Please refer to www.bdbiosciences.com/pharmingen/protocols for technical protocols.
3. For fluorochrome spectra and suitable instrument settings, please refer to our Fluorochrome Web Page at www.bdbiosciences.com/colors.

BD Biosciences

bdbiosciences.com

| | | | | | |
|---------------|--------------|---------------|--------------|--------------|-------------------------|
| United States | Canada | Europe | Japan | Asia Pacific | Latin America/Caribbean |
| 877.232.8995 | 888.268.5430 | 32.53.720.550 | 0120.8555.90 | 65.6861.0633 | 0800.771.7157 |

For country-specific contact information, visit bdbiosciences.com/how_to_order/

Conditions: The information disclosed herein is not to be construed as a recommendation to use the above product in violation of any patents. BD Biosciences will not be held responsible for patent infringement or other violations that may occur with the use of our products. Purchase does not include or carry any right to resell or transfer this product either as a stand-alone product or as a component of another product. Any use of this product other than the permitted use without the express written authorization of Becton Dickinson and Company is strictly prohibited.

For Research Use Only. Not for use in diagnostic or therapeutic procedures. Not for resale.

BD, BD Logo and all other trademarks are the property of Becton, Dickinson and Company. ©2011 BD



4. Caution: Sodium azide yields highly toxic hydrazoic acid under acidic conditions. Dilute azide compounds in running water before discarding to avoid accumulation of potentially explosive deposits in plumbing.
5. Source of all serum proteins is from USDA inspected abattoirs located in the United States.
6. An isotype control should be used at the same concentration as the antibody of interest.

References

Mason DY, Cordell JL, Tse AG, et al. The IgM-associated protein mb-1 as a marker of normal and neoplastic B cells. *J Immunol.* 1991; 147(11):2474-2482. (Biology)

Sakaguchi N, Kashiwamura S, Kimoto M, Thalmann P, Melchers F. B lymphocyte lineage-restricted expression of mb-1, a gene with CD3-like structural properties. *EMBO J.* 1988; 7(11):3457-3464. (Biology)

Schlossman SF, Boumsell L, Gilks W, et al, ed. *Leukocyte Typing V: White Cell Differentiation Antigens*. New York: Oxford University Press; 1995. (Clone-specific)