

Technical Data Sheet

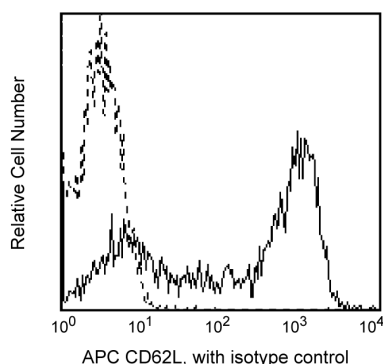
APC Mouse Anti-Human CD62L

Product Information

Material Number:	561916
Alternate Name:	L-selectin
Size:	25 tests
Vol. per Test:	20 µl
Clone:	DREG-56
Isotype:	Mouse IgG1, κ
Reactivity:	QC Testing: Human
Workshop:	V S056
Storage Buffer:	Aqueous buffered solution containing BSA and ≤0.09% sodium azide.

Description

Reacts with a 76-95 kDa glycoprotein referred to as L-selectin or LECAM-1. CD62L is expressed on neutrophils, monocytes, T- and B-lymphocyte subsets and NK cells. Dreg-56 antibody recognizes the same antigen as LAM-1, and specifically inhibits >90% of binding of human lymphocytes to high endothelial venules (HEV) in frozen sections of peripheral, but not mucosal lymphoid tissue. It thus defines L-selectin as a human lymphocyte homing receptor for peripheral lymph node HEV.



Profile of peripheral blood lymphocytes analyzed by flow cytometry.

Preparation and Storage

Store undiluted at 4°C and protected from prolonged exposure to light. Do not freeze.

The monoclonal antibody was purified from tissue culture supernatant or ascites by affinity chromatography.

The antibody was conjugated to APC under optimum conditions, and unconjugated antibody and free APC were removed.

Application Notes

Application

Flow cytometry	Routinely Tested
----------------	------------------

Suggested Companion Products

Catalog Number	Name	Size	Clone
555751	APC Mouse IgG1, κ Isotype Control	100 tests	MOPC-21
554656	Stain Buffer (FBS)	500 ml	(none)
555899	Lysing Buffer	100 ml	(none)

Product Notices

1. This reagent has been pre-diluted for use at the recommended Volume per Test. We typically use 1×10^6 cells in a 100-µl experimental sample (a test).
2. For fluorochrome spectra and suitable instrument settings, please refer to our Fluorochrome Web Page at www.bdbiosciences.com/colors.
3. Caution: Sodium azide yields highly toxic hydrazoic acid under acidic conditions. Dilute azide compounds in running water before discarding to avoid accumulation of potentially explosive deposits in plumbing.
4. Source of all serum proteins is from USDA inspected abattoirs located in the United States.

BD Biosciences

bdbiosciences.com

United States	Canada	Europe	Japan	Asia Pacific	Latin America/Caribbean
877.232.8995	888.268.5430	32.53.720.550	0120.8555.90	65.6861.0633	0800.771.7157

For country-specific contact information, visit bdbiosciences.com/how_to_order/

Conditions: The information disclosed herein is not to be construed as a recommendation to use the above product in violation of any patents. BD Biosciences will not be held responsible for patent infringement or other violations that may occur with the use of our products. Purchase does not include or carry any right to resell or transfer this product either as a stand-alone product or as a component of another product. Any use of this product other than the permitted use without the express written authorization of Becton Dickinson and Company is strictly prohibited.

For Research Use Only. Not for use in diagnostic or therapeutic procedures. Not for resale.

BD, BD Logo and all other trademarks are the property of Becton, Dickinson and Company. ©2011 BD



5. This APC-conjugated reagent can be used in any flow cytometer equipped with a dye, HeNe, or red diode laser.
6. An isotype control should be used at the same concentration as the antibody of interest.
7. Please refer to www.bdbiosciences.com/pharmingen/protocols for technical protocols.

References

Kishimoto TK, Jutila MA, Butcher EC. Identification of a human peripheral lymph node homing receptor: a rapidly down-regulated adhesion molecule. *Proc Natl Acad Sci U S A*. 1990; 87(6):2244-2248. (Biology)

Kishimoto TK, Warnock RA, Jutila MA, et al. Antibodies against human neutrophil LECAM-1 (LAM-1/Leu-8/DREG-56 antigen) and endothelial cell ELAM-1 inhibit a common CD18-independent adhesion pathway in vitro. *Blood*. 1991; 78(3):805-811. (Biology)

Schlossman SF, Boumsell L, Gilks W, et al, ed. *Leukocyte Typing V: White Cell Differentiation Antigens*. New York: Oxford University Press; 1995. (Clone-specific)