

## Technical Data Sheet

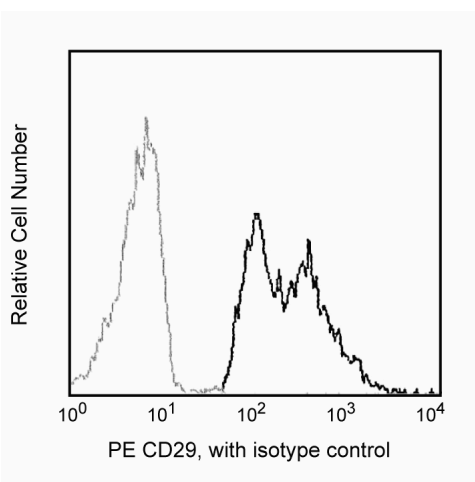
## PE Mouse Anti-Human CD29

## Product Information

<b>Material Number:</b>	<b>561795</b>
<b>Alternate Name:</b>	Integrin $\beta$ 1 Chain
<b>Size:</b>	25 tests
<b>Vol. per Test:</b>	20 $\mu$ l
<b>Clone:</b>	MAR4
<b>Isotype:</b>	Mouse IgG1, $\kappa$
<b>Reactivity:</b>	QC Testing: Human
<b>Workshop:</b>	VI A093
<b>Storage Buffer:</b>	Aqueous buffered solution containing BSA and $\leq 0.09\%$ sodium azide.

## Description

Reacts with the 130 kDa integrin  $\beta$ 1 subunit that is expressed as a heterodimeric complex with one of six distinct  $\alpha$  subunits, comprising the very late activation antigen (VLA) subfamily of adhesion receptors. The  $\beta$ 1 subunit has a broad tissue distribution; it is expressed on lymphocytes, monocytes and weakly on granulocytes, but not on erythrocytes. These receptors are involved in a variety of cell-cell and cell-matrix interactions.



*Profile of peripheral blood lymphocytes analyzed on a FACScan (BDIS, San Jose, CA)*

## Preparation and Storage

Store undiluted at 4°C and protected from prolonged exposure to light. Do not freeze.

The monoclonal antibody was purified from tissue culture supernatant or ascites by affinity chromatography.

The antibody was conjugated with R-PE under optimum conditions, and unconjugated antibody and free PE were removed.

## Application Notes

## Application

Flow cytometry	Routinely Tested
----------------	------------------

## Suggested Companion Products

Catalog Number	Name	Size	Clone
555749	PE Mouse IgG1, $\kappa$ Isotype Control	100 tests	MOPC-21
554656	Stain Buffer (FBS)	500 ml	(none)

## Product Notices

1. This reagent has been pre-diluted for use at the recommended Volume per Test. We typically use  $1 \times 10^6$  cells in a 100- $\mu$ l experimental sample (a test).
2. Caution: Sodium azide yields highly toxic hydrazoic acid under acidic conditions. Dilute azide compounds in running water before discarding to avoid accumulation of potentially explosive deposits in plumbing.
3. Source of all serum proteins is from USDA inspected abattoirs located in the United States.
4. Please refer to [www.bdbiosciences.com/pharmingen/protocols](http://www.bdbiosciences.com/pharmingen/protocols) for technical protocols.

## BD Biosciences

[bdbiosciences.com](http://bdbiosciences.com)

United States	Canada	Europe	Japan	Asia Pacific	Latin America/Caribbean
877.232.8995	888.268.5430	32.53.720.550	0120.8555.90	65.6861.0633	0800.771.7157

For country-specific contact information, visit [bdbiosciences.com/how\\_to\\_order/](http://bdbiosciences.com/how_to_order/)

Conditions: The information disclosed herein is not to be construed as a recommendation to use the above product in violation of any patents. BD Biosciences will not be held responsible for patent infringement or other violations that may occur with the use of our products. Purchase does not include or carry any right to resell or transfer this product either as a stand-alone product or as a component of another product. Any use of this product other than the permitted use without the express written authorization of Becton Dickinson and Company is strictly prohibited.

For Research Use Only. Not for use in diagnostic or therapeutic procedures. Not for resale.

BD, BD Logo and all other trademarks are the property of Becton, Dickinson and Company. ©2011 BD



5. For fluorochrome spectra and suitable instrument settings, please refer to our Fluorochrome Web Page at [www.bdbiosciences.com/colors](http://www.bdbiosciences.com/colors).
6. An isotype control should be used at the same concentration as the antibody of interest.

## References

Hemler ME. VLA proteins in the integrin family: structures, functions, and their role on leukocytes. *Annu Rev Immunol.* 1990; 8:365-400. (Biology)

Hynes RO. Integrins: versatility, modulation, and signaling in cell adhesion. *Cell.* 1992; 69(1):11-25. (Biology)