

## Technical Data Sheet

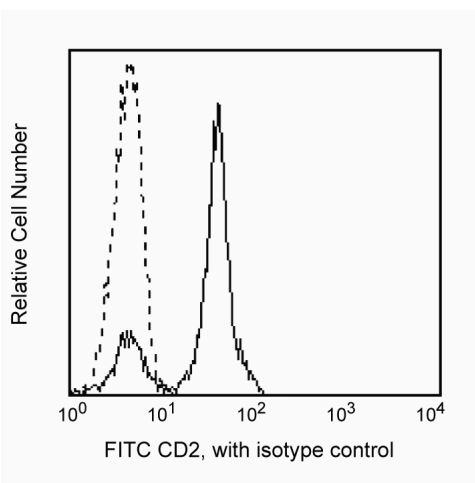
## FITC Mouse Anti-Human CD2

## Product Information

<b>Material Number:</b>	<b>561759</b>
<b>Size:</b>	25 tests
<b>Vol. per Test:</b>	20 µl
<b>Clone:</b>	RPA-2.10
<b>Isotype:</b>	Mouse IgG1, κ
<b>Reactivity:</b>	QC Testing: Human
<b>Workshop:</b>	IV T085
<b>Storage Buffer:</b>	Aqueous buffered solution containing BSA and ≤0.09% sodium azide.

## Description

CD2 reacts with the 50 kDa single-chain transmembrane glycoprotein, also known as LFA-2 or the receptor for sheep erythrocytes. CD2 belongs to the immunoglobulin superfamily of proteins along with its ligand LFA-3, CD58. It is present on about 80-90% of human peripheral blood lymphocytes, greater than 95% of thymocytes, all T lymphocytes that form E-rosettes and a subset of NK cells. CD2 plays a role in T-cell signaling and in lymphocyte adhesion.



Profile of peripheral blood lymphocytes analyzed on a FACSscan (BDIS, San Jose, CA)

## Preparation and Storage

Store undiluted at 4°C and protected from prolonged exposure to light. Do not freeze.

The monoclonal antibody was purified from tissue culture supernatant or ascites by affinity chromatography.

The antibody was conjugated with FITC under optimum conditions, and unreacted FITC was removed.

## Application Notes

## Application

Flow cytometry	Routinely Tested
----------------	------------------

## Suggested Companion Products

Catalog Number	Name	Size	Clone
555748	FITC Mouse IgG1, κ Isotype Control	100 tests	MOPC-21
554656	Stain Buffer (FBS)	500 ml	(none)

## Product Notices

1. This reagent has been pre-diluted for use at the recommended Volume per Test. We typically use  $1 \times 10^6$  cells in a 100-µl experimental sample (a test).
2. Please refer to [www.bdbiosciences.com/pharmingen/protocols](http://www.bdbiosciences.com/pharmingen/protocols) for technical protocols.
3. Caution: Sodium azide yields highly toxic hydrazoic acid under acidic conditions. Dilute azide compounds in running water before discarding to avoid accumulation of potentially explosive deposits in plumbing.
4. Source of all serum proteins is from USDA inspected abattoirs located in the United States.
5. For fluorochrome spectra and suitable instrument settings, please refer to our Fluorochrome Web Page at [www.bdbiosciences.com/colors](http://www.bdbiosciences.com/colors).

## BD Biosciences

[bdbiosciences.com](http://bdbiosciences.com)

United States	Canada	Europe	Japan	Asia Pacific	Latin America/Caribbean
877.232.8995	888.268.5430	32.53.720.550	0120.8555.90	65.6861.0633	0800.771.7157

For country-specific contact information, visit [bdbiosciences.com/how\\_to\\_order/](http://bdbiosciences.com/how_to_order/)

Conditions: The information disclosed herein is not to be construed as a recommendation to use the above product in violation of any patents. BD Biosciences will not be held responsible for patent infringement or other violations that may occur with the use of our products. Purchase does not include or carry any right to resell or transfer this product either as a stand-alone product or as a component of another product. Any use of this product other than the permitted use without the express written authorization of Becton Dickinson and Company is strictly prohibited.

For Research Use Only. Not for use in diagnostic or therapeutic procedures. Not for resale.

BD, BD Logo and all other trademarks are the property of Becton, Dickinson and Company. ©2011 BD



## References

Hahn WC, Burakoff SJ, Bierer BE. Signal transduction pathways involved in T cell receptor-induced regulation of CD2 avidity for CD58. *J Immunol.* 1993; 150(7):2607-2619. (Biology)

Knapp W, Dorken B, Rieber EP, et al, ed. *Leucocyte Typing IV*. New York: Oxford University Press; 1989:1-1208. (Clone-specific)