

Technical Data Sheet

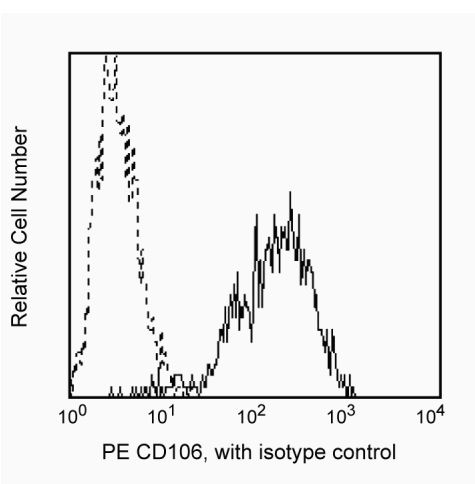
PE Mouse Anti-Human CD106

Product Information

Material Number:	561679
Alternate Name:	VCAM-1
Size:	25 tests
Vol. per Test:	20 µl
Clone:	51-10C9
Isotype:	Mouse IgG1, κ
Reactivity:	QC Testing: Human
Workshop:	V E112
Storage Buffer:	Aqueous buffered solution containing BSA and ≤0.09% sodium azide.

Description

Reacts with the 100-110 kDa glycoprotein vascular cell adhesion molecule-1 (VCAM-1) (also known as INCAM-110), that is expressed at high levels on the surface of cytokine-stimulated endothelium, and at minimal levels on unstimulated endothelium. VCAM-1 serves as a ligand for the leukocyte integrins α4β1 (CD49d/CD29 complex). MAb 51-10C9 inhibits the in vitro binding of lymphocytes and monocytes to VCAM-1 on stimulated endothelium.



Profile of TNF-α activated HUVEC analyzed on a FACSscan (BDIS, San Jose, CA)

Preparation and Storage

Store undiluted at 4°C and protected from prolonged exposure to light. Do not freeze.

The monoclonal antibody was purified from tissue culture supernatant or ascites by affinity chromatography.

The antibody was conjugated with R-PE under optimum conditions, and unconjugated antibody and free PE were removed.

Application Notes

Application

Flow cytometry

Routinely Tested

Suggested Companion Products

Catalog Number	Name	Size	Clone
555749	PE Mouse IgG1, κ Isotype Control	100 tests	MOPC-21

Product Notices

1. This reagent has been pre-diluted for use at the recommended Volume per Test. We typically use 1×10^6 cells in a 100-µl experimental sample (a test).
2. Please refer to www.bdbiosciences.com/pharmingen/protocols for technical protocols.
3. For fluorochrome spectra and suitable instrument settings, please refer to our Fluorochrome Web Page at www.bdbiosciences.com/colors.
4. Caution: Sodium azide yields highly toxic hydrazoic acid under acidic conditions. Dilute azide compounds in running water before discarding to avoid accumulation of potentially explosive deposits in plumbing.
5. Source of all serum proteins is from USDA inspected abattoirs located in the United States.

BD Biosciences

bdbiosciences.com

United States	Canada	Europe	Japan	Asia Pacific	Latin America/Caribbean
877.232.8995	888.268.5430	32.53.720.550	0120.8555.90	65.6861.0633	0800.771.7157

For country-specific contact information, visit bdbiosciences.com/how_to_order/

Conditions: The information disclosed herein is not to be construed as a recommendation to use the above product in violation of any patents. BD Biosciences will not be held responsible for patent infringement or other violations that may occur with the use of our products. Purchase does not include or carry any right to resell or transfer this product either as a stand-alone product or as a component of another product. Any use of this product other than the permitted use without the express written authorization of Becton Dickinson and Company is strictly prohibited.

For Research Use Only. Not for use in diagnostic or therapeutic procedures. Not for resale.

BD, BD Logo and all other trademarks are the property of Becton, Dickinson and Company. ©2011 BD



References

- Bevilacqua MP, Pober JS, Mendrick DL, Cotran RS, Gimbrone MA Jr. Identification of an inducible endothelial-leukocyte adhesion molecule. *Proc Natl Acad Sci U S A*. 1987; 84(24):9238-9242. (Biology)
- Schlossman SF, Boumsell L, Gilks W, et al, ed. *Leukocyte Typing V: White Cell Differentiation Antigens*. New York: Oxford University Press; 1995. (Clone-specific)
- Taichman DB, Cybulsky MI, Djaffar I, et al. Tumor cell surface alpha 4 beta 1 integrin mediates adhesion to vascular endothelium: demonstration of an interaction with the N-terminal domains of INCAM-110/VCAM-1. *Cell Regul*. 1991; 2(5):347-355. (Biology)