

Technical Data Sheet

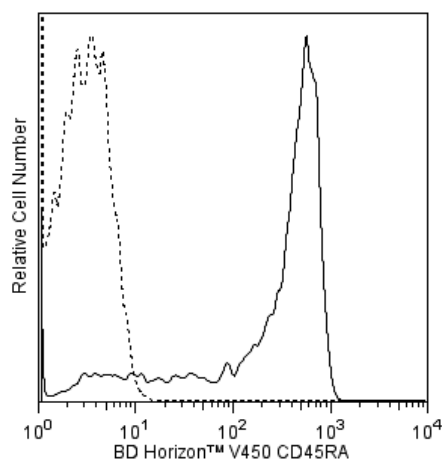
V450 Mouse Anti-Human CD45RA**Product Information**

Material Number:	561220
Size:	50 tests
Vol. per Test:	5 µl
Clone:	5H9
Isotype:	Mouse IgG1, κ
Reactivity:	Human
	QC Testing: Rhesus, Baboon or Cynomolgus
Storage Buffer:	Aqueous buffered solution containing protein stabilizer and ≤0.09% sodium azide.

Description

The 5H9 monoclonal antibody specifically binds to the human form of the leukocyte common antigen (LCA), CD45RA. This clone also crossreacts with CD45RA expressed by peripheral blood lymphocytes, monocytes and some granulocytes from rhesus macaque, baboon, and cynomolgus monkeys. The observed frequency of CD45RA positive lymphocytes is higher in the non-human primate compared to what is seen with normal human donor lymphocytes.

The antibody is conjugated to BD Horizon™ V450, which has been developed for use in multicolor flow cytometry experiments and is available exclusively from BD Biosciences. It is excited by the Violet laser Ex max of 406 nm and has an Em Max at 450 nm. Conjugates with BD Horizon™ V450 can be used in place of Pacific Blue™ conjugates.



Flow cytometric analysis of CD45RA expression on Rhesus macaque peripheral blood lymphocytes. Rhesus macaque whole blood was stained with BD Horizon™ V450 Mouse Anti-Human CD45RA antibody (Cat. No. 561220; solid line histogram) or with a BD Horizon™ V450 Mouse IgG1, κ Isotype Control (Cat. No. 560373; dashed line histogram). The erythrocytes were lysed with BD PharmLyse™ Lysing Buffer (Cat. No. 555899). The fluorescence histograms were derived from events with the forward and side light-scatter characteristics of viable lymphocytes. Flow cytometry was performed using a BD™ LSR II Flow Cytometer System.

Preparation and Storage

The monoclonal antibody was purified from tissue culture supernatant or ascites by affinity chromatography.

The antibody was conjugated with BD Horizon™ V450 under optimum conditions, and unreacted BD Horizon™ V450 was removed.

Store undiluted at 4°C and protected from prolonged exposure to light. Do not freeze.

Application Notes**Application**

Flow cytometry	Routinely Tested
----------------	------------------

BD Biosciences

bdbiosciences.com

United States	Canada	Europe	Japan	Asia Pacific	Latin America/Caribbean
877.232.8995	888.268.5430	32.53.720.550	0120.8555.90	65.6861.0633	0800.771.7157

For country-specific contact information, visit bdbiosciences.com/how_to_order/

Conditions: The information disclosed herein is not to be construed as a recommendation to use the above product in violation of any patents. BD Biosciences will not be held responsible for patent infringement or other violations that may occur with the use of our products. Purchase does not include or carry any right to resell or transfer this product either as a stand-alone product or as a component of another product. Any use of this product other than the permitted use without the express written authorization of Becton Dickinson and Company is strictly prohibited.

For Research Use Only. Not for use in diagnostic or therapeutic procedures. Not for resale.

BD, BD Logo and all other trademarks are the property of Becton, Dickinson and Company. ©2011 BD



Suggested Companion Products

Catalog Number	Name	Size	Clone
560373	V450 Mouse IgG1, κ Isotype Control	0.1 mg	MOPC-21
555899	Lysing Buffer	100 ml	(none)
554656	Stain Buffer (FBS)	500 ml	(none)

Product Notices

1. This reagent has been pre-diluted for use at the recommended Volume per Test. We typically use 1×10^6 cells in a 100- μ l experimental sample (a test).
2. An isotype control should be used at the same concentration as the antibody of interest.
3. BD Horizon™ V450 has a maximum absorption of 406 nm and maximum emission of 450 nm. Before staining with this reagent, please confirm that your flow cytometer is capable of exciting the fluorochrome and discriminating the resulting fluorescence.
4. Caution: Sodium azide yields highly toxic hydrazoic acid under acidic conditions. Dilute azide compounds in running water before discarding to avoid accumulation of potentially explosive deposits in plumbing.
5. Pacific Blue™ is a trademark of Molecular Probes, Inc., Eugene, OR.
6. For fluorochrome spectra and suitable instrument settings, please refer to our Fluorochrome Web Page at www.bdbiosciences.com/colors.
7. Please refer to www.bdbiosciences.com/pharming/en/protocols for technical protocols.

References

Knapp W, Dorken B, Rieber EP, et al, ed. *Leucocyte Typing IV*. New York: Oxford University Press; 1989:1-1208. (Biology)

Reimann KA, Waite BC, Lee-Parritz DE, et al. Use of human leukocyte-specific monoclonal antibodies for clinically immunophenotyping lymphocytes of rhesus monkeys. *Cytometry*. 1994; 17(1):102-108. (Biology)

Sopper S, Stahl-Hennig C, Demuth M, Johnston IC, Dorries R, ter Meulen V. Lymphocyte subsets and expression of differentiation markers in blood and lymphoid organs of rhesus monkeys. *Cytometry*. 1997; 29(4):351-362. (Biology)