

## Technical Data Sheet

## V450 Mouse anti-Human FoxP3

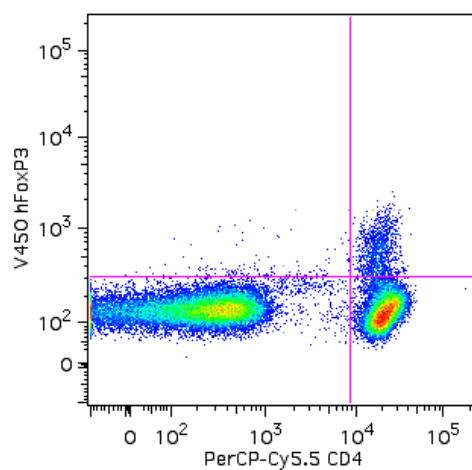
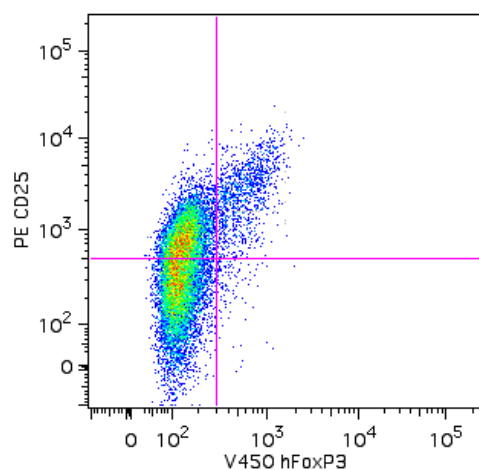
## Product Information

<b>Material Number:</b>	<b>561182</b>
<b>Alternate Name:</b>	Forkhead box protein P3; Scurfin; AIID; IPEX; JM2; DIETER; PIDX; XPID
<b>Size:</b>	100 tests
<b>Vol. per Test:</b>	5 µl
<b>Clone:</b>	236A/E7
<b>Immunogen:</b>	Human full-length FoxP3 Recombinant Protein
<b>Isotype:</b>	Mouse (BALB/c) IgG1, κ
<b>Reactivity:</b>	QC Testing: Human
<b>Storage Buffer:</b>	Aqueous buffered solution containing protein stabilizer and ≤0.09% sodium azide.

## Description

The 236A/E7 antibody reacts with the human FoxP3 (Forkhead box protein P3) transcription factor, a member of the forkhead or winged helix family of transcription factors. The expression of FoxP3, also known as Scurfin, IPEX and JM2, has been found to be associated with CD4+ CD25+ regulatory T cells and represents a specific marker for these cells. Flow cytometric analysis has shown that FoxP3 is expressed by the majority of CD4+ CD25+ (high) T cells in peripheral blood while less than half of CD4+ CD25+ (intermediate) cell population are FoxP3 positive. Approximately 5-10% of peripheral CD4+ cells are CD4+ CD25+ T regulatory cells. T regulatory cells are thought to play a critical role in the control of T cell mediated autoimmunity by suppressing the proliferation and cytokine production of other T cells. To support this hypothesis, it has been found that *Foxp3* is mutated in scurfy (*sf*) mice. Cumulative evidence suggests that the 236A/E7 antibody recognizes epitopes from both isoforms of Exon 2 alternatively-spliced variants and is located in the region between Exon 2 and the Zn/LZ domains (aa 105-235).

The antibody is conjugated to BD Horizon™ V450, which has been developed for use in multicolor flow cytometry experiments and is available exclusively from BD Biosciences. It is excited by the Violet laser Ex max of 406 nm and has an Em Max at 450 nm. Conjugates with BD Horizon™ V450 can be used in place of Pacific Blue™ conjugates.

**Flow cytometric analysis of FoxP3 expressed in human lymphocytes.**

Human peripheral blood mononuclear cells (PBMC) were stained with PerCP-Cy5.5 anti-human CD4 (clone L200, Cat. No. 552838) and PE anti-human CD25 (Clone 2A3, Cat. No. 341009) simultaneously. The PBMC were fixed and permeabilized (see Recommended Assay Procedure) followed by intracellular staining with BD Horizon™ V450 Mouse anti-Human FoxP3 (clone 236A/E7; Cat No. 561182). Two-color flow cytometric dot plots were derived from gated events based on the light scattering characteristics of lymphocytes and fluorescence characteristics of CD4+ or CD25+, respectively, shown as either FoxP3 versus CD25 (left panel) or CD4 versus FoxP3 (right panel). Flow cytometry was performed on a BD LSRII™ Flow Cytometer System.

## BD Biosciences

bdbiosciences.com

<b>United States</b>	<b>Canada</b>	<b>Europe</b>	<b>Japan</b>	<b>Asia Pacific</b>	<b>Latin America/Caribbean</b>
877.232.8995	888.268.5430	32.53.720.550	0120.8555.90	65.6861.0633	0800.771.7157

For country-specific contact information, visit [bdbiosciences.com/how\\_to\\_order/](http://bdbiosciences.com/how_to_order/)

Conditions: The information disclosed herein is not to be construed as a recommendation to use the above product in violation of any patents. BD Biosciences will not be held responsible for patent infringement or other violations that may occur with the use of our products. Purchase does not include or carry any right to resell or transfer this product either as a stand-alone product or as a component of another product. Any use of this product other than the permitted use without the express written authorization of Becton Dickinson and Company is strictly prohibited.

For Research Use Only. Not for use in diagnostic or therapeutic procedures. Not for resale.

BD, BD Logo and all other trademarks are the property of Becton, Dickinson and Company. ©2011 BD



## Preparation and Storage

The monoclonal antibody was purified from tissue culture supernatant or ascites by affinity chromatography.

The antibody was conjugated with BD Horizon™ V450 under optimum conditions, and unreacted BD Horizon™ V450 was removed.

Store undiluted at 4°C and protected from prolonged exposure to light. Do not freeze.

## Application Notes

### Application

Intracellular staining (flow cytometry)	Routinely Tested
---	------------------

### Recommended Assay Procedure:

#### Cell Preparation and Staining Procedures for Fluorochrome-Conjugated Anti-Human FoxP3 Antibody

1. Bring the buffers to room temperature (RT) before use. Prepare working solutions of the BD Pharmingen Human FoxP3 Buffer Set Cat. No. 560098 (For the buffer preparation, please see the Technical Data Sheet of Cat. No. 560098 buffer instructions for details).
2. Prepare human PBMC. Suspend the cells with BD Pharmingen™ Stain Buffer (FBS)\* to ten million cells/ml.
3. Pipette appropriate amount of surface staining reagent to the bottom of each 12 x 75 mm tube.
4. Add 100 µl of cells per tube, vortex, incubate for 20 minutes at RT protected from light.
5. Add 2 ml of wash buffer. Centrifuge 250 x g for 10 minutes to pellet the cells and remove wash buffer.
6. To fix the cells, gently resuspend the cell pellet in residual volume of wash buffer and then add 2 ml of 1x Human FoxP3 Buffer A. Vortex. Incubate for 10 minutes at RT in the dark.
7. Centrifuge 500 x g for 5 minutes, and remove fixative. Caution: Be aware the pellet is buoyant.
8. To wash cells, resuspend each cell pellet in 2 ml of BD Pharmingen Stain Buffer (FBS)\*, and centrifuge 500 x g for 5 minutes. Remove wash buffer.
9. To permeabilize the cells, gently resuspend pellet in residual volume of wash buffer and then add 0.5 ml of 1x working solution Human FoxP3 Buffer C to each tube. Vortex. Incubate for 30 minutes at RT protected from light.
10. To wash cells, add 2 ml of BD Pharmingen Stain Buffer (FBS)\* to each tube, centrifuge 500 x g for 5 minutes at RT. Remove buffer and repeat wash step. Remove buffer.
11. Add conjugated FoxP3 antibody at appropriate concentrations to resuspend the pellet. Gently shake or vortex.
12. Incubate for 30 minutes in the dark at RT.
13. Repeat wash step #10.
14. Resuspend in wash buffer and analyze immediately.

*Optional Add 300 µl of 1% formaldehyde in 1x PBS and store at 4°C. Analyze cells within 24 hours.*

\* We recommend using the BD Pharmingen™ Stain Buffer (FBS; Cat No. 554656) for all wash steps and covering tubes during incubation steps with caps or parafilm. We also recommend optimizing forward scatter and side scatter voltages to visualize lymphocytes as separate from debris, red cell ghosts and/or platelets before acquisition.

### Suggested Companion Products

Catalog Number	Name	Size	Clone
560373	V450 Mouse IgG1, κ Isotype Control	0.1 mg	MOPC-21
560098	Human FoxP3 Buffer Set	100 tests	(none)
552838	PerCP-Cy™5.5 Mouse Anti-Human CD4	50 tests	L200
554656	Stain Buffer (FBS)	500 ml	(none)
341009	PE CD25	NA	2A3
555432	PE Mouse Anti-Human CD25	100 tests	M-A251

### Product Notices

1. This reagent has been pre-diluted for use at the recommended Volume per Test. We typically use  $1 \times 10^6$  cells in a 100-µl experimental sample (a test).
2. An isotype control should be used at the same concentration as the antibody of interest.
3. BD Horizon™ V450 has a maximum absorption of 406 nm and maximum emission of 450 nm. Before staining with this reagent, please confirm that your flow cytometer is capable of exciting the fluorochrome and discriminating the resulting fluorescence.
4. Caution: Sodium azide yields highly toxic hydrazoic acid under acidic conditions. Dilute azide compounds in running water before discarding to avoid accumulation of potentially explosive deposits in plumbing.
5. For fluorochrome spectra and suitable instrument settings, please refer to our Fluorochrome Web Page at [www.bdbiosciences.com/colors](http://www.bdbiosciences.com/colors).
6. Please refer to [www.bdbiosciences.com/pharmingen/protocols](http://www.bdbiosciences.com/pharmingen/protocols) for technical protocols.
7. Pacific Blue™ is a trademark of Molecular Probes, Inc., Eugene, OR.

### References

Alvaro T, Lejeune M, Salvado MT, et al. Outcome in Hodgkin's lymphoma can be predicted from the presence of accompanying cytotoxic and regulatory T cells. *Clin Cancer Res*. 2005; 11(4):1467-1473. (Clone-specific: Immunohistochemistry)

Brunkow ME, Jeffery EW, Hjerrild KA, et al. Disruption of a new forkhead/winged-helix protein, scurfy, results in the fatal lymphoproliferative disorder of the scurfy mouse. *Nat Genet.* 2001; 27(1):68-73. (Biology)

Fox BC, Bignone PA, Brown PJ, Banham AH. Defense of the clone: antibody 259D effectively labels human FOXP3 in a variety of applications. *Blood.* 2008; 111(7):3897-3899. (Clone-specific: Western blot)

Lennon G, Auffray C, Polymeropoulos M, Soares MB. Consortium: an integrated molecular analysis of genomes and their expression. *Genomics.* 1996; 33(1):151-152. (Biology)

Roncador G, Brown PJ, Maestre L, et al. Analysis of FOXP3 protein expression in human CD4+CD25+ regulatory T cells at the single-cell level. *Eur J Immunol.* 2005; 35(6):1681-1691. (Immunogen: Flow cytometry)

Roncador G, Garcia JF, Maestre L, et al. FOXP3, a selective marker for a subset of adult T-cell leukaemia/lymphoma. *Leukemia.* 2005; 19(12):2247-2253. (Clone-specific: Immunohistochemistry)

Wildin RS, Ramsdell F, Peake J, et al. X-linked neonatal diabetes mellitus, enteropathy and endocrinopathy syndrome is the human equivalent of mouse scurfy. *Nat Genet.* 2001; 27(1):18-20. (Biology)

Wolf D, Wolf AM, Rumpold H, et al. The expression of the regulatory T cell-specific forkhead box transcription factor FoxP3 is associated with poor prognosis in ovarian cancer. *Clin Cancer Res.* 2005; 11(23):8326-8331. (Biology)