

Technical Data Sheet

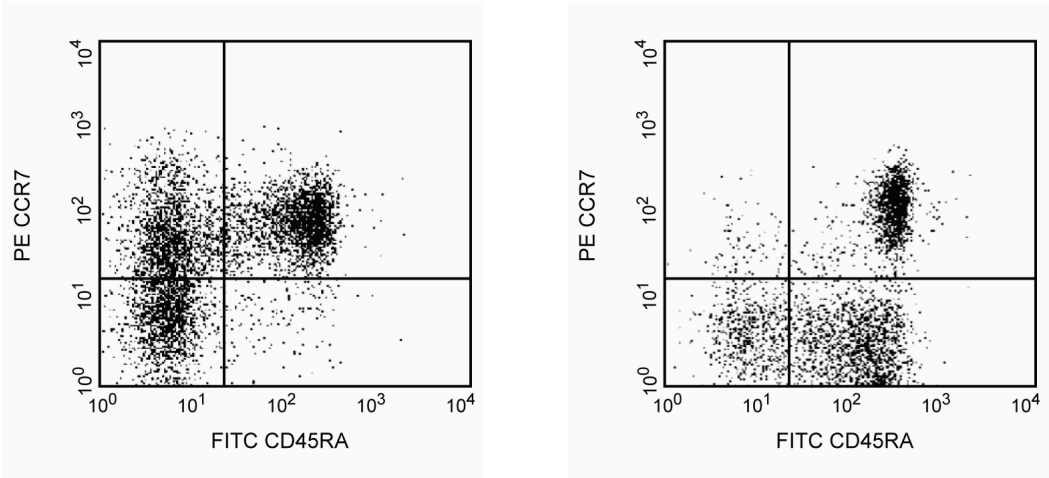
PE Rat Anti-Human CD197 (CCR7)

Product Information

Material Number:	561008
Alternate Name:	CCR7, BLR-2, EBI-1, CMKBR7
Size:	25 tests
Vol. per Test:	20 µl
Clone:	3D12
Immunogen:	Human CCR7 protein
Isotype:	Rat IgG2a, κ
Reactivity:	QC Testing: Human
Storage Buffer:	Aqueous buffered solution containing BSA and ≤0.09% sodium azide.

Description

The monoclonal antibody 3D12 reacts with the human CC chemokine receptor, CCR7. CCR7 (previously known as BLR-2, EBI-1 and CMKBR7), a seven-transmembrane, G-protein-coupled receptor, is the specific receptor for CC chemokines, MIP-3β/Exodus 3/ELC/ CCL19 and 6Ckine/Exodus 2/SLC/TCA4/CCL21. It has been shown that CCR7 mRNA is expressed mainly in lymphoid tissues including spleen, lymph nodes and tonsil. CCR7 mRNA was also detected in peripheral T and B lymphocytes, in bone marrow and cord blood CD34-positive cells and mature dendritic cells. The human CCR7 gene, unlike other CC chemokine receptor genes, has been mapped to chromosome 17q12. The immunogen used to generate 3D12 hybridoma was the N-terminus as well as parts of the second extracellular loop of human CCR7 protein. The monoclonal antibody 3D12 recognizes an epitope mapping to the N-terminus of human CCR7.



**Detection of CCR7 expression on CD4 and CD8-positive human peripheral lymphocytes by PE-conjugated anti-human CCR7 antibody 3D12.** Human PBMC were stained with 20 µl/test of PE-conjugated 3D12 and anti-human CD45RA-FITC (Cat. No. 555488). The data shown are derived from the CD4-positive (based on staining with anti-human CD4-APC, Cat. No. 555349, left panel) and CD8-positive (based on staining with anti-human CD8-APC, Cat. No. 555369, right panel) lymphocyte gated populations and displayed as bivariate dot plots.

Preparation and Storage

The monoclonal antibody was purified from tissue culture supernatant or ascites by affinity chromatography. The antibody was conjugated with R-PE under optimum conditions, and unconjugated antibody and free PE were removed. Store undiluted at 4°C and protected from prolonged exposure to light. Do not freeze.

Application Notes

Application

Flow cytometry	Routinely Tested
----------------	------------------

Recommended Assay Procedure:

The PE-conjugated 3D12 antibody is convenient for the immunofluorescent staining and flow cytometric analyses of human leukocytes and cell

BD Biosciences

United States	Canada	Europe	Japan	Asia Pacific	Latin America/Caribbean
877.232.8995	888.268.5430	32.53.720.550	0120.8555.90	65.6861.0633	0800.771.7157

For country-specific contact information, visit [bdbiosciences.com/how\\_to\\_order/](http://bdbiosciences.com/how_to_order/)

Conditions: The information disclosed herein is not to be construed as a recommendation to use the above product in violation of any patents. BD Biosciences will not be held responsible for patent infringement or other violations that may occur with the use of our products. Purchase does not include or carry any right to resell or transfer this product either as a stand-alone product or as a component of another product. Any use of this product other than the permitted use without the express written authorization of Becton Dickinson and Company is strictly prohibited.

For Research Use Only. Not for use in diagnostic or therapeutic procedures. Not for resale.

BD, BD Logo and all other trademarks are the property of Becton, Dickinson and Company. ©2011 BD



lines that express CCR7 (see figure). Chemokine receptors are known to internalize during manipulation resulting in low frequency expression. Immunophenotyping studies of chemokine receptors need to be performed on freshly collected whole blood (<24 hours). Incubation with the antibody should be done at 4°C in the dark. Cellular manipulation, such as Ficoll separation, freezing, or exposure to cold temperatures prior to staining have been shown to cause a decrease in staining intensity and inconsistent results.

A multiple-step staining procedure is strongly recommended to amplify immunofluorescent signals in the flow cytometric analysis of human CCR7 expression. Purified anti-human CCR7, clone 3D12, Cat. No. 552175 and a 3-step staining procedure is recommended for detecting low frequency expression.

### Suggested Companion Products

Catalog Number	Name	Size	Clone
555488	FITC Mouse Anti-Human CD45RA	100 tests	HI100
555349	APC Mouse Anti-Human CD4	100 tests	RPA-T4
555369	APC Mouse Anti-Human CD8	100 tests	RPA-T8
555844	PE Rat IgG2a, $\kappa$ Isotype Control	100 tests	R35-95

### Product Notices

1. This reagent has been pre-diluted for use at the recommended Volume per Test. We typically use  $1 \times 10^6$  cells in a 100- $\mu$ l experimental sample (a test).
2. Since applications vary, each investigator should titrate the reagent to obtain optimal results.
3. Please refer to [www.bdbiosciences.com/pharming/en/protocols](http://www.bdbiosciences.com/pharming/en/protocols) for technical protocols.
4. For fluorochrome spectra and suitable instrument settings, please refer to our Fluorochrome Web Page at [www.bdbiosciences.com/colors](http://www.bdbiosciences.com/colors).
5. Caution: Sodium azide yields highly toxic hydrazoic acid under acidic conditions. Dilute azide compounds in running water before discarding to avoid accumulation of potentially explosive deposits in plumbing.
6. Source of all serum proteins is from USDA inspected abattoirs located in the United States.

### References

Lipp M, Burgstahler R, Muller G, et al. Functional organization of secondary lymphoid organs by the chemokine system. *Curr Top Microbiol Immunol*. 2000; 251:173-179. (Immunogen)

Sallusto F, Lenig D, Forster R, Lipp M, Lanzavecchia A. Two subsets of memory T lymphocytes with distinct homing potentials and effector functions. *Nature*. 1999; 401(6754):708-712. (Clone-specific)

Yanagihara S, Komura E, Nagafune J, Watarai H, Yamaguchi Y. EBI1/CCR7 is a new member of dendritic cell chemokine receptor that is up-regulated upon maturation. *J Immunol*. 1998; 161(6):3096-3102. (Biology)

Yoshida R, Nagira M, Imai T, et al. EBI1-ligand chemokine (ELC) attracts a broad spectrum of lymphocytes: activated T cells strongly up-regulate CCR7 and efficiently migrate toward ELC. *Int Immunol*. 1998; 10(7):901-910. (Biology)