

Technical Data Sheet

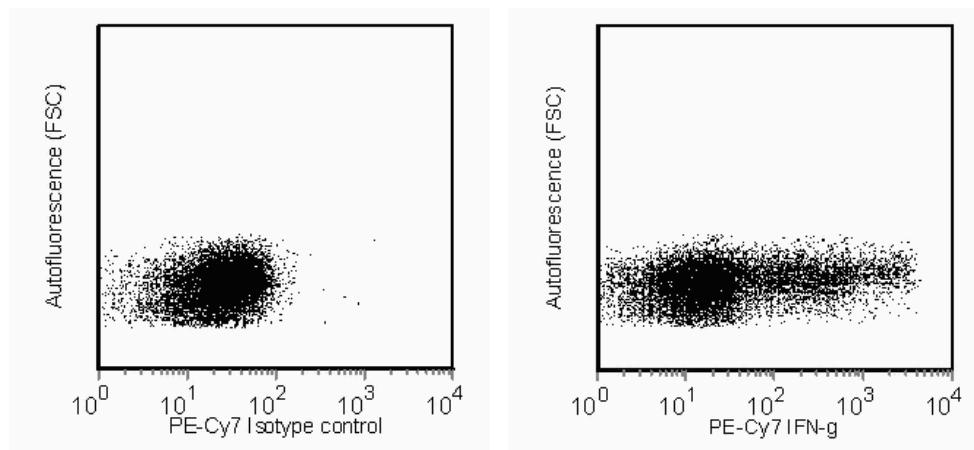
PE-Cy™7 Mouse Anti-Human IFN-γ

Product Information

Material Number:	560741
Size:	50 tests
Vol. per Test:	5 µl
Clone:	4S.B3
Immunogen:	Partially purified human IFN-γ from supernatants of human PBMC stimulated with <i>Staphylococcus aureus</i>
Isotype:	Mouse IgG1, κ
Reactivity:	Human
	QC Testing: Rhesus or Baboon or Cynomolgus
Storage Buffer:	Aqueous buffered solution containing BSA and ≤0.09% sodium azide.

Description

The 4S.B3 antibody reacts with human interferon-γ (IFN-γ). The immunogen used to generate this hybridoma was partially purified human IFN-γ obtained from supernatants of human PBMC stimulated with *Staphylococcus aureus*.



Flow cytometric analysis for IFN-γ in stimulated Rhesus macaque peripheral blood mononuclear cells (PBMC). PBMC from Rhesus macaque were stimulated for 6 hours with 50 ng/mL PMA (Sigma-Aldrich Cat. No. P-8139) and 500 ng/mL calcium ionophore A23187 (Sigma-Aldrich Cat. No. C-9275) in the presence of BD GolgiStop™ (Cat. No. 554724). Cells were then fixed and permeabilized using BD Cytotfix/Cytoperm™ (Cat. No. 554714) followed by staining with either a PE-Cy™7 Mouse IgG1, κ isotype control (left panel) or with the PE-Cy™7 Mouse Anti-Human IFN-γ antibody (right panel). Dot plots were derived from gated events based on light scattering characteristics for lymphocytes. Flow cytometry was performed on a BD™ LSR II flow cytometry system.

Preparation and Storage

Store undiluted at 4°C and protected from prolonged exposure to light. Do not freeze.

The monoclonal antibody was purified from tissue culture supernatant or ascites by affinity chromatography.

The antibody was conjugated with PE-Cy7 under optimum conditions, and unconjugated antibody and free PE-Cy7 were removed.

Application Notes

Application

Intracellular staining (flow cytometry)	Routinely Tested
---	------------------

Suggested Companion Products

Catalog Number	Name	Size	Clone
557646	PE-Cy™7 Mouse IgG1 κ Isotype Control	100 tests	MOPC-21
555899	Lysing Buffer	100 ml	(none)
554714	BD Cytotfix/Cytoperm™ Fixation/Permeablization Kit	250 tests	(none)
554724	Protein Transport Inhibitor (Containing Monensin)	0.7 ml	(none)

Product Notices

1. This reagent has been pre-diluted for use at the recommended Volume per Test. We typically use 1×10^6 cells in a 100-µl experimental sample (a test).
2. An isotype control should be used at the same concentration as the antibody of interest.
3. Warning: Some APC-Cy7 and PE-Cy7 conjugates show changes in their emission spectrum with prolonged exposure to formaldehyde. If you are unable to analyze fixed samples within four hours, we recommend that you use BD™ Stabilizing Fixative (Cat. No. 338036).

BD Biosciences

bdbiosciences.com

United States 877.232.8995 Canada 888.268.5430 Europe 32.53.720.550 Japan 0120.8555.90 Asia Pacific 65.6861.0633 Latin America/Caribbean 0800.771.7157

For country-specific contact information, visit bdbiosciences.com/how_to_order/

Conditions: The information disclosed herein is not to be construed as a recommendation to use the above product in violation of any patents. BD Biosciences will not be held responsible for patent infringement or other violations that may occur with the use of our products. Purchase does not include or carry any right to resell or transfer this product either as a stand-alone product or as a component of another product. Any use of this product other than the permitted use without the express written authorization of Becton Dickinson and Company is strictly prohibited.

For Research Use Only. Not for use in diagnostic or therapeutic procedures. Not for resale.

BD, BD Logo and all other trademarks are the property of Becton, Dickinson and Company. ©2011 BD



4. Please observe the following precautions: Absorption of visible light can significantly alter the energy transfer occurring in any tandem fluorochrome conjugate; therefore, we recommend that special precautions be taken (such as wrapping vials, tubes, or racks in aluminum foil) to prevent exposure of conjugated reagents, including cells stained with those reagents, to room illumination.
5. Cy is a trademark of Amersham Biosciences Limited. This conjugated product is sold under license to the following patents: US Patent Nos. 5,486,616; 5,569,587; 5,569,766; 5,627,027.
6. This product is subject to proprietary rights of Amersham Biosciences Corp. and Carnegie Mellon University and made and sold under license from Amersham Biosciences Corp. This product is licensed for sale only for research. It is not licensed for any other use. If you require a commercial license to use this product and do not have one return this material, unopened to BD Biosciences, 10975 Torreyana Rd, San Diego, CA 92121 and any money paid for the material will be refunded.
7. PE-Cy7 is a tandem fluorochrome composed of R-phycoerythrin (PE), which is excited by 488-nm light and serves as an energy donor, coupled to the cyanine dye Cy7, which acts as an energy acceptor and fluoresces maximally at 780 nm. PE-Cy7 tandem fluorochrome emission is collected in a detector for fluorescence wavelengths of 750 nm and higher. Although every effort is made to minimize the lot-to-lot variation in the efficiency of the fluorochrome energy transfer, differences in the residual emission from PE may be observed. Therefore, we recommend that individual compensation controls be performed for every PE-Cy7 conjugate. PE-Cy7 is optimized for use with a single argon ion laser emitting 488-nm light, and there is no significant overlap between PE-Cy7 and FITC emission spectra. When using dual-laser cytometers, which may directly excite both PE and Cy7, we recommend the use of cross-beam compensation during data acquisition or software compensation during data analysis.
8. Source of all serum proteins is from USDA inspected abattoirs located in the United States.
9. Caution: Sodium azide yields highly toxic hydrazoic acid under acidic conditions. Dilute azide compounds in running water before discarding to avoid accumulation of potentially explosive deposits in plumbing.
10. For fluorochrome spectra and suitable instrument settings, please refer to our Fluorochrome Web Page at www.bdbiosciences.com/colors.
11. Please refer to www.bdbiosciences.com/pharming/protocols for technical protocols.

References

- Farrar MA, Schreiber RD. The molecular cell biology of interferon-gamma and its receptor. *Annu Rev Immunol.* 1993; 11:571-611. (Biology)
- Favre C, Wijdenes J, Cabrillat H, Djossou O, Banchereau J, de Vries JE. Epitope mapping of recombinant human gamma interferon using monoclonal antibodies. *Mol Immunol.* 1989; 26(1):17-25. (Biology)
- Meager A. Characterization of interferons and immunoassays. In: Clemens MJ, Morris AG, Gearing AJH, ed. *Lymphocytes and Interferons. A Practical Approach.* Oxford: IRL Press Ltd; 1987:105-127. (Biology)
- Prussin C, Metcalfe DD. Detection of intracytoplasmic cytokine using flow cytometry and directly conjugated anti-cytokine antibodies. *J Immunol Methods.* 1995; 188(1):117-128. (Methodology: Flow cytometry)
- Sester U, Sester M, Hauk M, Kaul H, Köhler H, Girndt M. T-cell activation follows Th1 rather than Th2 pattern in haemodialysis patients.. *Nephrol Dial Transplant.* 2000; 15(8):1217-1223. (Biology)
- Vogel S, Friedman R, Hogan M. Measurement of antiviral activity induced by interferons a, b, and g.. In: Coligan JE, Kruisbeek AM, Margulies DH, Shevach EM, Strober W, ed. *Current Protocols in Immunology.* New York: John Wiley & Sons; 2007:6.9.1-6.9.15. (Biology)