

StemPro[®] EZPassage[™] Disposable Stem Cell Passaging Tool

Cat. No. 23181-010

Size: Box of 10 Disposable Passaging Tools
Store at room temperature

Description

The StemPro[®] EZPassage[™] Disposable Stem Cell Passaging Tool represents a novel human embryonic stem cell passaging device that makes manual passaging of stem cell colonies more rapid and reproducible. The Passaging Tool is made of a proprietary cell-culture safe inert material that facilitates cutting of the embryonic stem cell colonies growing on feeder cells or other substrate into uniform sized pieces for reproducible and optimal passaging. This tool outperforms existing manual and enzymatic passing methods in speed, uniformity of passaged colonies, and reliability.

Advantages of the StemPro[®] EZPassage[™] Disposable Stem Cell Passaging Tool

The StemPro[®] EZPassage[™] Disposable Stem Cell Passaging Tool provides the following advantages:

- Manually passage stem cell colonies in a fraction of the time compared with standard techniques.
- Stem cell colonies are cut in pieces of uniform size, making passaging of stem cells more reproducible.
- The StemPro[®] EZPassage[™] Disposable Stem Cell Passaging Tool is cell-culture safe, ready for-use and packaged individually in gamma-irradiated sleeves.

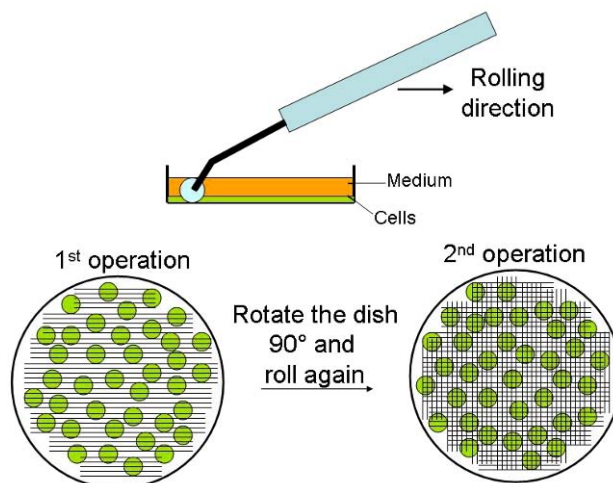
Important Guidelines for Isolating Cell Colonies

- All procedures should be performed aseptically under a laminar flow hood.
- The StemPro[®] EZPassage[™] Disposable Stem Cell Passaging Tool is intended for **one-time use**. Do not sterilize (alcohol or autoclave) the StemPro[®] EZPassage[™] Disposable Stem Cell Passaging Tool, since the tool may lose shape and cease to function properly.

Using the StemPro[®] EZPassage[™] Disposable Stem Cell Passaging Tool

Use this procedure to cut stem cell colonies using the StemPro[®] EZPassage[™] Disposable Stem Cell Passaging Tool.

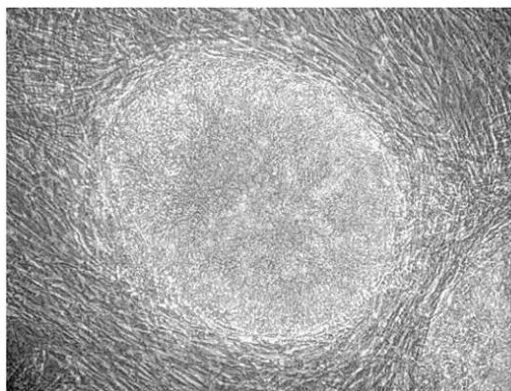
1. **Optional:** Dissect out the differentiated portions of human embryonic stem cell culture using poker or spike and remove them by changing the medium.
2. Pull open packaging and remove Passaging Tool under a laminar flow hood.
3. Hold the culture vessel in one hand and pull (roll) the StemPro[®] EZPassage[™] Disposable Stem Cell Passaging Tool across the entire plate in one direction (Left to right). Apply enough pressure so the entire roller blade touches the plate and maintain uniform pressure during the rolling action.
Note: Do not remove the culture medium before rolling the plate.
4. Keep pulling (rolling) the Passaging Tool parallel to the first pass till you have covered the entire plate, before moving to the next step (see diagram to the right – “First Operation”).
5. Rotate the culture vessel 90 degrees, then repeat step 2 and 3.
6. Using a serological pipette, rinse the plate using the medium on the plate so that the cut colonies are suspended in the medium.
7. Transfer the medium containing colonies to a 15 ml tube and spin down at 1000 rpm (200 g) for 2 min. Alternatively, you can leave the tube in a stand so that the colonies settle by gravity.
8. Aspirate the supernatant carefully to remove single cells or contaminating feeder cells (MEFs) from the population.
9. Re-suspend colonies in medium and transfer to the new matrix (typically at a 1:4 passaging rate).
10. Discard Stem Cell Passaging Tool after use. Do not re-use.



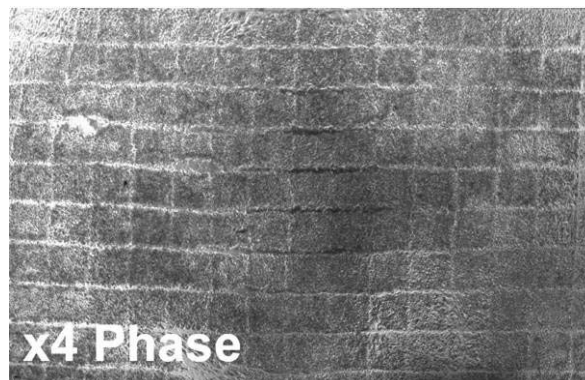
Expected Results

Below a typical example of a human embryonic stem cell culture plate before and after cutting the colony with the StemPro® EZPassage™ Disposable Stem Cell Passaging Tool is shown, as seen under 4 x magnification in phase microscopy.

Cell culture plate with colony before cutting.



Cell culture plate after cutting colony.



Certificate of Analysis

Product qualification is described in the Certificate of Analysis (CofA), available on our website by product lot number at www.invitrogen.com/cofa

Purchaser Notification

This product is covered by a Limited Use Label License (see our web-site www.invitrogen.com, or the Invitrogen catalog). By the use of this product you accept the terms and conditions of all applicable Limited Use Label Licenses.

Limited Use Label License No. 5: Invitrogen Technology: The purchase of this product conveys to the buyer the non-transferable right to use the purchased amount of the product and components of the product in research conducted by the buyer (whether the buyer is an academic or for-profit entity). The buyer cannot sell or otherwise transfer (a) this product (b) its components or (c) materials made using this product or its components to a third party or otherwise use this product or its components or materials made using this product or its components for Commercial Purposes. The buyer may transfer information or materials made through the use of this product to a scientific collaborator, provided that such transfer is not for any Commercial Purpose, and that such collaborator agrees in writing (a) not to transfer such materials to any third party, and (b) to use such transferred materials and/or information solely for research and not for Commercial Purposes. Commercial Purposes means any activity by a party for consideration and may include, but is not limited to: (1) use of the product or its components in manufacturing; (2) use of the product or its components to provide a service, information, or data; (3) use of the product or its components for therapeutic, diagnostic or prophylactic purposes; or (4) resale of the product or its components, whether or not such product or its components are resold for use in research. For products that are subject to multiple limited use label licenses, the most restrictive terms apply. Invitrogen Corporation will not assert a claim against the buyer of infringement of patents owned or controlled by Invitrogen Corporation which cover this product based upon the manufacture, use or sale of a therapeutic, clinical diagnostic, vaccine or prophylactic product developed in research by the buyer in which this product or its components was employed, provided that neither this product nor any of its components was used in the manufacture of such product. If the purchaser is not willing to accept the limitations of this limited use statement, Invitrogen is willing to accept return of the product with a full refund. For information on purchasing a license to this product for purposes other than research, contact Licensing Department, Invitrogen Corporation, 1600 Faraday Avenue, Carlsbad, California 92008. Phone (760) 603-7200. Fax (760) 602-6500. Email: outlicensing@invitrogen.com

©2007 Invitrogen Corporation. All rights reserved.

For research use only. Not intended for any animal or human therapeutic or diagnostic use.