

Technical Data Sheet

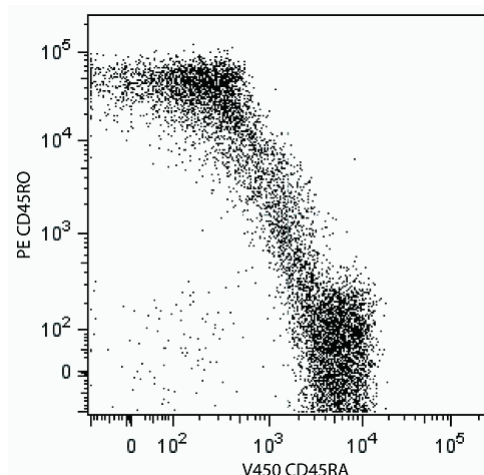
V450 Mouse Anti-Human CD45RA**Product Information**

Material Number:	560362
Size:	120 tests
Vol. per Test:	5 µl
Clone:	HI100
Isotype:	Mouse IgG2b, κ
Reactivity:	QC Testing: Human
Workshop:	IV N906
Storage Buffer:	Aqueous buffered solution containing protein stabilizer and ≤0.09% sodium azide.

Description

Reacts with the 220 kDa isoform of the human leukocyte common antigen found on approximately 40-50% of peripheral CD4+ T cells, 50% of peripheral CD8+ T cells and on a portion of B cells and monocytes. T cells expressing this antigen are naive or virgin T cells. CD45RA antibodies are useful for the study of the suppressor/inducer subpopulation of CD4+ lymphocytes.

The antibody is conjugated to BD Horizon™ V450, which has been developed for use in multicolor flow cytometry experiments and is available exclusively from BD Biosciences. It is excited by the Violet laser Ex max of 406 nm and has an Em Max at **450** nm. Conjugates with BD Horizon™ V450 can be used in place of Pacific Blue™ conjugates.



Analysis of CD45RA on human lymphocytes. Cells from lysed whole blood were stained simultaneously with BD Horizon™ V450 Mouse Anti-Human CD45RA, and PE Mouse Anti-Human CD45RO (clone UCHL1, Mat. No. 555493). The dot plots were derived from gated events based on light scattering characteristics of lymphocytes. Flow cytometry was performed on a BD LSR™ II flow cytometry system.

Preparation and Storage

The monoclonal antibody was purified from tissue culture supernatant or ascites by affinity chromatography.

The antibody was conjugated with BD Horizon™ V450 under optimum conditions, and unreacted BD Horizon™ V450 was removed.

Store undiluted at 4°C and protected from prolonged exposure to light. Do not freeze.

Application Notes**Application**

Flow cytometry	Routinely Tested
----------------	------------------

Suggested Companion Products

Catalog Number	Name	Size	Clone
555493	PE Mouse Anti-Human CD45RO	100 tests	UCHL1
560374	V450 Mouse IgG2b, κ Isotype Control	0.1 mg	27-35

BD Biosciences

bdbiosciences.com

United States	Canada	Europe	Japan	Asia Pacific	Latin America/Caribbean
877.232.8995	888.259.0187	32.53.720.550	0120.8555.90	65.6861.0633	55.11.5185.9995

For country-specific contact information, visit bdbiosciences.com/how_to_order/

Conditions: The information disclosed herein is not to be construed as a recommendation to use the above product in violation of any patents. BD Biosciences will not be held responsible for patent infringement or other violations that may occur with the use of our products. Purchase does not include or carry any right to resell or transfer this product either as a stand-alone product or as a component of another product. Any use of this product other than the permitted use without the express written authorization of Becton Dickinson and Company is strictly prohibited.

For Research Use Only. Not for use in diagnostic or therapeutic procedures. Not for resale.

BD, BD Logo and all other trademarks are the property of Becton, Dickinson and Company. ©2008 BD



Product Notices

1. This reagent has been pre-diluted for use at the recommended Volume per Test. We typically use 1×10^6 cells in a 100- μ l experimental sample (a test).
2. Since applications vary, each investigator should titrate the reagent to obtain optimal results.
3. Please refer to www.bdbiosciences.com/pharming/en/protocols for technical protocols.
4. For fluorochrome spectra and suitable instrument settings, please refer to our Fluorochrome Web Page at www.bdbiosciences.com/colors.
5. BD Horizon™ V450 has a maximum absorption of 406 nm and maximum emission of 450 nm. Before staining with this reagent, please confirm that your flow cytometer is capable of exciting the fluorochrome and discriminating the resulting fluorescence.
6. Pacific Blue™ is a trademark of Molecular Probes, Inc., Eugene, OR.
7. Caution: Sodium azide yields highly toxic hydrazoic acid under acidic conditions. Dilute azide compounds in running water before discarding to avoid accumulation of potentially explosive deposits in plumbing.

References

- Barclay NA, Brown MH, Birkeland ML, et al, ed. *The Leukocyte Antigen FactsBook*. San Diego, CA: Academic Press; 1997.(Biology)
- Knapp W, Dorken B, Rieber EP, et al, ed. *Leucocyte Typing IV*. New York: Oxford University Press; 1989.(Clone-specific)
- Johnson P, Maiti A. CD45: A family of leukocyte-specific cell surface glycoproteins. In: Herzenberg LA, Weir DM, Blackwell C, ed. *Weir's Handbook of Experimental Immunology, Vol 2*. Cambridge: Blackwell Science; 1997:62.1-62.16.(Biology)
- Picker LJ, Treer JR, Ferguson-Darnell B, Collins PA, Buck D, Terstappen LW. Control of lymphocyte recirculation in man. I. Differential regulation of the peripheral lymph node homing receptor L-selectin on T cells during the virgin to memory cell transition. *J Immunol*. 1993; 150(3):1105-1121.(Biology)
- Schwinger R. Cluster Report: CD45/CD45R. In: Knapp W, Dorken B, Rieber EP, et al, ed. *Leukocyte Typing IV: White Cell Differentiation Antigens*. New York: Oxford University Press; 1989:628-634.(Clone-specific)