

Technical Data Sheet

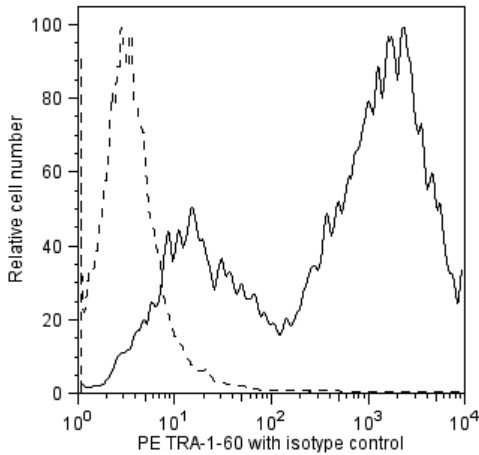
PE Mouse anti-Human TRA-1-60 Antigen

Product Information

Material Number:	560193
Alternate Name:	TRA-1-60(R)
Size:	100 Tests
Vol. per Test:	20 µl
Clone:	TRA-1-60
Immunogen:	Human Embryonal Carcinoma Cell Line
Isotype:	Mouse (BALB/c) IgM, κ
Reactivity:	QC Testing: Human Reported Reactivity: Rhesus
Storage Buffer:	Aqueous buffered solution containing BSA, protein stabilizer, and ≤0.09% sodium azide.

Description

The TRA-1-60 monoclonal antibody reacts with the neuraminidase-resistant form of a pluripotent-stem-cell-specific epitope on a high-molecular-weight transmembrane glycoprotein. The TRA-1-60 antigen is a sialylated epitope on the same keratan sulfate core molecule, podocalyxin, as 4 other distinct antigens on tumor-derived cell lines, TRA-1-81, GCTM2, K4, and K21. The expression of TRA-1-60 antigen is stage-specific and can be used to characterize embryonic cells and monitor their differentiation. The antigen is found on teratocarcinoma (embryonal carcinoma or EC), embryonic inner cell mass (but not morula or trophoblast), and embryonic stem (ES) cells. TRA-1-60 antigen is released into the serum of patients bearing testicular tumors containing EC cells. As human EC and ES cells undergo differentiation, expression of TRA-1-60 antigen is lost. Expression of TRA-1-60 antigen has also been observed on a rhesus monkey ES cell line (Thomson et al, 1995).



Flow cytometric analysis of PE Mouse Anti-Human TRA-1-60 on H9 cells. H9 human embryonic stem (ES) cells were harvested with Accutase™ and stained with either PE Mouse Anti-Human TRA-1-60 (solid line) or PE mouse IgM (G155-228) isotype control (Cat. No. 555584, dashed line), incubated in the dark for 20 minutes at room temperature and analyzed by flow cytometry. Flow cytometry was performed on a BD FACSCalibur™ System.

Preparation and Storage

Store undiluted at 4°C and protected from prolonged exposure to light. Do not freeze.
The monoclonal antibody was purified from tissue culture supernatant or ascites by affinity chromatography.
The antibody was conjugated with R-PE under optimum conditions, and unconjugated antibody and free PE were removed.

Application Notes

Application

Flow cytometry	Routinely Tested
----------------	------------------

Suggested Companion Products

Catalog Number	Name	Size	Clone
555584	PE Mouse IgM, κ Isotype Control	100 Tests	G155-228
560884	PE Mouse Anti-Human TRA-1-60 Antigen	25 Tests	TRA-1-60
554656	Stain Buffer (FBS)	500 mL	(none)
561527	Accutase™ Cell Detachment Solution	100 mL	(none)

BD Biosciences

bdbiosciences.com					
United States	Canada	Europe	Japan	Asia Pacific	Latin America/Caribbean
877.232.8995	866.979.9408	32.2.400.98.95	0120.8555.90	65.6861.0633	55.11.5185.9995
For country contact information, visit bdbiosciences.com/contact					

Conditions: The information disclosed herein is not to be construed as a recommendation to use the above product in violation of any patents. BD Biosciences will not be held responsible for patent infringement or other violations that may occur with the use of our products. Purchase does not include or carry any right to resell or transfer this product either as a stand-alone product or as a component of another product. Any use of this product other than the permitted use without the express written authorization of Becton, Dickinson and Company is strictly prohibited.
For Research Use Only. Not for use in diagnostic or therapeutic procedures. Not for resale.
Unless otherwise noted, BD, BD Logo and all other trademarks are property of Becton, Dickinson and Company. © 2015 BD



Product Notices

1. This reagent has been pre-diluted for use at the recommended Volume per Test. We typically use 1×10^6 cells in a 100- μ l experimental sample (a test).
2. An isotype control should be used at the same concentration as the antibody of interest.
3. Caution: Sodium azide yields highly toxic hydrazoic acid under acidic conditions. Dilute azide compounds in running water before discarding to avoid accumulation of potentially explosive deposits in plumbing.
4. Source of all serum proteins is from USDA inspected abattoirs located in the United States.
5. For fluorochrome spectra and suitable instrument settings, please refer to our Multicolor Flow Cytometry web page at www.bdbiosciences.com/colors.
6. Accutase is a registered trademark of Innovative Cell Technologies, Inc.
7. Please refer to www.bdbiosciences.com/pharming/protocols for technical protocols.

References

Andrews PW, Banting G, Damanov I, Arnaud D, Avner P. Three monoclonal antibodies defining distinct differentiation antigens associated with different high molecular weight polypeptides on the surface of human embryonal carcinoma cells. *Hybridoma*. 1984; 3(4):347-361. (Immunogen)

Badcock G, Pigott C, Goepel J, Andrews PW. The human embryonal carcinoma marker antigen TRA-1-60 is a sialylated keratan sulfate proteoglycan. *Cancer Res*. 1999; 59:4715-4719. (Clone-specific: Immunoprecipitation)

Draper JS, Pigott C, Thomson JA, Andrews PW. Surface antigens of human embryonic stem cells: changes upon differentiation in culture. *J Anat*. 2002; 200:249-258. (Clone-specific: Flow cytometry)

Henderson JK, Draper JS, Baillie HS, et al. Preimplantation human embryos and embryonic stem cells show comparable expression of stage-specific embryonic antigens. *Stem Cells*. 2002; 20:329-337. (Clone-specific: Flow cytometry, Immunofluorescence)

Schopperle WM, DeWolf WC. The TRA-1-60 and TRA-1-81 human pluripotent stem cell markers are expressed on podocalyxin in embryonal carcinoma. *Stem Cells*. 2007; 25:723-730. (Clone-specific)

Thomson JA, Itskovitz-Eldor J, Shapiro SS, et al. Embryonic stem cell lines derived from human blastocysts. *Science*. 1998; 282:1145-1147. (Clone-specific: Immunocytochemistry (cytospins))

Thomson JA, Kalishman J, Golos TG, et al. Isolation of a primate embryonic stem cell line. *Proc Natl Acad Sci U S A*. 1995; 92:7844-7848. (Clone-specific: Immunocytochemistry (cytospins))

BD Biosciences

bdbiosciences.com

United States	Canada	Europe	Japan	Asia Pacific	Latin America/Caribbean
877.232.8995	866.979.9408	32.2.400.98.95	0120.8555.90	65.6861.0633	55.11.5185.9995

For country contact information, visit bdbiosciences.com/contact

Conditions: The information disclosed herein is not to be construed as a recommendation to use the above product in violation of any patents. BD Biosciences will not be held responsible for patent infringement or other violations that may occur with the use of our products. Purchase does not include or carry any right to resell or transfer this product either as a stand-alone product or as a component of another product. Any use of this product other than the permitted use without the express written authorization of Becton, Dickinson and Company is strictly prohibited.

For Research Use Only. Not for use in diagnostic or therapeutic procedures. Not for resale.

Unless otherwise noted, BD, BD Logo and all other trademarks are property of Becton, Dickinson and Company. © 2015 BD

560193 Rev. 4

