

invitrogen™

by *life* technologies™

E-Gel® 1 Kb Plus DNA Ladder

Cat. no. 10488-090 Size 500 µL at 35 ng/µL Store at 15°C to 30°C

Doc. Part no. 100004458 Pub. no. MAN0000772 Rev. 3.0

Description

The E-Gel® 1 Kb Plus DNA Ladder is formulated for use with E-Gel® EX agarose gels. It is suitable for sizing linear double-stranded DNA fragments from 100 bp to 12 kb. The E-Gel® 1 Kb Plus DNA Ladder contains the unique tracking dyes, Xylene Cyanol FF (XCFF) and Tartrazine. These dyes allow you to visually track DNA migration during electrophoresis, and indicate when maximum resolution is achieved. The ladder contains a total of twenty bands: twelve bands ranging in size from 1000–12,000 bp in 1000-bp increments and eight bands ranging in size from 100–1650 bp. The 1650-bp band contains approximately 8% of the mass applied to the gel.

Storage Buffer

Proprietary

Tracking Dye

0.0075% XCFF

0.05% Tartrazine

For research use only. Not for use in diagnostic procedures.

Recommended Procedure

E-Gel® EX Agarose Gel

Use 175 ng of the E-Gel® 1 Kb Plus DNA Ladder for each lane of an E-Gel® EX agarose gel requiring a ladder. Prepare the E-Gel® 1 Kb Plus DNA Ladder as described below for loading on a single lane:

E-Gel® 1 Kb Plus DNA Ladder	5 µL
Deionized Water	to 20 µL

E-Gel® Agarose Gel

Use 350–700 ng of the E-Gel® 1 Kb Plus DNA Ladder for each lane of an E-Gel® agarose gel requiring a ladder. Prepare the E-Gel® 1 Kb Plus DNA Ladder as described below for loading on a single lane:

E-Gel® 1 Kb Plus DNA Ladder	10–20 µL
Deionized Water	to 20 µL

E-Gel® with SYBR® Safe stain

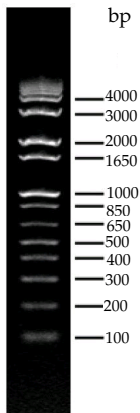
Use 700 ng of the E-Gel® 1 Kb Plus DNA Ladder for each lane of an E-Gel® agarose gel with SYBR® Safe stain requiring a ladder. Prepare the E-Gel® 1 Kb Plus DNA Ladder as described below for loading on a single lane:

E-Gel® 1 Kb Plus DNA Ladder	20 µL
-----------------------------	-------

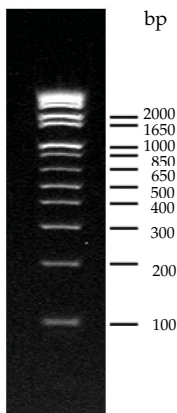
Notes

- *Do not heat* before loading.
- The 1650 bp band is generated from pUC. The bands smaller than 1000 bp are derived from lambda DNA.

E-Gel® 1 Kb Plus DNA Ladder on E-Gel® EX Agarose Gels



175 ng/lane
1% agarose gel



175 ng/lane
2% agarose gel

Notes

The E-Gel® 1 Kb Plus DNA Ladder was run on 1% and 2% E-Gel® EX agarose gels with the E-Gel® iBase™ Power System using the 'E-Gel® EX 1-2%' program setting for 8 minutes. Bands were visualized with the E-Gel® Safe Imager™ Kit.

Certificate of Analysis

The Certificate of Analysis provides detailed quality control and product qualification information for each product. Certificates of Analysis are available on our website. Go to **www.lifetechnologies.com/support** and search for the Certificate of Analysis by product lot number, which is printed on the box.

Limited Product Warranty

Life Technologies Corporation and/or its affiliate(s) warrant their products as set forth in the Life Technologies' General Terms and Conditions of Sale found on Life Technologies' website at

www.lifetechnologies.com/termsandconditions. If you have any questions, please contact Life Technologies at **www.lifetechnologies.com/support**.

©2013 Life Technologies Corporation. All rights reserved. The trademarks mentioned herein are the property of Life Technologies Corporation and/or its affiliate(s) or their respective owners.

DISCLAIMER - LIFE TECHNOLOGIES CORPORATION AND/OR ITS AFFILIATE(S) DISCLAIM ALL WARRANTIES WITH RESPECT TO THIS DOCUMENT, EXPRESSED OR IMPLIED, INCLUDING BUT NOT LIMITED TO THOSE OF MERCHANTABILITY, FITNESS FOR A PARTICULAR PURPOSE, OR NON-INFRINGEMENT. TO THE EXTENT ALLOWED BY LAW, IN NO EVENT SHALL LIFE TECHNOLOGIES AND/OR ITS AFFILIATE(S) BE LIABLE, WHETHER IN CONTRACT, TORT, WARRANTY, OR UNDER ANY STATUTE OR ON ANY OTHER BASIS FOR SPECIAL, INCIDENTAL, INDIRECT, PUNITIVE, MULTIPLE OR CONSEQUENTIAL DAMAGES IN CONNECTION WITH OR ARISING FROM THIS DOCUMENT, INCLUDING BUT NOT LIMITED TO THE USE THEREOF.

For support visit lifetechnologies.com/support or

email techsupport@lifetech.com

lifetechnologies.com

25 January 2013

