

Technical Data Sheet

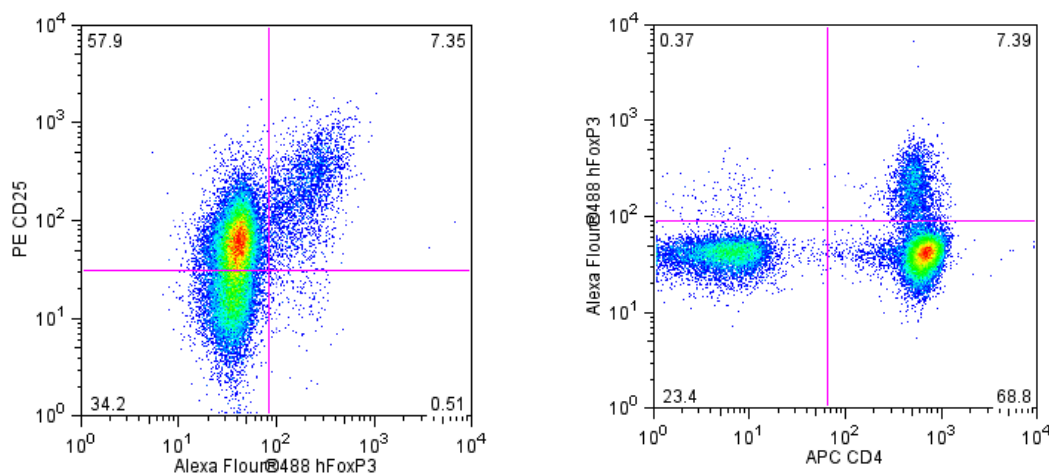
Alexa Fluor® 488 Mouse anti-Human FoxP3

Product Information

Material Number:	560047
Alternate Name:	Scurfin, IPEX, JM2
Size:	100 tests
Vol. per Test:	20 µl
Clone:	259D/C7
Immunogen:	FoxP3 recombinant protein
Isotype:	Mouse IgG1
Reactivity:	QC tested and Reported: Human Cross-reactivity: Cynomolgus, Rhesus, Baboon.
Storage Buffer:	Aqueous buffered solution containing BSA and ≤0.09% sodium azide.

Description

The 259D/C7 antibody reacts with the human FoxP3 transcription factor, a member of the forkhead or winged helix family of transcription factors. The expression of FoxP3, also known as Scurfin, IPEX and JM2, has been found to be associated with CD4+ regulatory T cells and represents a specific marker for these cells. Flow-cytometric analysis has shown that FoxP3 is expressed by the majority of CD4+CD25+high T cells in peripheral blood while less than half of CD4+CD25int cell population are FoxP3 positive. Approximately 5-10% of peripheral CD4+ cells are CD4+CD25+ T regulatory cells. T regulatory cells are thought to play a critical role in the control of T cell mediated autoimmunity by suppressing the proliferation and cytokine production of other T cells. To support this hypothesis, it has been found that FOXP3 is mutated in scurfy (sf) mice. The 259D/C7 antibody reacts with all currently identified isoforms of human FoxP3 and is cross-reactive with Cynomolgus, Rhesus and Baboon.



Flow cytometric analysis of Alexa 488 anti-human FoxP3 on resting PBMC. Human PBMC were stained with APC anti-human CD4 (clone RPA-T4, Cat. No. 555349) and PE anti-human CD25 (Clone M-A251, Cat. No. 555432) simultaneously. Cells were fixed and permeabilized (see recommended assay procedure) followed by intracellular staining with Alexa 488 anti-Human FoxP3 (clone 259D/C7; Cat No. 560047). The dot plots were derived from the gated events based on light scattering characteristics of lymphocytes and fluorescence characteristics of CD4+ or CD25+ respectively, shown as either FoxP3 vs CD25 (left panel) or FoxP3 vs CD4 (right panel). Flow cytometry was performed on a BD FACSCalibur™ System.

Preparation and Storage

The antibody was conjugated to Alexa Fluor® 488 under optimum conditions, and unreacted Alexa Fluor® 488 was removed. Store undiluted at 4°C and protected from prolonged exposure to light. Do not freeze.
The monoclonal antibody was purified from tissue culture supernatant or ascites by affinity chromatography.

Application Notes

Application

Intracellular staining (flow cytometry)	Routinely Tested
---	------------------

BD Biosciences

bdbiosciences.com

United States	Canada	Europe	Japan	Asia Pacific	Latin America/Caribbean
877.232.8995	888.259.0187	32.53.720.550	0120.8555.90	65.6861.0633	55.11.5185.9995

For country-specific contact information, visit bdbiosciences.com/how_to_order/

Conditions: The information disclosed herein is not to be construed as a recommendation to use the above product in violation of any patents. BD Biosciences will not be held responsible for patent infringement or other violations that may occur with the use of our products. Purchase does not include or carry any right to resell or transfer this product either as a stand-alone product or as a component of another product. Any use of this product other than the permitted use without the express written authorization of Becton Dickinson and Company is strictly prohibited.

For Research Use Only. Not for use in diagnostic or therapeutic procedures. Not for resale.

BD, BD Logo and all other trademarks are the property of Becton, Dickinson and Company. ©2008 BD



Recommended Assay Procedure:

Cell Preparation and Staining Procedures for Conjugated Anti-Human FoxP3 Antibody

1. Bring the buffers to RT before use. Prepare working solutions of the BD Pharmingen Human FoxP3 Buffer Set Cat. No. 560098 (For the buffer preparation, please see TDS Cat. No. 560098 buffer instructions for details).
2. Prepare human PBMC. Dilute the cells with BD Pharmingen Stain Buffer (FBS)* to ten million cells/ml.
3. Pipette appropriate amount of surface staining reagent to bottom of each 12 x 75 mm tube.
4. Add 100µl of cells per tube, vortex, incubate for 20 minutes at RT protected from light.
5. Add 2 ml of wash buffer. Centrifuge 250 x g for 10 minutes, and remove wash buffer.
6. To fix the cells, gently re-suspend pellet in residual volume of wash buffer and then add 2ml of 1x Human FoxP3 Buffer A. Vortex. Incubate for 10 minutes at RT in the dark.
7. Centrifuge 500 x g for 5 minutes, and remove fixative. Caution: Be aware the pellet is buoyant.
8. To wash cells, re-suspend each pellet in 2ml of BD Pharmingen Stain Buffer (FBS)*, and centrifuge 500 x g for 5 minutes. Remove wash buffer.
9. To permeabilize the cells, gently re-suspend pellet in residual volume of wash buffer and then add 0.5 ml of 1x working solution Human FoxP3 Buffer C to each tube. Vortex. Incubate for 30 minutes at RT protected from light.
10. To wash cells, add 2 ml of BD Pharmingen Stain Buffer (FBS)* to each tube, centrifuge 500 x g for 5 minutes at RT. Remove buffer and repeat wash step. Remove buffer.
11. Add conjugated FoxP3 antibody at appropriate concentrations to re-suspend the pellet. Gently shake or vortex.
12. Incubate for 30 minutes in the dark at RT.
13. Repeat wash step #10.
14. Resuspend in wash buffer and analyze immediately.

Optional Add 300µl of 1% formaldehyde in 1x PBS and store at 4°C. Analyze cells within 24 hours.

* We recommend using the BD Pharmingen Stain Buffer (FBS; Cat No. 554656) for all wash steps and covering tubes during incubation steps with caps or parafilm. We also recommend optimizing forward scatter and side scatter voltages to visualize lymphocytes as separate from debris, red cell ghosts and/or platelets before acquisition.

** Acquire at least 15,000 to 25,000 CD4 positive lymphocytes.

Suggested Companion Products

Catalog Number	Name	Size	Clone
557702	Alexa Fluor® 488 Mouse IgG1 κ Isotype Control	100 tests	MOPC-21
554656	Stain Buffer (FBS)	500 ml	(none)
560098	Human FoxP3 Buffer Set	100 tests	(none)
555349	APC Mouse Anti-Human CD4	100 tests	RPA-T4
555432	PE Mouse Anti-Human CD25	100 tests	M-A251

Product Notices

1. This reagent has been pre-diluted for use at the recommended Volume per Test. We typically use 1×10^6 cells in a 100-µl experimental sample (a test).
2. Please refer to www.bdbiosciences.com/pharmingen/protocols for technical protocols.
3. For fluorochrome spectra and suitable instrument settings, please refer to our Fluorochrome Web Page at www.bdbiosciences.com/colors.
4. The Alexa Fluor®, Pacific Blue™, and Cascade Blue® dye antibody conjugates in this product are sold under license from Molecular Probes, Inc. for research use only, excluding use in combination with microarrays, or as analyte specific reagents. The Alexa Fluor® dyes (except for Alexa Fluor® 430), Pacific Blue™ dye, and Cascade Blue® dye are covered by pending and issued patents.
5. Alexa Fluor® 488 fluorochrome emission is collected at the same instrument settings as for fluorescein isothiocyanate (FITC).
6. Caution: Sodium azide yields highly toxic hydrazoic acid under acidic conditions. Dilute azide compounds in running water before discarding to avoid accumulation of potentially explosive deposits in plumbing.
7. Source of all serum proteins is from USDA inspected abattoirs located in the United States.
8. Alexa Fluor is a registered trademark of Molecular Probes, Inc., Eugene, OR.

References

Brunkow ME, Jeffery EW, Hjerrild KA, et al. Disruption of a new forkhead/winged-helix protein, scurf, results in the fatal lymphoproliferative disorder of the scurfy mouse. *Nat Genet.* 2001; 27(1):68-73. (Biology)

Giovanna Roncador et al. Analysis of Foxp3 protein expression in human CD4+CD25+ regulatory T cells at a single cell level. *Eur J Immunol.* 2005; 35. (Immunogen)

Wildin RS, Ramsdell F, Peake J, et al. X-linked neonatal diabetes mellitus, enteropathy and endocrinopathy syndrome is the human equivalent of mouse scurfy. *Nat Genet.* 2001; 27(1):18-20. (Biology)