

Technical Data Sheet

Biotin Rat Anti-Human Cutaneous Lymphocyte Antigen

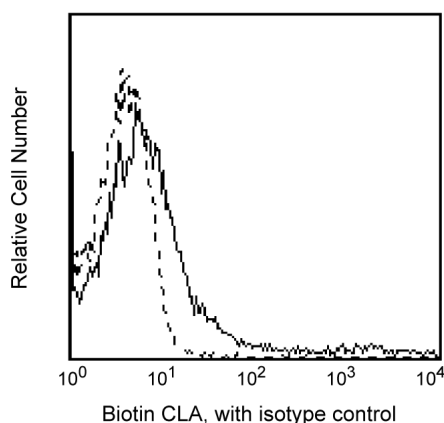
Product Information

Material Number:	559950
Alternate Name:	CLA
Size:	100 tests
Vol. per Test:	20 µl
Clone:	HECA-452
Isotype:	Rat IgM, κ
Reactivity:	QC Testing: Human Reported: Mouse
Workshop:	V S075
Storage Buffer:	Aqueous buffered solution containing BSA and ≤0.09% sodium azide.

Description

Reacts with cutaneous lymphocyte associated antigen (CLA), a carbohydrate domain shared by sialyl Lewis[x] (sLe^x) and sialyl Lewis[a] (sLe^a) antigens. It serves as the ligand for selectins including CD62E (ELAM-1) and CD62L (LECAM-1). CLA is expressed on lymphocytes in the skin on high endothelium. In peripheral blood, it is expressed on a small subset of lymphocytes and all monocytes and granulocytes. It has been suggested that CLA plays a role in supporting lymphocyte migration to extravascular tissue during inflammation.

This antibody is routinely tested by flow cytometric analysis. Other applications were tested at BD Biosciences Pharmingen during antibody development only or reported in the literature.



Profile of peripheral blood lymphocytes analyzed by flow cytometry

Preparation and Storage

The monoclonal antibody was purified from tissue culture supernatant or ascites by affinity chromatography.

The antibody was conjugated with biotin under optimum conditions, and unreacted biotin was removed.

Store undiluted at 4°C and protected from prolonged exposure to light. Do not freeze.

Application Notes

Application

Flow cytometry	Routinely Tested
Immunohistochemistry-formalin (antigen retrieval required)	Tested During Development
Immunohistochemistry-frozen	Tested During Development

Suggested Companion Products

Catalog Number	Name	Size	Clone
559941	Biotin Rat IgM, κ Isotype Control	100 tests	R4-22
554061	PE Streptavidin	0.5 mg	(none)

BD Biosciences

bdbiosciences.com

United States	Canada	Europe	Japan	Asia Pacific	Latin America/Caribbean
877.232.8995	888.259.0187	32.53.720.550	0120.8555.90	65.6861.0633	55.11.5185.9995

For country-specific contact information, visit bdbiosciences.com/how_to_order/

Conditions: The information disclosed herein is not to be construed as a recommendation to use the above product in violation of any patents. BD Biosciences will not be held responsible for patent infringement or other violations that may occur with the use of our products. Purchase does not include or carry any right to resell or transfer this product either as a stand-alone product or as a component of another product. Any use of this product other than the permitted use without the express written authorization of Becton Dickinson and Company is strictly prohibited.

For Research Use Only. Not for use in diagnostic or therapeutic procedures. Not for resale.

BD, BD Logo and all other trademarks are the property of Becton, Dickinson and Company. ©2008 BD



Product Notices

1. This reagent has been pre-diluted for use at the recommended Volume per Test. We typically use 1×10^6 cells in a 100- μ l experimental sample (a test).
2. Since applications vary, each investigator should titrate the reagent to obtain optimal results.
3. Please refer to www.bdbiosciences.com/pharmlingen/protocols for technical protocols.
4. Caution: Sodium azide yields highly toxic hydrazoic acid under acidic conditions. Dilute azide compounds in running water before discarding to avoid accumulation of potentially explosive deposits in plumbing.
5. Source of all serum proteins is from USDA inspected abattoirs located in the United States.

References

Borges E, Pendl G, Eytner R, Steegmaier M, Zollner O, Vestweber D. The binding of T cell-expressed P-selectin glycoprotein ligand-1 to E- and P-selectin is differentially regulated. *J Biol Chem*. 1997; 272(45):28786-28792. (Clone-specific: Flow cytometry, Immunoprecipitation, Western blot)

Duijvestijn AM, Horst E, Pals ST, et al. High endothelial differentiation in human lymphoid and inflammatory tissues defined by monoclonal antibody HECA-452. *Am J Pathol*. 1988; 130(1):147-155. (Biology)

Guesdon JL, Ternynck T, Avrameas S. The use of avidin-biotin interaction in immunoenzymatic techniques. *J Histochem Cytochem*. 1979; 27(8):1131-1139. (Biology)

Pickar LJ, Kishimoto TK, Smith CW, Warnock RA, Butcher EC. ELAM-1 is an adhesion molecule for skin-homing T cells. *Nature*. 1991; 349(6312):796-799. (Biology)

Pickar LJ, Warnock RA, Burns AR, Doerschuk CM, Berg EL, Butcher EC. The neutrophil selectin LECAM-1 presents carbohydrate ligands to the vascular selectins ELAM-1 and GMP-140. *Cell*. 1991; 66(5):921-933. (Biology)

Schlossman SF, Boumsell L, Gilks W, et al, ed. *Leukocyte Typing V: White Cell Differentiation Antigens*. New York: Oxford University Press; 1995. (Clone-specific)