

## Technical Data Sheet

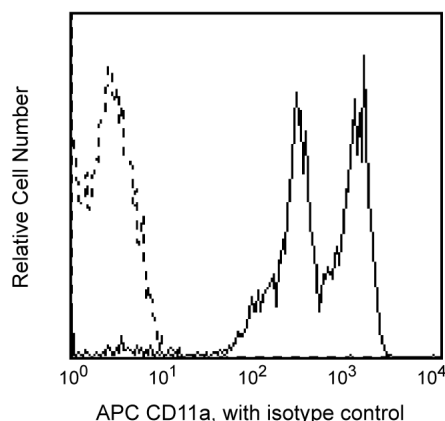
## APC Mouse Anti-Human CD11A

## Product Information

<b>Material Number:</b>	559875
<b>Alternate Name:</b>	LFA-1 $\alpha$ ; Lymphocyte (Leukocyte) function-associated antigen 1 $\alpha$ chain; ITGAL
<b>Size:</b>	100 tests
<b>Vol. per Test:</b>	20 $\mu$ l
<b>Clone:</b>	HI111
<b>Isotype:</b>	Mouse IgG1, $\kappa$
<b>Reactivity:</b>	QC Testing: Human Tested in Development: Dog, Rabbit
<b>Workshop:</b>	IV N231
<b>Storage Buffer:</b>	Aqueous buffered solution containing BSA and $\leq 0.09\%$ sodium azide.

## Description

The HI111 monoclonal antibody specifically binds to the 180 kDa integrin  $\alpha$  chain. This type I transmembrane glycoprotein associates with CD18 (integrin  $\beta 2$ ) to form the heterodimeric glycoprotein CD11a/CD18. This heterodimer is also known as the lymphocyte (leukocytes) function associated antigen-1 (LFA-1) that is expressed on all leukocytes. LFA-1 is an adhesion molecule involved in lymphocyte and granulocyte functions. LFA-1 mediates adhesion of lymphoid cells to the vascular endothelium in association with its ligand, and the intracellular adhesion molecule-1 (ICAM-1), CD54. Other ligands are ICAM-2 (CD102) and ICAM-3 (CD50).



Profile of peripheral blood lymphocytes analyzed on a FACSscan (BDIS, San Jose, CA)

## Preparation and Storage

The monoclonal antibody was purified from tissue culture supernatant or ascites by affinity chromatography.

The antibody was conjugated to APC under optimum conditions, and unconjugated antibody and free APC were removed.

Store undiluted at 4°C and protected from prolonged exposure to light. Do not freeze.

## Application Notes

## Application

Flow cytometry	Routinely Tested
----------------	------------------

## Suggested Companion Products

Catalog Number	Name	Size	Clone
555751	APC Mouse IgG1, $\kappa$ Isotype Control	100 tests	MOPC-21

## Product Notices

1. This reagent has been pre-diluted for use at the recommended Volume per Test. We typically use  $1 \times 10^6$  cells in a 100- $\mu$ l experimental sample (a test).
2. Since applications vary, each investigator should titrate the reagent to obtain optimal results.
3. Please refer to [www.bdbiosciences.com/pharmingen/protocols](http://www.bdbiosciences.com/pharmingen/protocols) for technical protocols.
4. For fluorochrome spectra and suitable instrument settings, please refer to our Fluorochrome Web Page at [www.bdbiosciences.com/colors](http://www.bdbiosciences.com/colors).

## BD Biosciences

[bdbiosciences.com](http://bdbiosciences.com)

United States	Canada	Europe	Japan	Asia Pacific	Latin America/Caribbean
877.232.8995	888.268.5430	32.53.720.550	0120.8555.90	65.6861.0633	0800.771.7157

For country-specific contact information, visit [bdbiosciences.com/how\\_to\\_order/](http://bdbiosciences.com/how_to_order/)

Conditions: The information disclosed herein is not to be construed as a recommendation to use the above product in violation of any patents. BD Biosciences will not be held responsible for patent infringement or other violations that may occur with the use of our products. Purchase does not include or carry any right to resell or transfer this product either as a stand-alone product or as a component of another product. Any use of this product other than the permitted use without the express written authorization of Becton Dickinson and Company is strictly prohibited.

For Research Use Only. Not for use in diagnostic or therapeutic procedures. Not for resale.

BD, BD Logo and all other trademarks are the property of Becton, Dickinson and Company. ©2011 BD



5. Caution: Sodium azide yields highly toxic hydrazoic acid under acidic conditions. Dilute azide compounds in running water before discarding to avoid accumulation of potentially explosive deposits in plumbing.
6. Source of all serum proteins is from USDA inspected abattoirs located in the United States.

## References

Dustin ML, Springer TA. Lymphocyte function-associated antigen-1 (LFA-1) interaction with intercellular adhesion molecule-1 (ICAM-1) is one of at least three mechanisms for lymphocyte adhesion to cultured endothelial cells. *J Cell Biol.* 1988; 107(1):321-331. (Biology)

Knapp W, Dorken B, Rieber EP, et al, ed. *Leucocyte Typing IV*. New York: Oxford University Press; 1989:1-1208. (Clone-specific)

Rothlein R, Dustin ML, Marlin SD, Springer TA. A human intercellular adhesion molecule (ICAM-1) distinct from LFA-1. *J Immunol.* 1986; 137(4):1270-1274. (Biology)