

Technical Data Sheet

FITC Rat Anti-Human IL-2

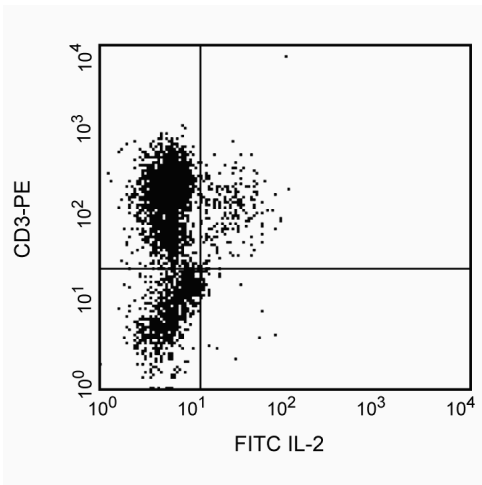
Product Information

Material Number:	559361
Size:	50 tests
Vol. per Test:	20 µl
Clone:	MQ1-17H12
Immunogen:	Recombinant Human IL-2
Isotype:	Rat IgG2a, κ
Reactivity:	Human
	QC Testing: Baboon or Cynomolgus or Rhesus
Storage Buffer:	Aqueous buffered solution containing BSA and ≤0.09% sodium azide.

Description

Clone MQ1-17H12 reacts with the human form of interleukin-2 (IL-2) detectable in the cytoplasm of a major subset of activated peripheral blood T lymphocytes, following treatment with monensin or brefeldin A. Clone MQ1-17H12 also cross-reacts with a cytoplasmic component of peripheral blood CD3+ lymphocytes of baboon, and both rhesus and cynomolgus macaque monkeys following six-hour treatment with phorbol myristic acetate (PMA) and Ca++ ionophore (A23187) in the presence of monensin. While the frequency of CD3+ non-human primate cells reacting with MQ1-17H12 following PMA + Ca++ ionophore activation is similar to that observed with normal human donor CD3+ lymphocytes, the fluorescence intensity is characteristically weaker.

This antibody is routinely tested by flow cytometric analysis. Other applications were tested at BD Biosciences Pharmingen during antibody development only or reported in the literature.



Profile of anti-IL-2 intracellular reactivity on PMA + Ca++ ionophore-stimulated peripheral blood mononuclear cells of Rhesus macaque (macaca mulatta) analyzed by flow cytometry

Preparation and Storage

The monoclonal antibody was purified from tissue culture supernatant or ascites by affinity chromatography. The antibody was conjugated with FITC under optimum conditions, and unreacted FITC was removed. Store undiluted at 4° C and protected from prolonged exposure to light. Do not freeze.

Application Notes

Application

Intracellular staining (flow cytometry)	Routinely Tested
---	------------------

BD Biosciences

United States	Canada	Europe	Japan	Asia Pacific	Latin America/Caribbean
877.232.8995	888.259.0187	32.53.720.550	0120.8555.90	65.6861.0633	55.11.5185.9995
For country-specific contact information, visit bdbiosciences.com/how_to_order/					

Conditions: The information disclosed herein is not to be construed as a recommendation to use the above product in violation of any patents. BD Biosciences will not be held responsible for patent infringement or other violations that may occur with the use of our products. Purchase does not include or carry any right to resell or transfer this product either as a stand-alone product or as a component of another product. Any use of this product other than the permitted use without the express written authorization of Becton Dickinson and Company is strictly prohibited.

For Research Use Only. Not for use in diagnostic or therapeutic procedures. Not for resale.

BD, BD Logo and all other trademarks are the property of Becton, Dickinson and Company. ©2006 BD



Suggested Companion Products

Catalog Number	Name	Size	Clone
554688	FITC Rat IgG2a, κ Isotype Control	0.1 mg	R35-95

Product Notices

1. This reagent has been pre-diluted for use at the recommended Volume per Test. We typically use 1 X 10⁶ cells in a 100- μ l experimental sample (a test).
2. Since applications vary, each investigator should titrate the reagent to obtain optimal results.
3. Please refer to www.bdbiosciences.com/pharming/en/protocols for technical protocols.
4. Caution: Sodium azide yields highly toxic hydrazoic acid under acidic conditions. Dilute azide compounds in running water before discarding to avoid accumulation of potentially explosive deposits in plumbing.
5. Source of all serum proteins is from USDA inspected abattoirs located in the United States.

References

Meager A. Characterization of interferons and immunoassays. In: Clemens MJ, Morris AG, Gearing AJH, ed. *Lymphocytes and Interferons. A Practical Approach*. Oxford: IRL Press Ltd; 1987:105-127.(Biology)

Prussin C, Metcalfe DD. Detection of intracytoplasmic cytokine using flow cytometry and directly conjugated anti-cytokine antibodies. *J Immunol Methods*. 1995; 188(1):117-128.(Methodology)

Sopper S, Stahl-Hennig C, Demuth M, Johnston IC, Dorries R, ter Meulen V. Lymphocyte subsets and expression of differentiation markers in blood and lymphoid organs of rhesus monkeys. *Cytometry*. 1997; 29(4):351-362.(Biology)

Verdier F, Aujoulat M, Condevaux F, Descotes J. Determination of lymphocyte subsets and cytokine levels in cynomolgus monkeys. *Toxicology*. 1995; 105(1):81-90.(Biology)