

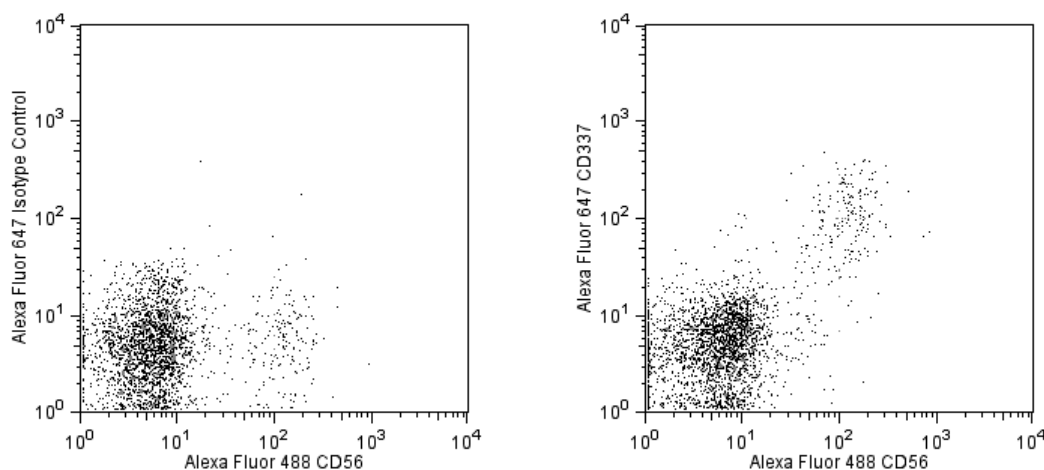
Technical Data Sheet

Alexa Fluor® 647 Mouse anti-Human CD337 (NKp30)**Product Information**

Material Number:	558408
Size:	0.1 mg
Concentration:	0.2 mg/ml
Clone:	p30-15
Immunogen:	Human NKp30 extracellular domain
Isotype:	Mouse IgG1, κ
Reactivity:	Human
Storage Buffer:	Aqueous buffered solution containing protein stabilizer and $\leq 0.09\%$ sodium azide.

Description

The monoclonal antibody clone p30-15 reacts with CD337, also known as NKp30, a receptor found on the surface of natural killer (NK) cells. NK cells are large lymphoid cells discovered because of their ability to recognize and kill abnormal cells such as tumor and virally infected cells. NK cell immune responses are regulated by a balance of activating and inhibitory signals generated by cell surface receptors. Inhibitory receptors recognize MHC class I molecules on normal cells producing a negative signal to the NK cell. Loss of MHC class I expression in infected or transformed cells results in the loss of this negative signal leading to NK cell activation. In concert with the loss of inhibitory signals, activation signals via NK receptors such as NKp30, NKp44, NKp46, NKG2D, and NKp80 mediate the activation of NK cells. NKp30 cooperates with NKp46 and/or NKp44 in the induction of NK cell-mediated cytotoxicity against the majority of target cells.



Expression of CD337 (NKp30) in human NK cells. Human blood cells were stained with either Alexa 647 anti-CD337 (right panel) or Alexa 647 mouse IgG1 isotype control (left panel, Cat. No. 557714) and Alexa Fluor 488 Mouse anti-Human CD56 (Cat. No. 557699). Erythrocytes were lysed using BD PharmLyse™ lysis buffer (Cat. No. 555899). Viable lymphocytes were selected by scatter profile. Flow cytometry was performed on a BD FACSCalibur™ flow cytometry system.

Preparation and Storage

The antibody was conjugated to Alexa Fluor® 647 under optimum conditions, and unreacted Alexa Fluor® 647 was removed. Store undiluted at 4°C and protected from prolonged exposure to light. Do not freeze.

Application Notes**Application**

Flow cytometry	Tested
----------------	--------

Product Notices

- Please refer to www.bdbiosciences.com/pharmingen/protocols for technical protocols.
- The Alexa Fluor®, Pacific Blue™, and Cascade Blue® dye antibody conjugates in this product are sold under license from Molecular Probes, Inc. for research use only, excluding use in combination with microarrays, or as analyte specific reagents. The Alexa Fluor® dyes (except for Alexa Fluor® 430), Pacific Blue™ dye, and Cascade Blue® dye are covered by pending and issued patents.
- Alexa Fluor® 647 fluorochrome emission is collected at the same instrument settings as for allophycocyanin (APC).

BD Biosciences

bdbiosciences.com

United States	Canada	Europe	Japan	Asia Pacific	Latin America/Caribbean
877.232.8995	888.259.0187	32.53.720.550	0120.8555.90	65.6861.0633	55.11.5185.9995

For country-specific contact information, visit bdbiosciences.com/how_to_order/

Conditions: The information disclosed herein is not to be construed as a recommendation to use the above product in violation of any patents. BD Biosciences will not be held responsible for patent infringement or other violations that may occur with the use of our products. Purchase does not include or carry any right to resell or transfer this product either as a stand-alone product or as a component of another product. Any use of this product other than the permitted use without the express written authorization of Becton Dickinson and Company is strictly prohibited.

For Research Use Only. Not for use in diagnostic or therapeutic procedures. Not for resale.

BD, BD Logo and all other trademarks are the property of Becton, Dickinson and Company. ©2008 BD



4. Caution: Sodium azide yields highly toxic hydrazoic acid under acidic conditions. Dilute azide compounds in running water before discarding to avoid accumulation of potentially explosive deposits in plumbing.
5. For fluorochrome spectra and suitable instrument settings, please refer to our Fluorochrome Web Page at www.bdbiosciences.com/colors.
6. Alexa Fluor® is a registered trademark of Molecular Probes, Inc., Eugene, OR.

References

Augugliaro R, Parolini S, Castriconi , et al. Selective cross-talk among natural cytotoxicity receptors in human natural killer cells. *Eur J Immunol*. 2003; 33(5):1235-1241. (Biology)

Flaig RM, Stark S, Watzl C. Cutting edge: NTB-A activates NK cells via homophilic interaction. *J Immunol*. 2004; 172(11):6524-6527. (Biology)

Pende D, Parolini S, Pessino A, et al. Identification and molecular characterization of NKp30, a novel triggering receptor involved in natural cytotoxicity mediated by human natural killer cells. *J Exp Med*. 1999; 190(10):1505-1516. (Biology)

Stark S, Flaig RM, Sandusky M, Watzl C. The use of trimeric isoleucine-zipper fusion proteins to study surface-receptor-ligand interactions in natural killer cells. *J Immunol Methods*. 2004; 296(1-2):149-158. (Biology)