

Technical Data Sheet

Alexa Fluor® 488 Mouse anti-Human Granulysin

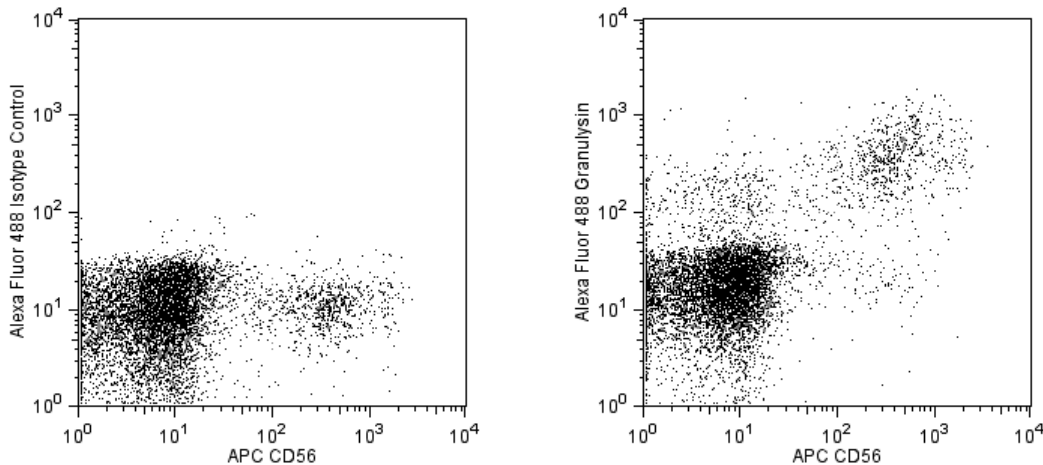
Product Information

Material Number:	558254
Size:	100 tests
Vol. per Test:	20 µl
Clone:	RB1
Isotype:	Mouse IgG1, κ
Reactivity:	QC Testing: Human
Storage Buffer:	Aqueous buffered solution containing BSA and ≤0.09% sodium azide.

Description

The monoclonal antibody RB1 recognizes both 15- and 9kD forms of human granulysin, a protein present in granules of human natural killer (NK) cells and activated cytotoxic T lymphocytes (CTLs). It is cytolytic against both tumor and microbial targets and has been found to kill extracellular and intracellular mycobacterium tuberculosis through a granule-dependent mechanism. Granulysin is a member of a larger family of proteins known as saposin-like proteins (SAPLIP) that are thought to associate with lipids. The crystal structure of granulysin suggests that it functions as a lytic molecule. To date, no granulysin homolog has been found in mice, precluding the generation of granulysin knockout animals.

This product is sold under license from BML, Inc.



Flow cytometric analysis of anti-human granulysin on human peripheral blood mononuclear cells (PBMC). Isolated human PBMC were stained with APC anti-human CD56 (clone B159, Cat. No. 555518). Cells were then fixed and permeabilized with BD Cytofix/Cytoperm™ (Cat. No. 554722) followed by staining with either Alexa 488 anti-granulysin (clone RB1, Cat. No. 558254, right panel) or a Alexa 488 conjugated isotype control (clone MOPC-21; Cat. No. 557702, left panel). Flow cytometry was performed on a BD FACSCalibur™ System.

Preparation and Storage

The monoclonal antibody was purified from tissue culture supernatant or ascites by affinity chromatography. The antibody was conjugated to Alexa Fluor® 488 under optimum conditions, and unreacted Alexa Fluor® 488 was removed. Store undiluted at 4°C and protected from prolonged exposure to light. Do not freeze.

Application Notes

Application

Intracellular staining (flow cytometry)	Routinely Tested
---	------------------

Suggested Companion Products

Catalog Number	Name	Size	Clone
557702	Alexa Fluor® 488 Mouse IgG1 κ Isotype Control	100 tests	MOPC-21
554722	Fixation and Permeabilization Solution	125 ml	(none)

BD Biosciences

bdbiosciences.com

United States	Canada	Europe	Japan	Asia Pacific	Latin America/Caribbean
877.232.8995	888.259.0187	32.53.720.550	0120.8555.90	65.6861.0633	55.11.5185.9995

For country-specific contact information, visit bdbiosciences.com/how_to_order/

Conditions: The information disclosed herein is not to be construed as a recommendation to use the above product in violation of any patents. BD Biosciences will not be held responsible for patent infringement or other violations that may occur with the use of our products. Purchase does not include or carry any right to resell or transfer this product either as a stand-alone product or as a component of another product. Any use of this product other than the permitted use without the express written authorization of Becton Dickinson and Company is strictly prohibited.

For Research Use Only. Not for use in diagnostic or therapeutic procedures. Not for resale.

BD, BD Logo and all other trademarks are the property of Becton, Dickinson and Company. ©2008 BD



Product Notices

1. This reagent has been pre-diluted for use at the recommended Volume per Test. We typically use 1×10^6 cells in a 100- μ l experimental sample (a test).
2. Please refer to www.bdbiosciences.com/pharming/en/protocols for technical protocols.
3. The Alexa Fluor®, Pacific Blue™, and Cascade Blue® dye antibody conjugates in this product are sold under license from Molecular Probes, Inc. for research use only, excluding use in combination with microarrays, or as analyte specific reagents. The Alexa Fluor® dyes (except for Alexa Fluor® 430), Pacific Blue™ dye, and Cascade Blue® dye are covered by pending and issued patents.
4. Alexa Fluor® 488 fluorochrome emission is collected at the same instrument settings as for fluorescein isothiocyanate (FITC).
5. For fluorochrome spectra and suitable instrument settings, please refer to our Fluorochrome Web Page at www.bdbiosciences.com/colors.
6. Source of all serum proteins is from USDA inspected abattoirs located in the United States.
7. Caution: Sodium azide yields highly toxic hydrazoic acid under acidic conditions. Dilute azide compounds in running water before discarding to avoid accumulation of potentially explosive deposits in plumbing.
8. Alexa Fluor is a registered trademark of Molecular Probes, Inc., Eugene, OR.

References

Clayberger C. and Krensky AM. Granulysin. *Curr Opin Immunol.* 2003; 15(5):560-5. (Biology)
Deng. A. et al.. Granulysin, a cytolytic molecule, is also a chemoattractant and proinflammatory activator. *J Immunol.* 2005; 174:5243-48. (Biology)
Ogawa, K. et al.. Granulysin in human serum as marker of cell mediated immunity. *Eur J Immunol.* 2003; 33:1925-33. (Biology)
Pena SV, Krensky AM. Granulysin, a new human cytolytic granule-associated protein with possible involvement in cell-mediated cytotoxicity. *Semin Immunol.* 1997; 9(2):117-125. (Biology)