

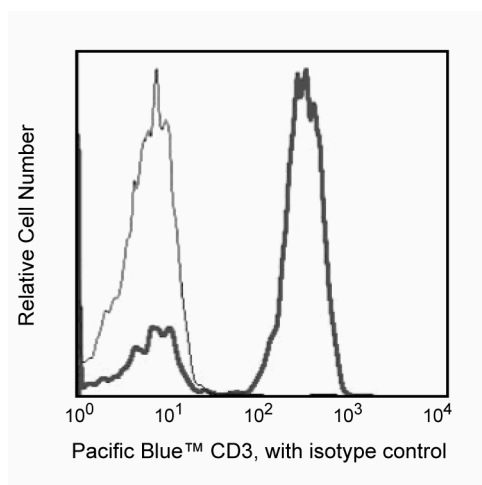
Technical Data Sheet

Pacific Blue™ Mouse Anti-Human CD3**Product Information**

Material Number:	558117
Size:	0.1 mg
Concentration:	0.2 mg/ml
Clone:	UCHT1
Isotype:	Mouse IgG1, κ
Reactivity:	QC Testing: Human
Workshop:	III 471
Storage Buffer:	Aqueous buffered solution containing $\leq 0.09\%$ sodium azide.

Description

Reacts with the human ϵ -chain, a 20-kDa subunit of CD3/T cell antigen receptor complex found on 70%-80% of normal human peripheral blood lymphocytes and 60%-85% of thymocytes. Studies from the HLDA Workshop show this antibody to be mitogenic when used in conjunction with pokeweed mitogen. CD3 plays a role in signal transduction during antigen recognition. UCHT1 antibody stains intracellular CD3 unlike the other CD3 clone, HIT3a, which stains only the extracellular CD3.



Profile of CD3 (UCHT1) reactivity on peripheral blood lymphocytes analyzed by flow cytometry.

Preparation and Storage

The monoclonal antibody was purified from tissue culture supernatant or ascites by affinity chromatography. The antibody is conjugated to Pacific Blue™ under optimum conditions, and unreacted Pacific Blue™ was removed. Store undiluted at 4° C and protected from prolonged exposure to light. Do not freeze.

Application Notes**Application**

Flow cytometry	Routinely Tested
----------------	------------------

Suggested Companion Products

Catalog Number	Name	Size	Clone
558120	Pacific Blue™ Mouse IgG1, κ Isotype Control	0.1 mg	MOPC-21

Product Notices

1. Since applications vary, each investigator should titrate the reagent to obtain optimal results.
2. Please refer to www.bdbiosciences.com/pharmingen/protocols for technical protocols.

BD Biosciences

www.bdbiosciences.com

United States	Canada	Europe	Japan	Asia Pacific	Latin America/Caribbean
877.232.8995	888.259.0187	32.53.720.550	0120.8555.90	65.6861.0633	55.11.5185.9995

For country-specific contact information, visit www.bdbiosciences.com/how_to_order/

Conditions: The information disclosed herein is not to be construed as a recommendation to use the above product in violation of any patents. BD Biosciences will not be held responsible for patent infringement or other violations that may occur with the use of our products. Purchase does not include or carry any right to resell or transfer this product either as a stand-alone product or as a component of another product. Any use of this product other than the permitted use without the express written authorization of Becton Dickinson and Company is strictly prohibited.

For Research Use Only. Not for use in diagnostic or therapeutic procedures. Not for resale.

BD, BD Logo and all other trademarks are the property of Becton, Dickinson and Company. ©2007 BD



3. For fluorochrome spectra and suitable instrument settings, please refer to our Fluorochrome Web Page at www.bdbiosciences.com/pharming/en/colors.
4. The Alexa Fluor®, Pacific Blue™, and Cascade Blue® dye antibody conjugates in this product are sold under license from Molecular Probes, Inc. for research use only, excluding use in combination with microarrays, or as analyte specific reagents. The Alexa Fluor® dyes (except for Alexa Fluor® 430), Pacific Blue™ dye, and Cascade Blue® dye are covered by pending and issued patents.
5. Pacific Blue™ has a maximum absorption of 416 nm and maximum emission of 451 nm. Before staining with this reagent, please confirm that your flow cytometer is capable of exciting the fluorochrome and discriminating the resulting fluorescence.
6. Caution: Sodium azide yields highly toxic hydrazoic acid under acidic conditions. Dilute azide compounds in running water before discarding to avoid accumulation of potentially explosive deposits in plumbing.

References

- Schlossman SF, Boumsell L, Gilks W, et al, ed. *Leukocyte Typing V: White Cell Differentiation Antigens*. New York: Oxford University Press; 1995.(Biology)
- McMichael AJ, Beverly PCL, Gilks W, et al, ed. *Leukocyte Typing III: White Cell Differentiation Antigens*. New York: Oxford University Press; 1987.(Clone-specific)
- Barclay NA, Brown MH, Birkeland ML, et al, ed. *The Leukocyte Antigen FactsBook*. San Diego, CA: Academic Press; 1997.(Biology)
- Schlossman S, Boumsell L, et al, ed. *Leucocyte Typing V*. New York: Oxford University Press; 1995.(Clone-specific)
- Knapp W, Dorken B, Rieber EP, et al, ed. *Leucocyte Typing IV*. New York: Oxford University Press; 1989.(Clone-specific)
- Beverley PC, Callard RE. Distinctive functional characteristics of human "T" lymphocytes defined by E rosetting or a monoclonal anti-T cell antibody. *Eur J Immunol*. 1981; 11(4):329-334.(Biology)
- Lanier LL, Allison JP, Phillips JH. Correlation of cell surface antigen expression on human thymocytes by multi-color flow cytometric analysis: implications for differentiation. *J Immunol*. 1986; 137(8):2501-2507.(Biology)