

## Technical Data Sheet

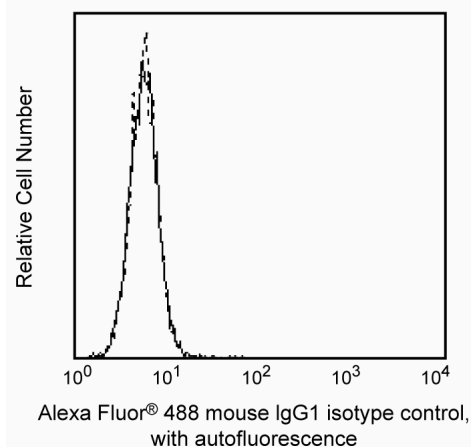
## Alexa Fluor® 488 Mouse IgG1 κ Isotype Control

## Product Information

Material Number:	557782
Size:	50 Tests
Vol. per Test:	20 µl
Clone:	MOPC-21
Isotype:	Mouse IgG1, κ
Reactivity:	QC Testing: Human
Storage Buffer:	Aqueous buffered solution containing BSA and ≤0.09% sodium azide.

## Description

The MOPC-21 immunoglobulin is a mouse myeloma protein. The MOPC-21 immunoglobulin was selected as an isotype control following screening for low background on a variety of mouse and human tissues.



**Flow cytometric analysis on U-937 cells.** U-937 cells (ATCC CRL-1593) were serum starved overnight (RPMI containing 0.1% FCS). The following day cells were either left untreated (solid line) or treated (dotted line) with recombinant human IFN-γ (Cat. No. 554617; 1000 U/ml for 10 minutes at 37°C). Cells were then fixed in 2% paraformaldehyde (10 minutes at 37°C) and permeabilized by adding 90% methanol to the cell pellet (30 minutes on ice or overnight at -20°C). Cells were washed twice in BD Pharmingen™ Stain Buffer and stained with the Alexa Fluor® 488 Mouse IgG1, κ Isotype Control antibody (1 hour at RT; Cat. No. 557782). The cells were analyzed on a BD FACSCalibur™ flow cytometry system.

## Preparation and Storage

Store undiluted at 4°C and protected from prolonged exposure to light. Do not freeze.

The monoclonal antibody was purified from tissue culture supernatant or ascites by affinity chromatography.

The antibody was conjugated to Alexa Fluor® 488 under optimum conditions, and unreacted Alexa Fluor® 488 was removed.

## Application Notes

## Application

Intracellular staining (flow cytometry)	Routinely Tested
Isotype control	Routinely Tested

## Suggested Companion Products

Catalog Number	Name	Size	Clone
554656	Stain Buffer (FBS)	500 mL	(none)
558050	Perm Buffer III	125 mL	(none)
554655	Fixation Buffer	100 mL	(none)
554617	Recombinant Human IFN-γ	50 µg	(none)

## Product Notices

- Please refer to [www.bdbiosciences.com/pharmingen/protocols](http://www.bdbiosciences.com/pharmingen/protocols) for technical protocols.
- This reagent has been pre-diluted for use at the recommended Volume per Test. We typically use  $1 \times 10^6$  cells in a 100-µl experimental sample (a test).
- Alexa Fluor® 488 fluorochrome emission is collected at the same instrument settings as for fluorescein isothiocyanate (FITC).
- The Alexa Fluor®, Pacific Blue™, and Cascade Blue® dye antibody conjugates in this product are sold under license from Molecular Probes, Inc. for research use only, excluding use in combination with microarrays, or as analyte specific reagents. The Alexa Fluor® dyes (except for Alexa Fluor® 430), Pacific Blue™ dye, and Cascade Blue® dye are covered by pending and issued patents.

## BD Biosciences

[bdbiosciences.com](http://bdbiosciences.com)

United States	Canada	Europe	Japan	Asia Pacific	Latin America/Caribbean
877.232.8995	800.268.5430	32.2.400.98.95	0120.8555.90	65.6861.0633	55.11.5185.9995

For country contact information, visit [bdbiosciences.com/contact](http://bdbiosciences.com/contact)

Conditions: The information disclosed herein is not to be construed as a recommendation to use the above product in violation of any patents. BD Biosciences will not be held responsible for patent infringement or other violations that may occur with the use of our products. Purchase does not include or carry any right to resell or transfer this product either as a stand-alone product or as a component of another product. Any use of this product other than the permitted use without the express written authorization of Becton, Dickinson and Company is strictly prohibited.

For Research Use Only. Not for use in diagnostic or therapeutic procedures. Not for resale.

Unless otherwise noted, BD, BD Logo and all other trademarks are property of Becton, Dickinson and Company. © 2014 BD



5. Alexa Fluor® is a registered trademark of Molecular Probes, Inc., Eugene, OR.
6. Source of all serum proteins is from USDA inspected abattoirs located in the United States.
7. Caution: Sodium azide yields highly toxic hydrazoic acid under acidic conditions. Dilute azide compounds in running water before discarding to avoid accumulation of potentially explosive deposits in plumbing.
8. For fluorochrome spectra and suitable instrument settings, please refer to our Multicolor Flow Cytometry web page at [www.bdbiosciences.com/colors](http://www.bdbiosciences.com/colors).
9. An isotype control should be used at the same concentration as the antibody of interest.

## BD Biosciences

[bdbiosciences.com](http://bdbiosciences.com)

<b>United States</b>	<b>Canada</b>	<b>Europe</b>	<b>Japan</b>	<b>Asia Pacific</b>	<b>Latin America/Caribbean</b>
877.232.8995	800.268.5430	32.2.400.98.95	0120.8555.90	65.6861.0633	55.11.5185.9995

For country contact information, visit [bdbiosciences.com/contact](http://bdbiosciences.com/contact)

*Conditions: The information disclosed herein is not to be construed as a recommendation to use the above product in violation of any patents. BD Biosciences will not be held responsible for patent infringement or other violations that may occur with the use of our products. Purchase does not include or carry any right to resell or transfer this product either as a stand-alone product or as a component of another product. Any use of this product other than the permitted use without the express written authorization of Becton, Dickinson and Company is strictly prohibited.*

For Research Use Only. Not for use in diagnostic or therapeutic procedures. Not for resale.

Unless otherwise noted, BD, BD Logo and all other trademarks are property of Becton, Dickinson and Company. © 2014 BD

