

Technical Data Sheet

PE Mouse Anti-Human CD21

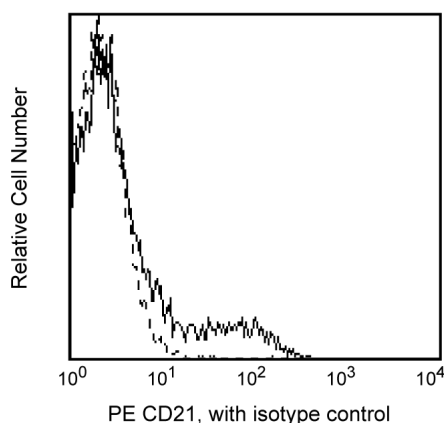
Product Information

Material Number:	557327
Alternate Name:	CR2; Complement receptor type 2; C3DR; EBV-R; Epstein-Barr virus receptor
Size:	50 tests
Vol. per Test:	20 µl
Clone:	B-ly4
Isotype:	Mouse IgG1, κ
Reactivity:	Human
	QC Testing: Baboon or Rhesus or Cynomolgus
	Tested in Development: Pig
Workshop:	IV B98
Storage Buffer:	Aqueous buffered solution containing BSA and ≤0.09% sodium azide.

Description

The B-ly4 monoclonal antibody specifically binds to CD21, a 145 kDa glycosylated type I integral membrane protein. CD21 is a receptor for the C3d complement fragment and for Epstein-Barr virus (EBV), expressed on mature B cells, follicular dendritic cells, and some epithelial cells. It is also weakly expressed on the subset of mature T cells and thymocytes. CD21 plays a role in B-cell activation and proliferation. It may also play a role in modulating the function of T cells in the immune response to infections by lymphotropic viruses. Recently, CD21 was found to be part of a large complex containing CD19, CD81, and possibly other molecules.

This clone also cross-reacts with a major subset of, but not all, peripheral blood CD20+ lymphocytes of baboon, and both rhesus and cynomolgus macaque monkeys. A subset of CD3+ cells is also CD21+.



Profile of anti-CD21 reactivity on peripheral blood lymphocytes of Baboon (Papio anubis) analyzed by flow cytometry.

Preparation and Storage

The monoclonal antibody was purified from tissue culture supernatant or ascites by affinity chromatography.

The antibody was conjugated with R-PE under optimum conditions, and unconjugated antibody and free PE were removed.

Store undiluted at 4°C and protected from prolonged exposure to light. Do not freeze.

Application Notes

Application

Flow cytometry

Routinely Tested

Suggested Companion Products

Catalog Number	Name	Size	Clone
556650	PE Mouse IgG1, κ Isotype Control	50 tests	MOPC-21

BD Biosciences

bdbiosciences.com

United States	Canada	Europe	Japan	Asia Pacific	Latin America/Caribbean
877.232.8995	888.268.5430	32.53.720.550	0120.8555.90	65.6861.0633	0800.771.7157

For country-specific contact information, visit bdbiosciences.com/how_to_order/

Conditions: The information disclosed herein is not to be construed as a recommendation to use the above product in violation of any patents. BD Biosciences will not be held responsible for patent infringement or other violations that may occur with the use of our products. Purchase does not include or carry any right to resell or transfer this product either as a stand-alone product or as a component of another product. Any use of this product other than the permitted use without the express written authorization of Becton Dickinson and Company is strictly prohibited.

For Research Use Only. Not for use in diagnostic or therapeutic procedures. Not for resale.

BD, BD Logo and all other trademarks are the property of Becton, Dickinson and Company. ©2011 BD



Product Notices

1. This reagent has been pre-diluted for use at the recommended Volume per Test. We typically use 1×10^6 cells in a 100- μ l experimental sample (a test).
2. Since applications vary, each investigator should titrate the reagent to obtain optimal results.
3. Please refer to www.bdbiosciences.com/pharming/en/protocols for technical protocols.
4. For fluorochrome spectra and suitable instrument settings, please refer to our Fluorochrome Web Page at www.bdbiosciences.com/colors.
5. Caution: Sodium azide yields highly toxic hydrazoic acid under acidic conditions. Dilute azide compounds in running water before discarding to avoid accumulation of potentially explosive deposits in plumbing.
6. Source of all serum proteins is from USDA inspected abattoirs located in the United States.

References

Knapp W, Dorken B, Rieber EP, et al, ed. *Leucocyte Typing IV*. New York: Oxford University Press; 1989:1-1208. (Clone-specific)

Reimann KA, Waite BC, Lee-Parritz DE, et al. Use of human leukocyte-specific monoclonal antibodies for clinically immunophenotyping lymphocytes of rhesus monkeys. *Cytometry*. 1994; 17(1):102-108. (Biology)

Sopper S, Stahl-Hennig C, Demuth M, Johnston IC, Dorries R, ter Meulen V. Lymphocyte subsets and expression of differentiation markers in blood and lymphoid organs of rhesus monkeys. *Cytometry*. 1997; 29(4):351-362. (Biology)